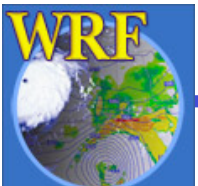


Advanced Features of the WRF Preprocessing System

Michael Duda



Winter 2009 WRF Users' Tutorial

Outline

- The GEOGRID.TBL file
 - What is the GEOGRID.TBL file?
 - Ingesting new static fields
 - Examples: Using high-resolution land use and topography data
- The METGRID.TBL file
 - What is the METGRID.TBL file?
 - Example: Defining interpolation options for a new field
 - Example: Using the METGRID.TBL file for a real-time system



The GEOGRID.TBL File

- GEOGRID.TBL is the file that determines which fields are interpolated by geogrid *at runtime*
 - Each entry in GEOGRID.TBL corresponds to one data source
 - When new data sources are involved, or when the default treatment of fields is inadequate, user may want/need to edit GEOGRID.TBL
 - However, default GEOGRID.TBL is sufficient to initialize a WRF simulation

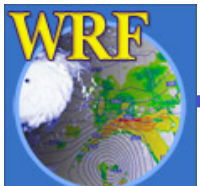


The GEOGRID.TBL File

- Format of GEOGRID.TBL file is simple text, with specifications of the form *keyword=value*
- Example entry for a 30" landuse data set:

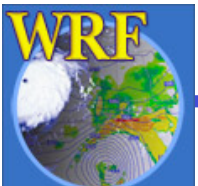
```
=====
name=LANDUSEF      # Houston, TX urban data
  priority          = 1
  dest_type         = categorical
  z_dim_name        = land_cat
  interp_option     = 30s:nearest_neighbor
  abs_path          = 30s:/users/duda/Houston/
=====
```

For a complete list of possible keywords See p. 3-37



The GEOGRID.TBL File

- Using the GEOGRID.TBL, we can
 - Change the method(s) used to interpolate a field
 - Apply smoothing filters to continuous fields
 - Derive fields from others
 - E.g., dominant category or slope fields
 - Add new data for geogrid to interpolate



New Fields in GEOGRID.TBL

There are three basic types of new data to be added through the GEOGRID.TBL file:

1) Completely new fields

- fields that were previously not processed by geogrid

2) Different resolution data sets for an existing field

- Such sources *do not need to be supplemented* by existing data
- E.g., Adding a 90-meter resolution topography data set

3) Alternative sources for a field that *must be used in addition to an existing source*

- E.g., A new soil category data set exists, but covers only part of South Korea



1) Completely new fields

Completely new fields:

*For a new field, simply add an entry in
GEOGRID.TBL for that field.*

```
=====
name = MY_NEW_FIELD_NAME
priority = 1
dest_type = continuous
interp_option = four_pt
abs_path = /data/duda/mydata/
=====
```

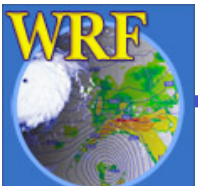
Name of field that this entry
is for

Priority of this data source
compared with other sources
for same field

How to interpolate
this field

Where on disk to find the
data for this field

See p. 3-37



2) Different resolution data set

Different resolution data sets for an existing field:

Specify the path to the new data set and which interpolation methods should be used for the new resolution in the existing entry for that field.

```
=====
name = HGT_M
priority = 1
dest_type = continuous
smooth_option = smth-desmth
interp_option = 30s:special(4.0)+four_pt
interp_option = my_res:four_pt
interp_option = default:four_pt
rel_path= 30s:topo_30s/
rel_path= my_res:new_topo_directory/
rel_path= default:topo_2m/
=====
```



3) Alternative data sources

Alternative sources for a field that must be used in addition to an existing source :

Add a new entry for the field that has the same name as the field's existing entry, but make priority of new entry higher.

```
=====
name = HGT_M
    priority = 2
    dest_type = continuous
    interp_option = default:four_pt
    rel_path      = default:some_path/
```

```
=====
name = HGT_M
    priority = 1
    dest_type = continuous
    interp_option = default:four_pt
    rel_path      = default:topo_2m/
```

```
=====
```



Preparing new geogrid data sets

To add a new data source, we need to

1) Write the data in the proper binary format

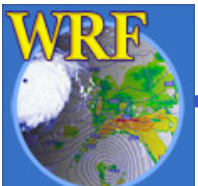
- See Chapter 3: “Writing Static Data to the Geogrid Binary Format”
- Can make use of [read_geogrid.c](#) and [write_geogrid.c](#)

2) Create an “index” metadata file for the data set

- This tells geogrid about the projection, coverage, resolution, type, a storage representation of the data set

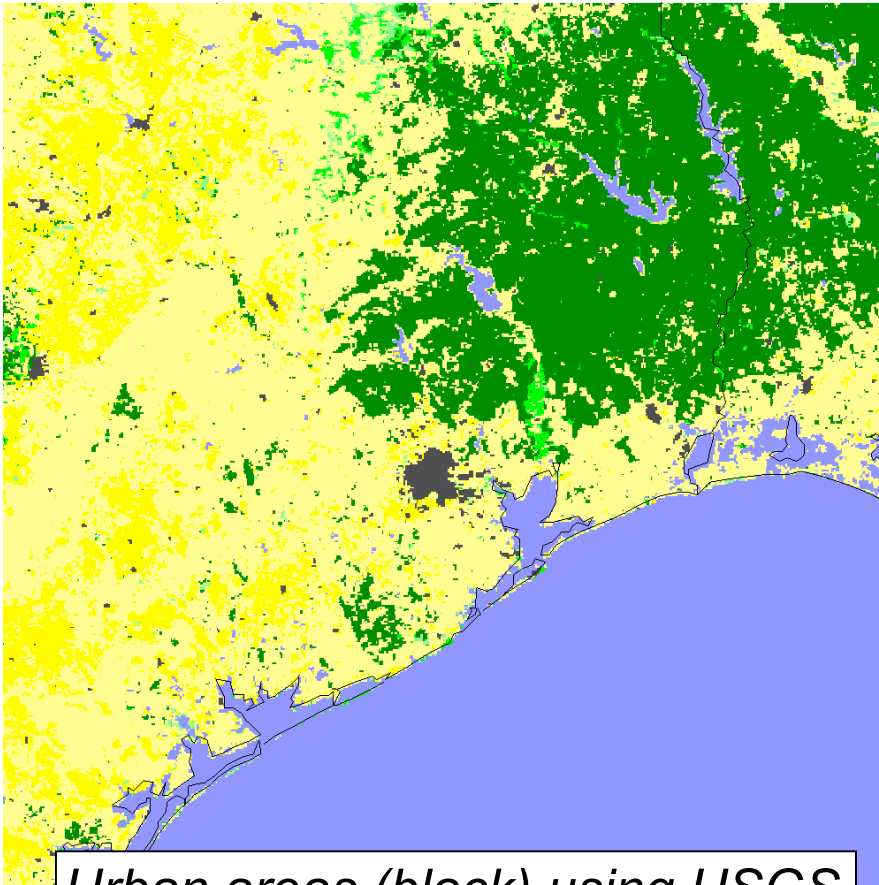
3) Add/edit entry for the data in the GEOGRID.TBL file

- The change to GEOGRID.TBL will follow one of the three cases mentioned before

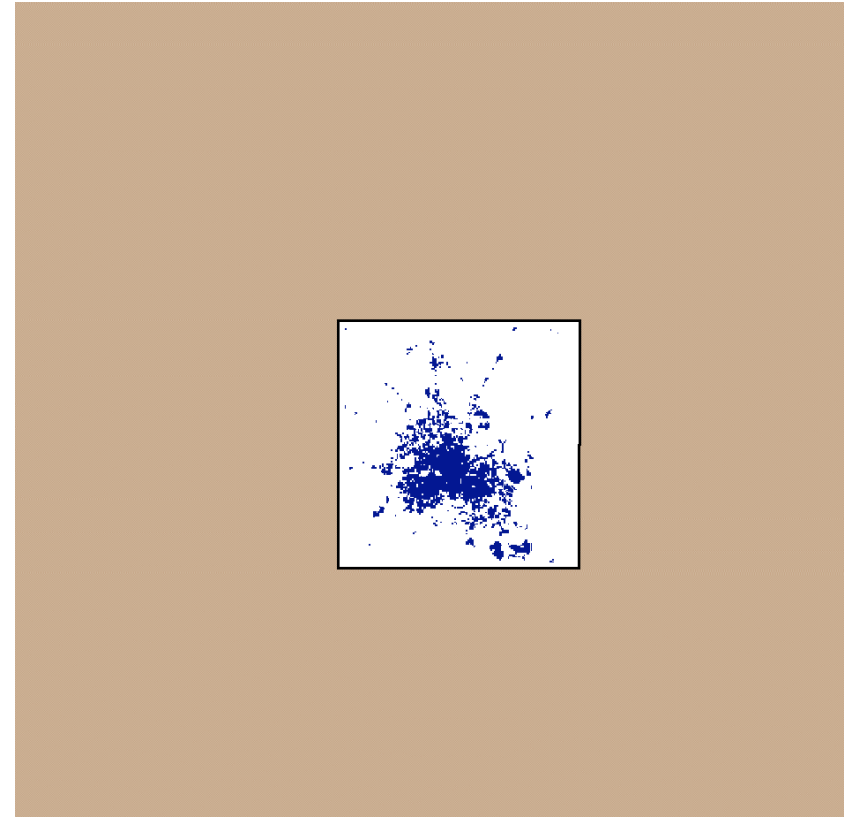


Example: Houston LU Data Set

- Given dataset for new Houston urban land use categories
 - Regular lat/lon projection, 30" resolution; categories 31, 32 & 33



*Urban areas (black) using USGS
24-category data set*



*Area of Houston data tile in relation
to model domain – white=missing
data and blue=valid data*



Example: Houston LU Data Set

To make use of the new data, we do the following:

- 1) Write the data to the binary format used by geogrid
- 2) Create an index file for the data

```
type=categorical
category_min=31; category_max=33
projection=regular_ll
dx=0.00833333; dy=0.00833333
known_x=1.0; known_y=1.0
known_lat=29.3375
known_lon=-95.9958333
wordsize=1
tile_x=157; tile_y=143; tile_z=1
missing_value = 0.
units="category"
description="3-category urban LU"
```

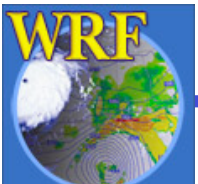
← Data set has categories 31 through 33

← 30 arc second resolution

← Geographic location of data set

← Treat 0 as "no data"

See p. 3-40



Example: Houston LU Data Set

3) Define an entry for the data in GEOGRID.TBL

```
=====
```

```
name=LANDUSEF
```

```
    priority    = 2
```

```
    dest_type   = categorical
```

```
    z_dim_name  = land_cat
```

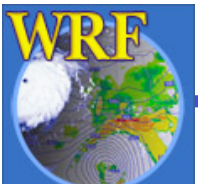
```
    interp_option = default:nearest_neighbor
```

```
    abs_path    = default:/users/duda/Houston/
```

```
=====
```

Give this data source priority
over default data sources

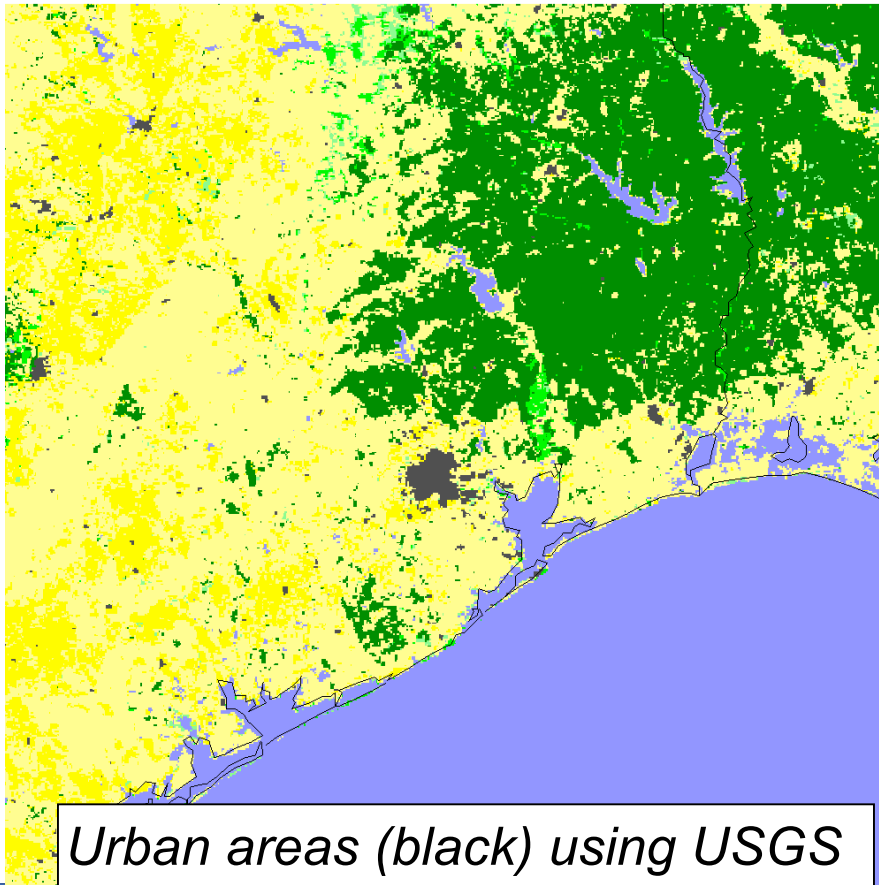
How to interpolate this data source, and
where to find it on disk



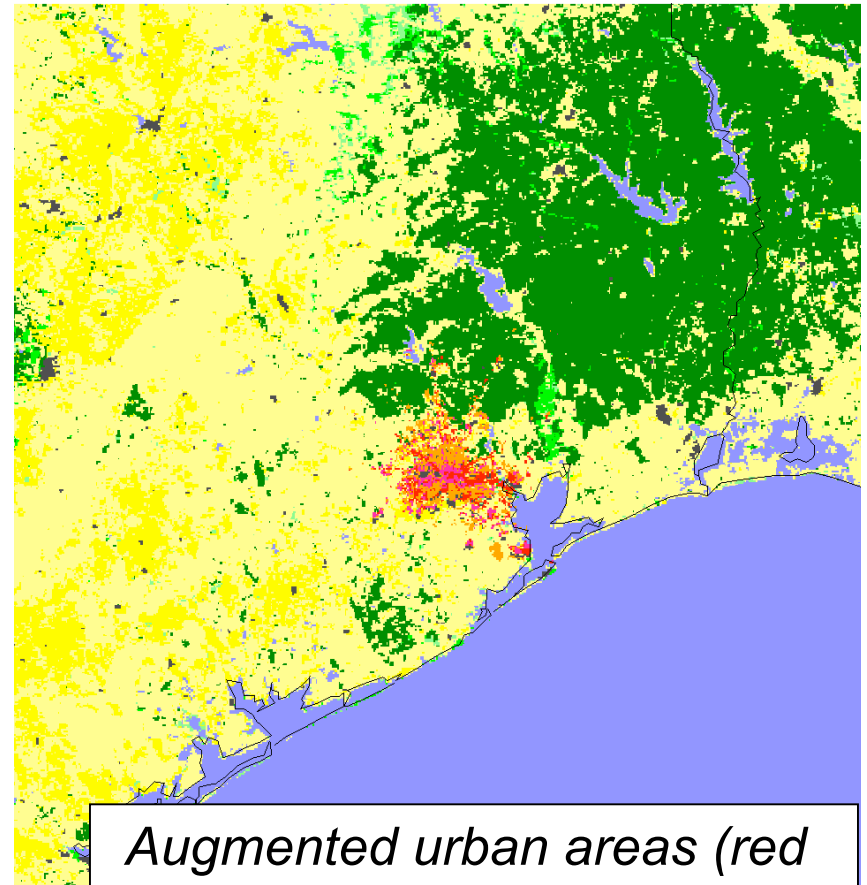
Example: Houston LU Data Set

4) Run geogrid.exe

Any gridpoints covered by Houston data will use it; otherwise default USGS data will be used



*Urban areas (black) using USGS
24-category data set*

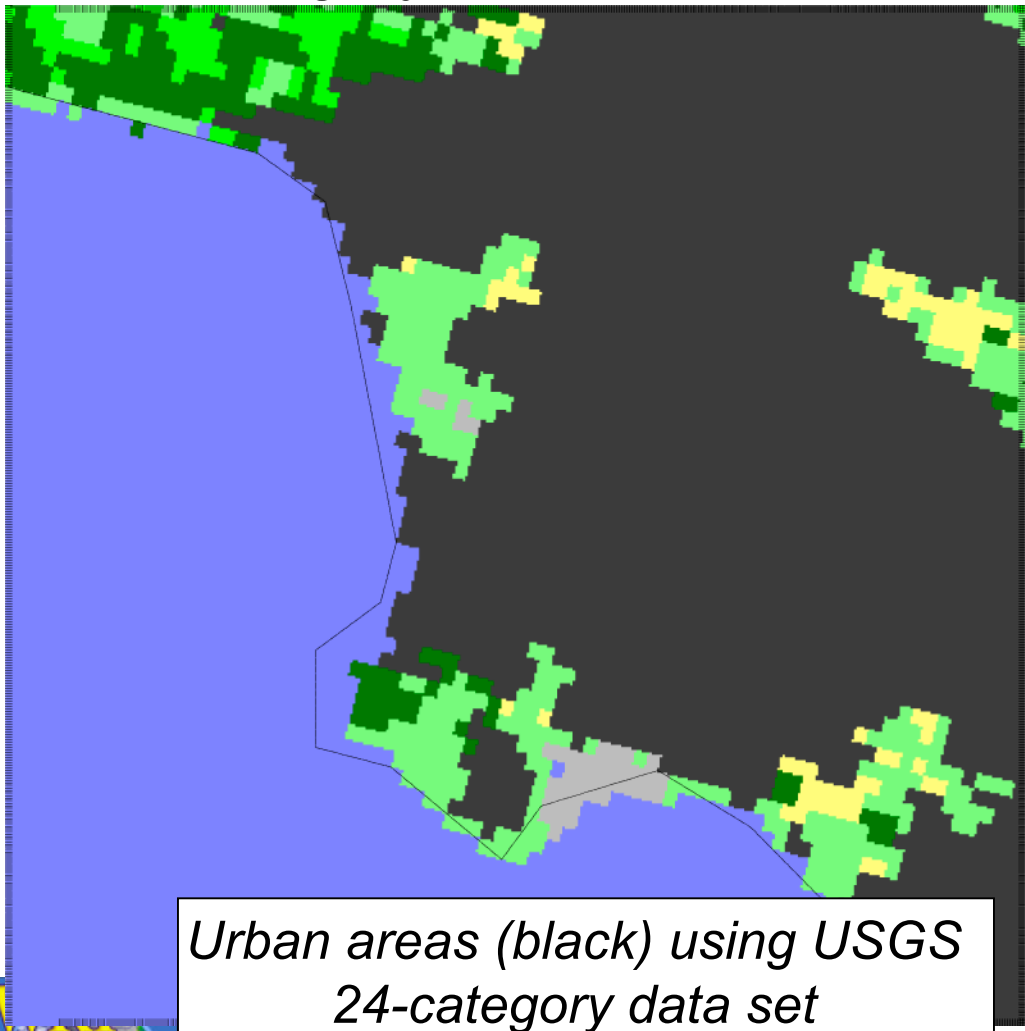


*Augmented urban areas (red
shades) using new LU data set*

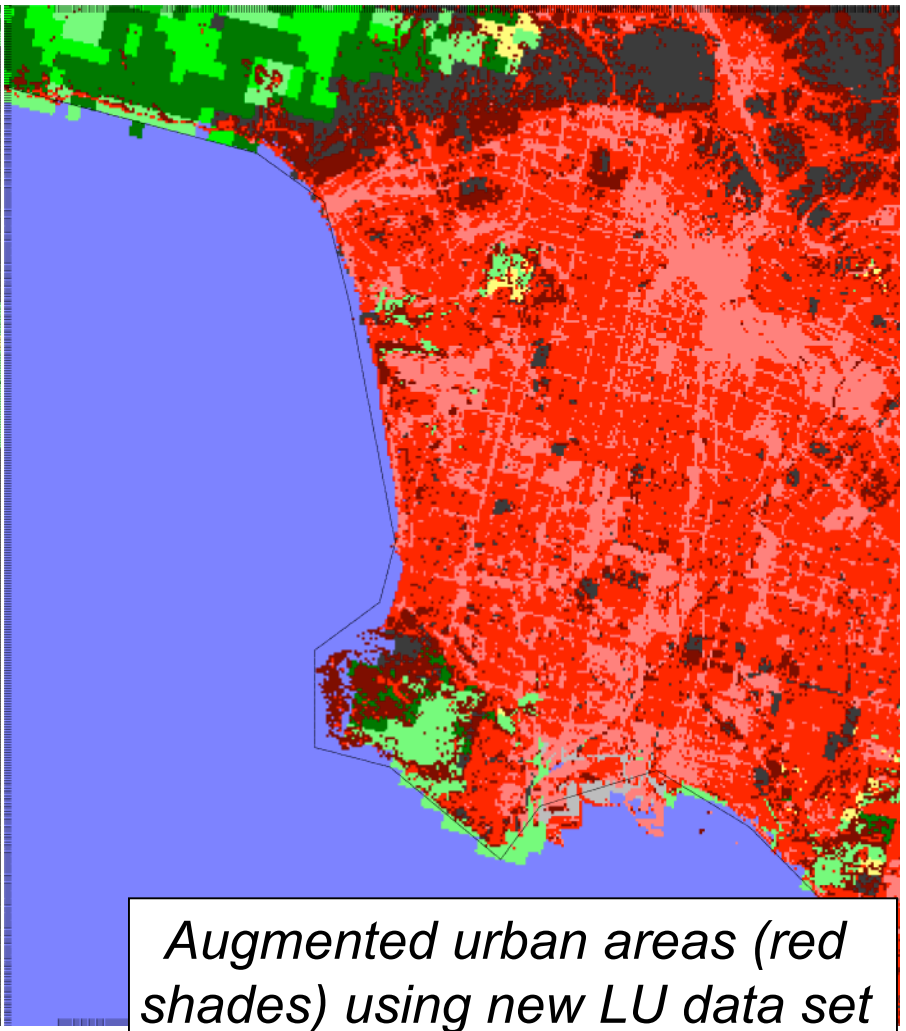


Another Example: Los Angeles

For Los Angeles, we have a 30-meter resolution, 3 urban land use category data set



*Urban areas (black) using USGS
24-category data set*



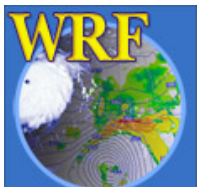
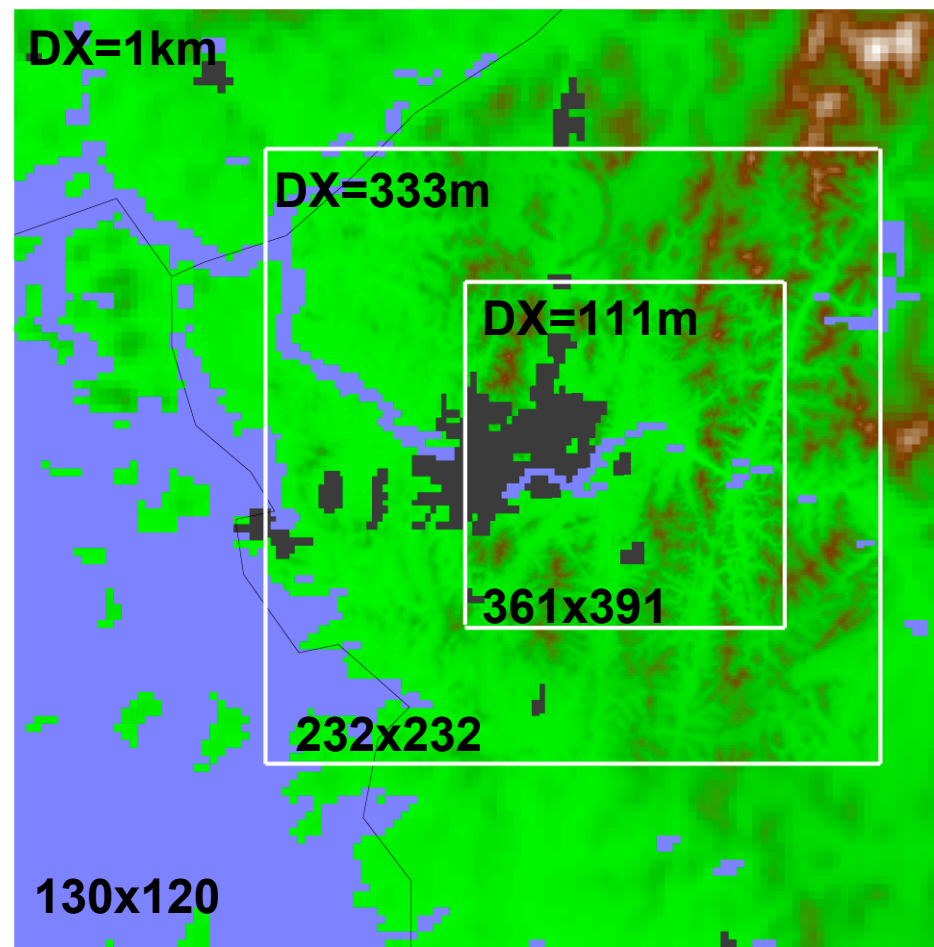
*Augmented urban areas (red
shades) using new LU data set*

Example: South Korea

Shuttle Radar Topography Mission (SRTM) 3 arc second topography data

We would like to use the SRTM data, especially for domains 2 and 3.

Follow steps for adding a new resolution for an existing data set (case 2)



Example: Seoul

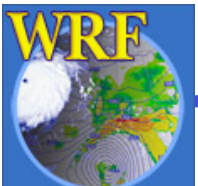
To use the SRTM topography data, we

- 1) Write data to geogrid binary format
- 2) Create an index file for the data set
- 3) Modify the GEOGRID.TBL entries for HGT_M, HGT_U, and HGT_V

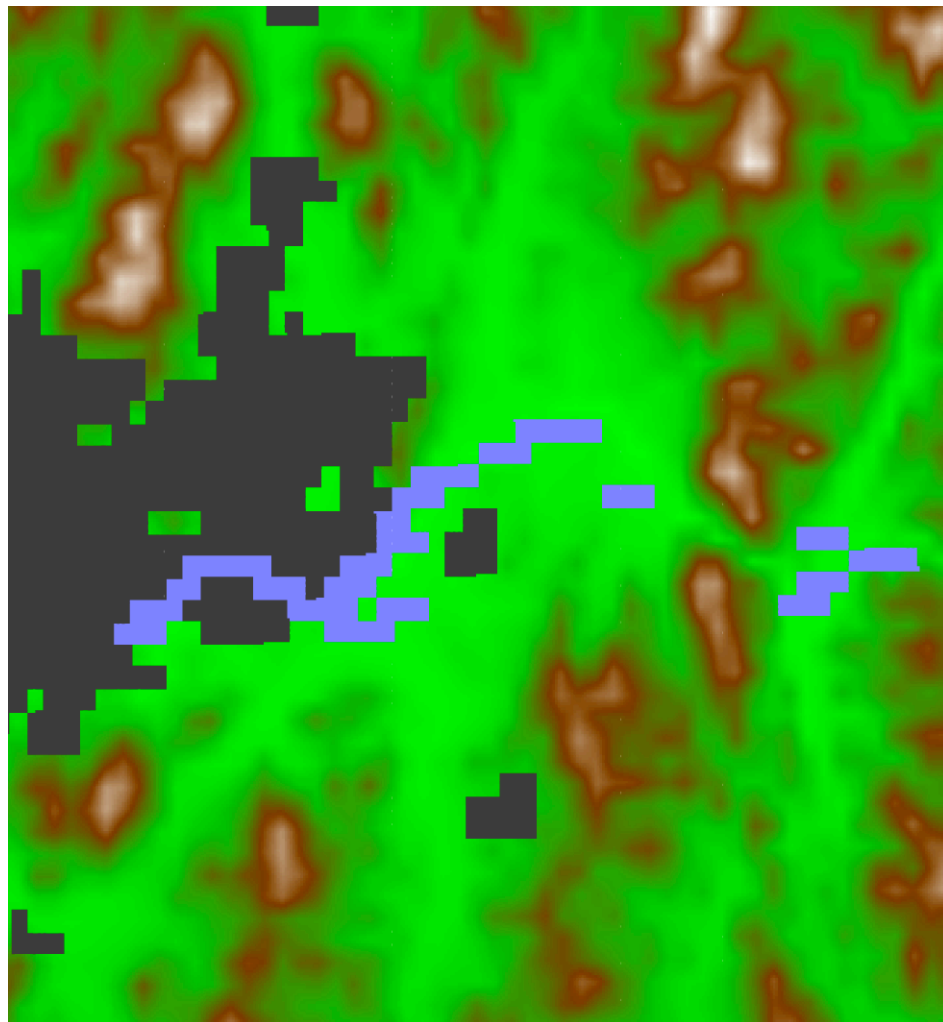
```
=====
name = HGT_M
  priority = 1
  dest_type = continuous
  interp_option = 30s:special(4.0)+four_pt
  interp_option = SRTM:four_pt
  rel_path = 30s:topo_30s/
  rel_path = SRTM:SRTM/
=====
```

- 4) Specify that we should interpolate from SRTM in namelist by setting

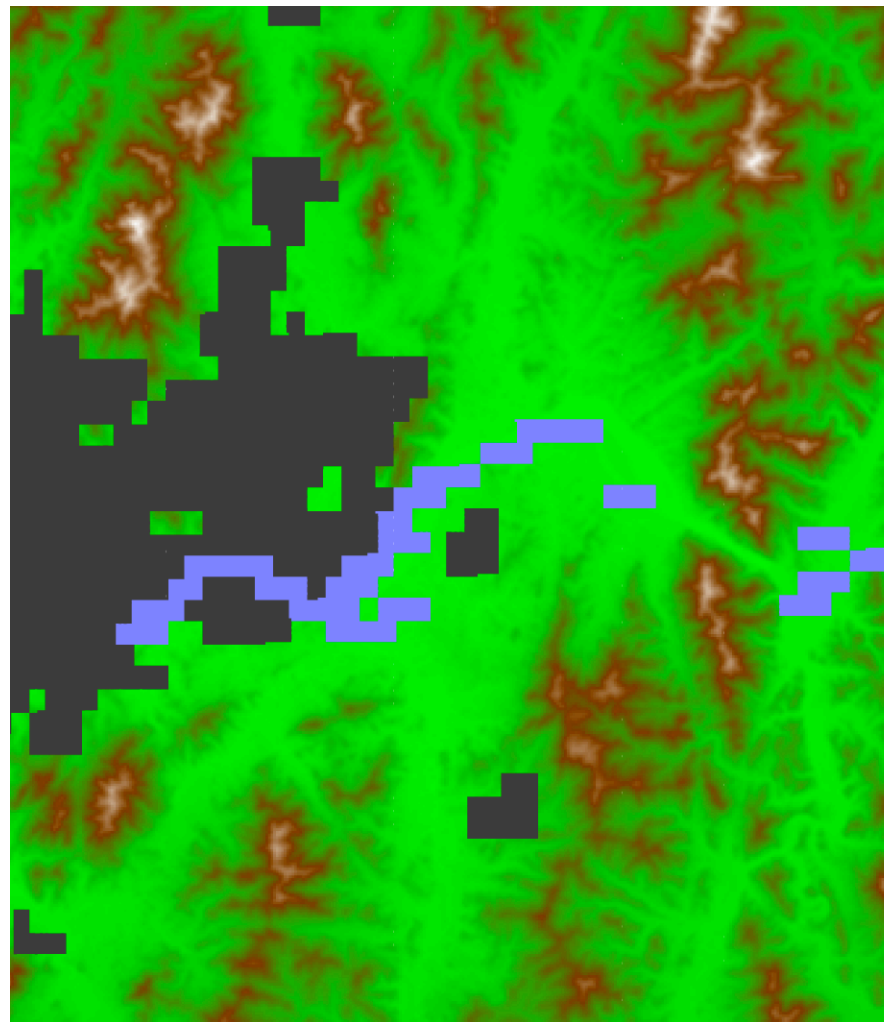
```
geog_data_res = '30s', 'SRTM+30s', 'SRTM+30s'
```



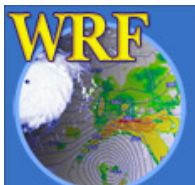
Example: Seoul



Domain 3 (DX=111m) using default
30" USGS topography

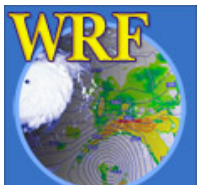


Domain 3 (DX=111m) using 3"
SRTM topography



Outline

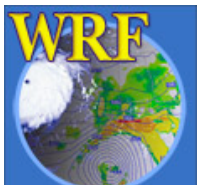
- The GEOGRID.TBL file
 - What is the GEOGRID.TBL file?
 - Ingesting new static fields
 - Example: Houston urban data
- The METGRID.TBL file
 - What is the METGRID.TBL file?
 - Example: Building a METGRID.TBL entry for a new field
 - Example: Using the METGRID.TBL file for real-time runs



The METGRID.TBL File

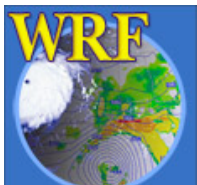
The METGRID.TBL file controls how meteorological fields are interpolated

- Unlike GEOGRID.TBL, METGRID.TBL *does not determine which fields will be processed, only how to process them* if they are encountered
- Every field in intermediate files will be interpolated
 - If no entry in METGRID.TBL for a field, a default interpolation scheme (nearest neighbor) will be used
 - It is possible to specify in METGRID.TBL that a field should be discarded



The METGRID.TBL File

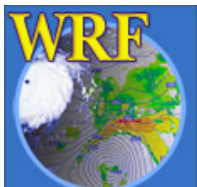
- Suitable entries in METGRID.TBL are provided for common fields
 - *Thus, many users will rarely need to edit METGRID.TBL*
- When necessary, different interpolation methods (and other options) can be set in METGRID.TBL
 - Interpolation options can depend on the source of a field



The METGRID.TBL File

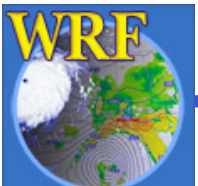
- Example METGRID.TBL entry (for “soil moisture 0-10 cm”)

```
=====
name=SM000010
interp_option=sixteen_pt+four_pt+average_4pt
masked=water
interp_mask=LANDSEA(0)
fill_missing=1.
flag_in_output=FLAG_SM000010
=====
```



Example: A new METGRID.TBL entry

- Suppose we have a 1000x1000 domain over Houston (dx=500 m)
 - This is the same domain as in the urban land use example
- Meteorological data come from 1-degree GFS
 - *Note that we will be interpolating 1-degree data onto a 500-grid!*
- We want to create an entry for a new soil moisture file SM000010

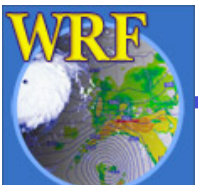
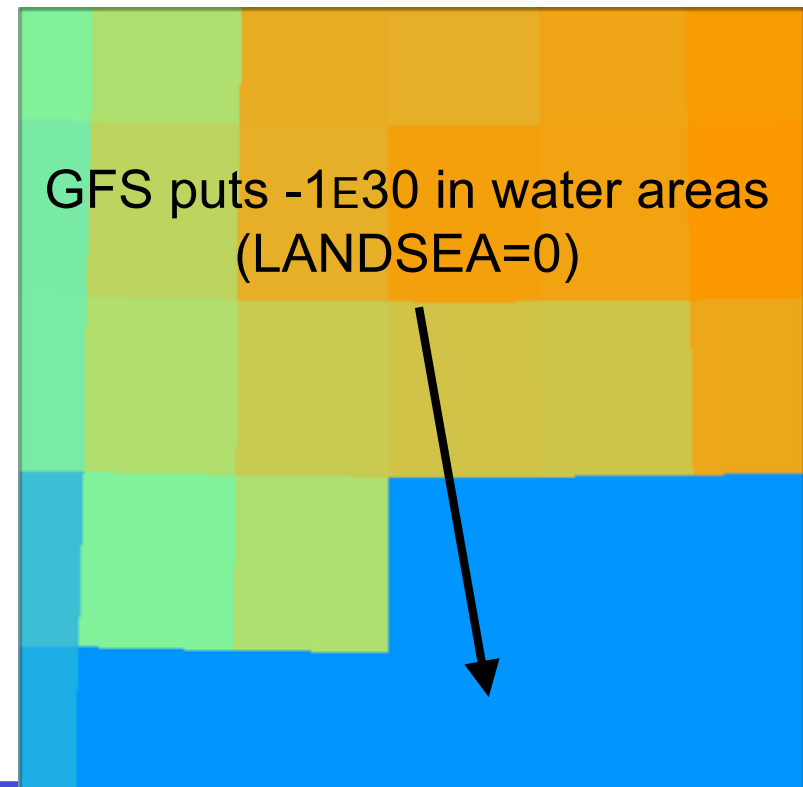


Example: A new METGRID.TBL entry

- Initially, we run metgrid.exe and get the message:

```
INFORM: Entry in METGRID.TBL not found for field SM000010  
Default options will be used for this field!
```

- The resulting SM000010 field looks very coarse
- We need to create a METGRID.TBL entry so metgrid will know how to interpolate this field!



Example: A new METGRID.TBL entry

- We add an initial entry in METGRID.TBL for SM000010:

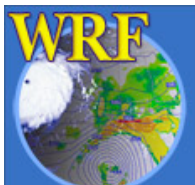
```
=====
name = SM000010
masked = water
interp_mask = LANDSEA(0)
interp_option = sixteen_pt + nearest_neighbor
fill_missing = 0.
=====
```

Specify that the field should *not* be interpolated to model water points

Specify that metgrid should not use points in source where LANDSEA equals 0

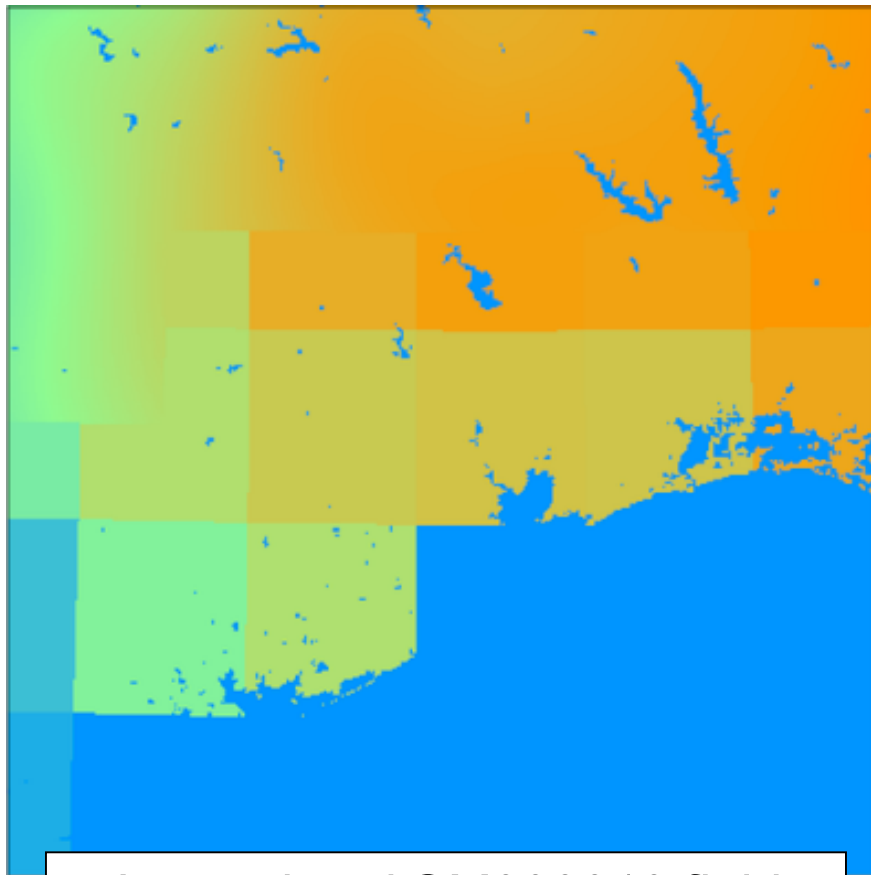
Fill model points that don't receive an interpolated value (like water) to 0

For a complete list of possible keywords See p. 3-42

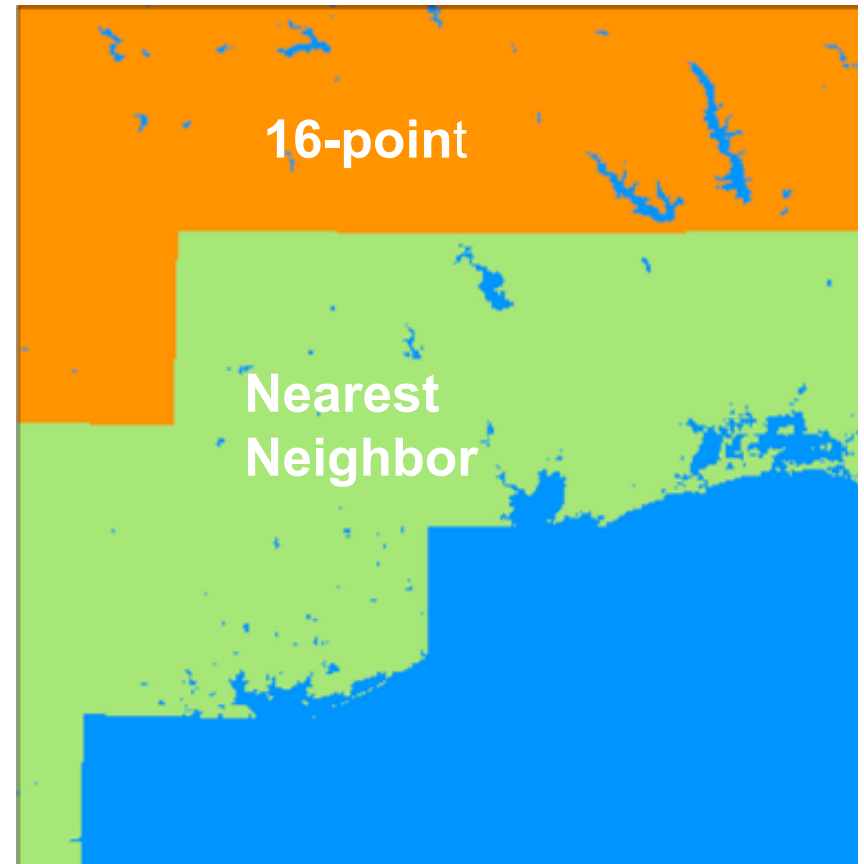


Example: A new METGRID.TBL entry

- Now, after running metgrid.exe again, the SM000010 field looks like



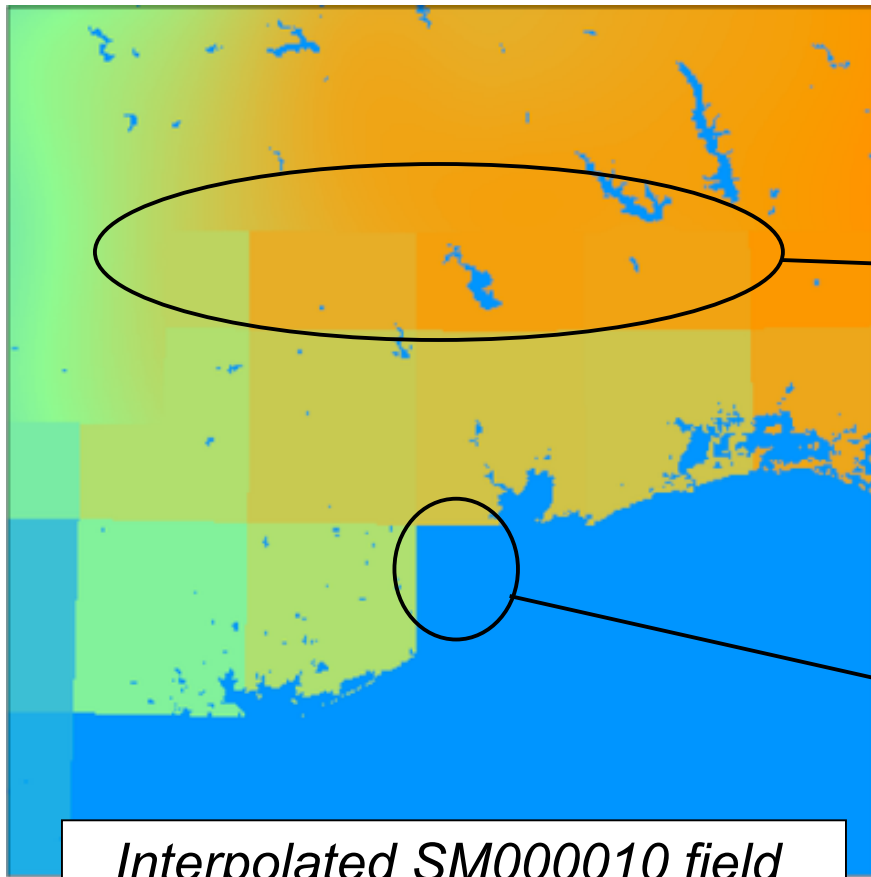
*Interpolated SM000010 field
(sixteen_pt + nearest_neighbor)*



*Which interpolator was used at each
model grid point*

Example: A new METGRID.TBL entry

- But, the interpolated field still looks bad near the coastline



Should be sufficient data to use 4-point interpolation in these areas

Model grid points here should be adjacent to at least one valid GFS point (though not nearest)

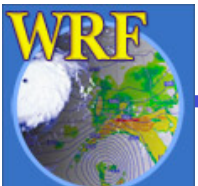
*Interpolated SM000010 field
(sixteen_pt + nearest_neighbor)*

Example: A new METGRID.TBL entry

- Update the METGRID.TBL entry for SM000010

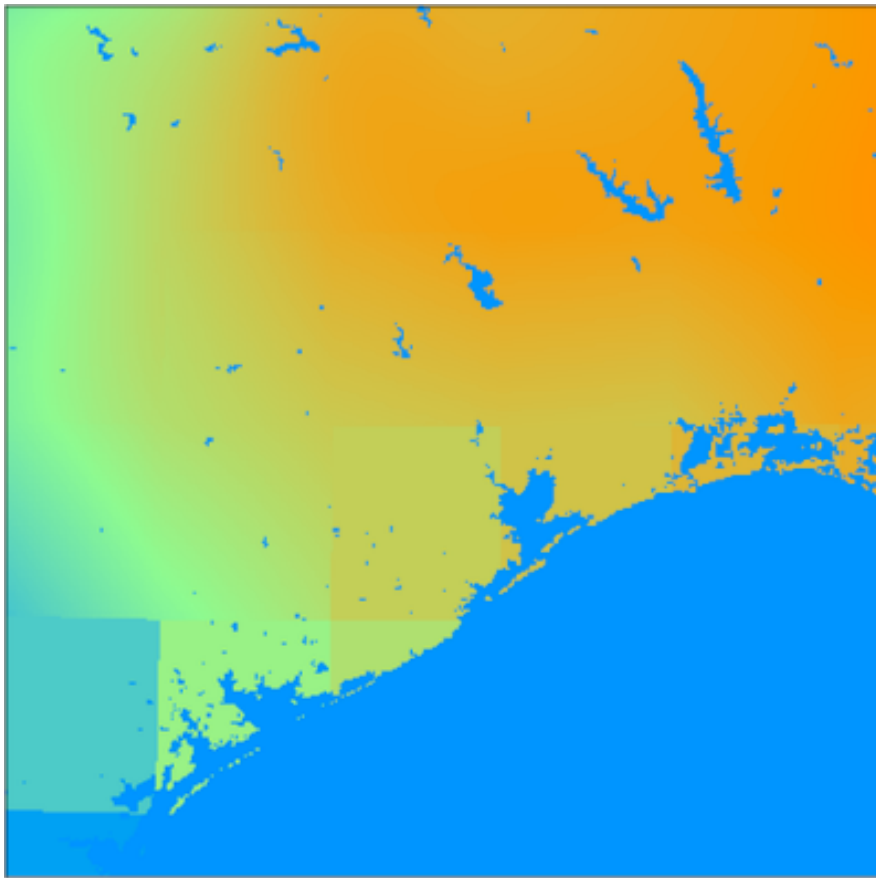
```
=====
name = SM000010
masked = water
interp_mask = LANDSEA(0)
interp_option = sixteen_pt + four_pt + average_4pt
fill_missing = 0.
=====
```

- If 16-pt doesn't work, then try 4-pt before reverting to a 4-point average
 - Note that 4-point average will work anywhere nearest_neighbor would (missing/masked values not counted in the average)

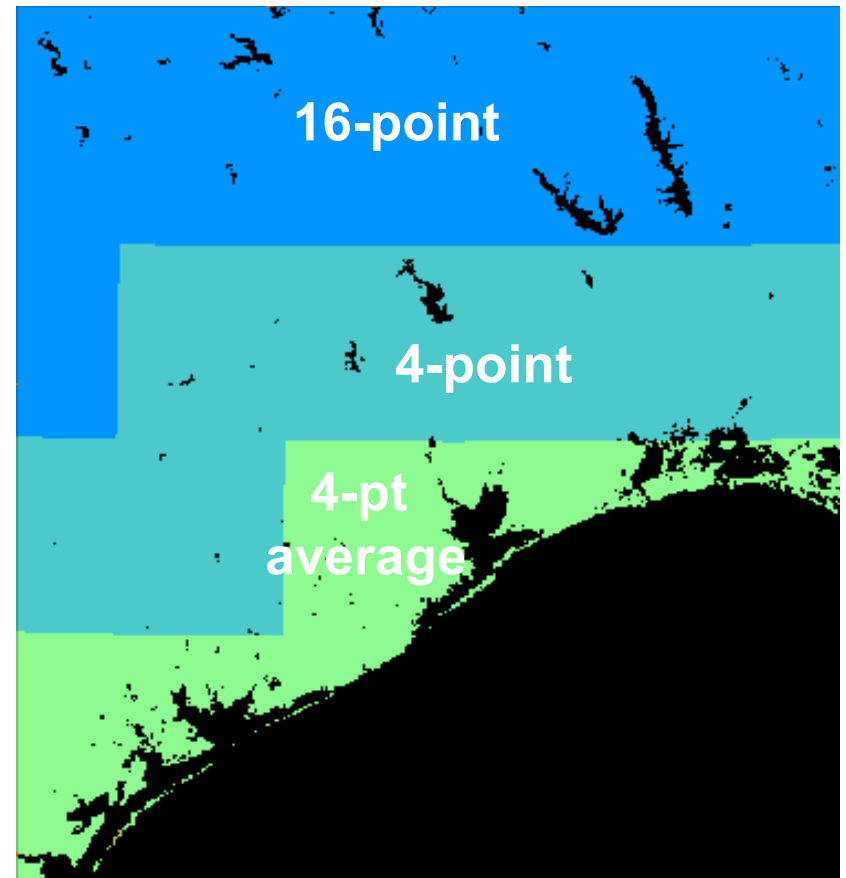


Example: A new METGRID.TBL entry

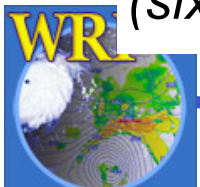
- The resulting field, below-left:



*Interpolated SM000010 field
(sixteen_pt + four_pt + average_4pt)*

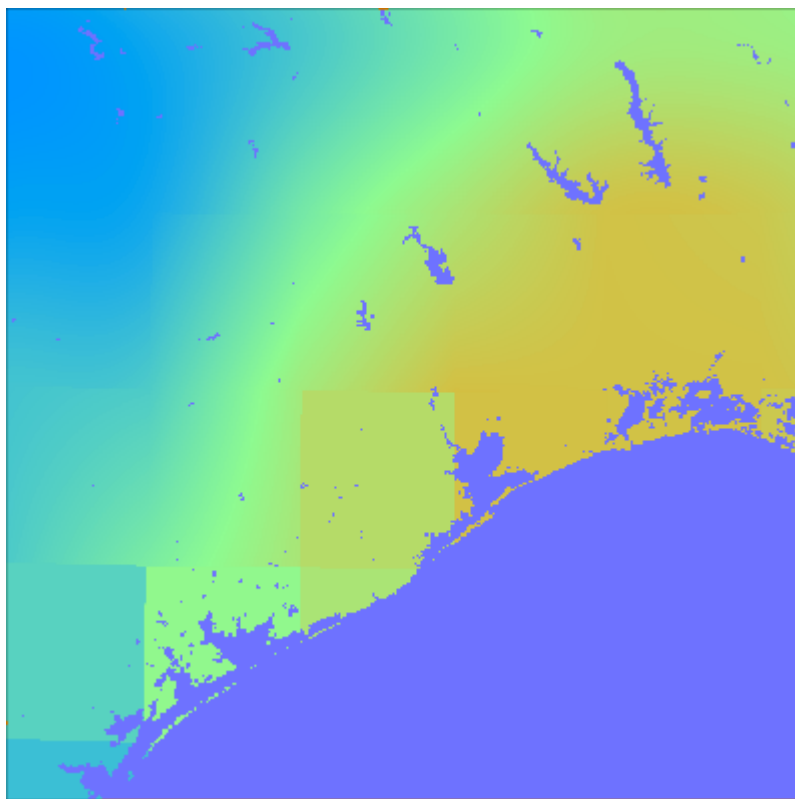


*Which interpolator was used at each
model grid point*

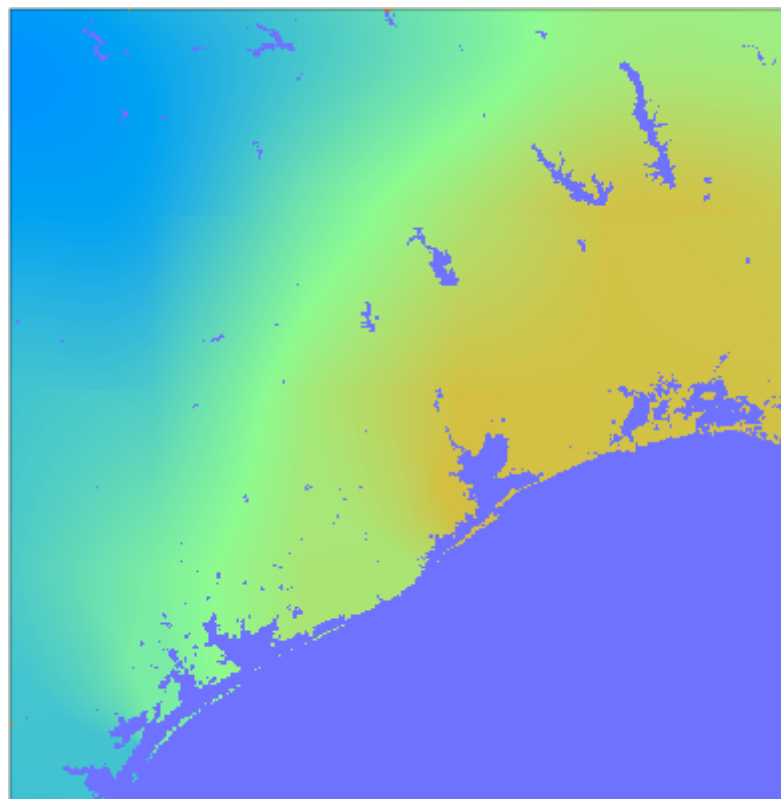


Example: A new METGRID.TBL entry

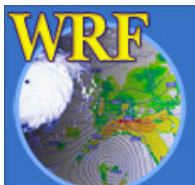
- By using **wt_average_4pt** instead of **average_4pt**



sixteen_pt + four_pt + average_4pt

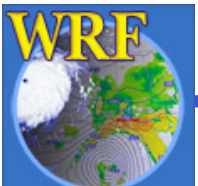


sixteen_pt + four_pt + wt_average_



METGRID.TBL: Real-time System Example

- Suppose we have a real-time system that:
 - Uses GFS for initial and boundary conditions
 - When possible (i.e., if the files are available soon enough) uses *soil moisture* and *soil temperature* fields from AGRME
- In our system, it may occasionally happen that the AGRMET files are not ready when we want to start our WRF run
 - Because system is real-time, we want to proceed using just the GFS land surface fields!



METGRID.TBL: Real-time System Example

- We already know how to run ungrib on multiple sources of data to get

GFS:YYYY-MM-DD_HH

and

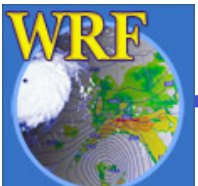
AGRMET:YYYY-MM-DD_HH

intermediate files, and specify

fg_name = 'GFS', 'AGRMET',

in the `&metgrid` namelist record to use both sources

See p. 3-17



METGRID.TBL: Real-time System Example

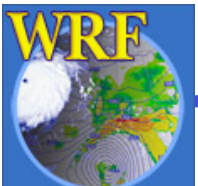
Without further changes, what happens if:

Only GFS data are available when we run metgrid

Metgrid runs and warns that no AGRMET data files were found:

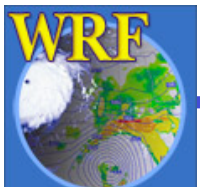
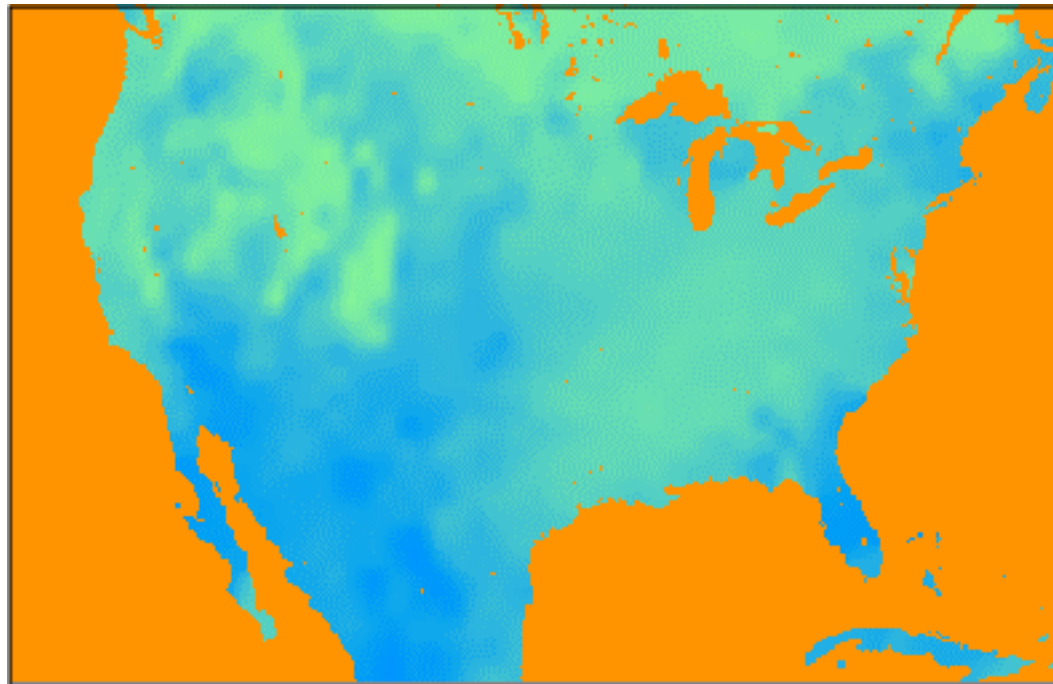
```
Processing 2006-04-01_00
    GFS
    AGRMET
WARNING: Couldn't open file AGRMET:2006-04-01_00 for
input.
```

Metgrid will finish, but will only use GFS data!



METGRID.TBL: Real-time System Example

And the 0-10 cm soil moisture field (SM000010) looks like:

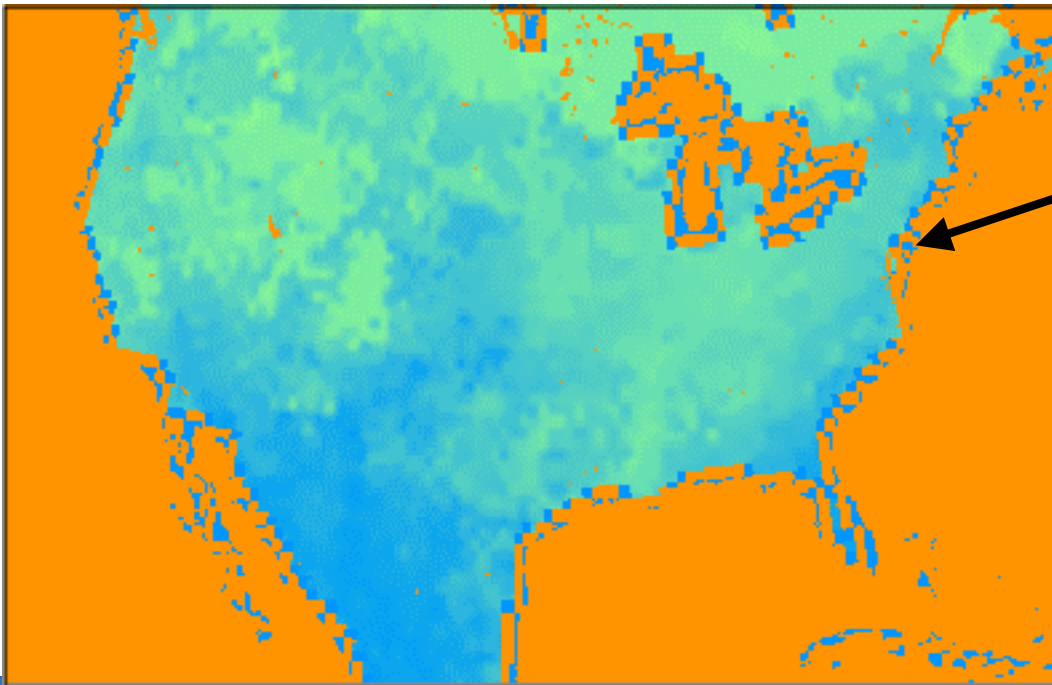


METGRID.TBL: Real-time System Example

However, what happens if:

Both GFS and AGRMET files are available when we run metgrid?

Our SM000010 field looks like:



We get unreasonable values with magnitude $\sim 1E30$ near land-water boundaries!



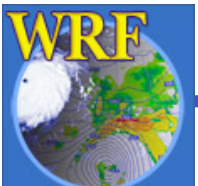
METGRID.TBL: Real-time System Example

Why are there bad values near coastlines? What went wrong?

In both Vtable.GFS and Vtable.AGRMET, the land-sea mask field is named LANDSEA

- In METGRID.TBL, our entry for SM000010 says:

```
=====
name=SM000010
interp_option=sixteen_pt+four_pt+wt_average_4pt+search
masked=water
interp_mask=LANDSEA(0)
fill_missing=1.
flag_in_output=FLAG_SM000010
=====
```

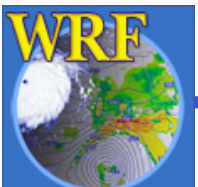


METGRID.TBL: Real-time System Example

```
=====
name=SM000010
interp_option=sixteen_pt+four_pt+wt_average_4pt+search
masked=water
interp_mask=LANDSEA(0)
fill_missing=1.
flag_in_output=FLAG_SM000010
=====
```

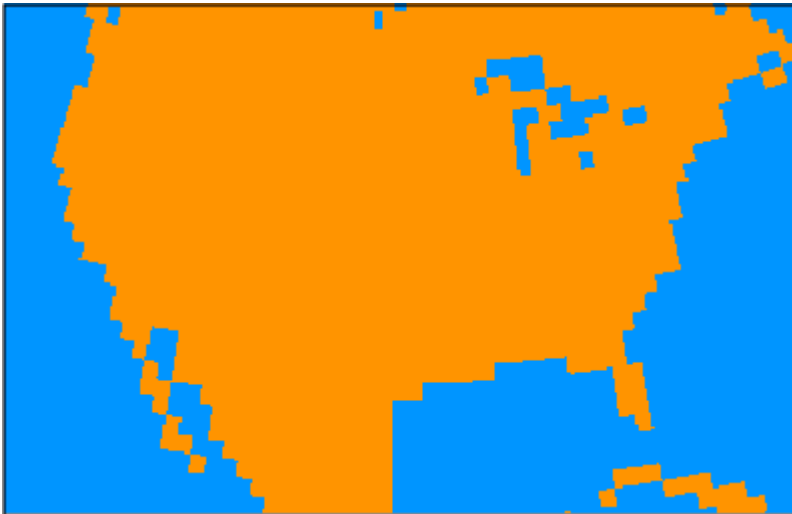
After metgrid reads in LANDSEA from GFS file *to use as an interpolation mask*, it ignored the LANDSEA field from AGRME *for use as a mask*.

- So, metgrid used the GFS LANDSEA mask even when interpolating AGRMET data!

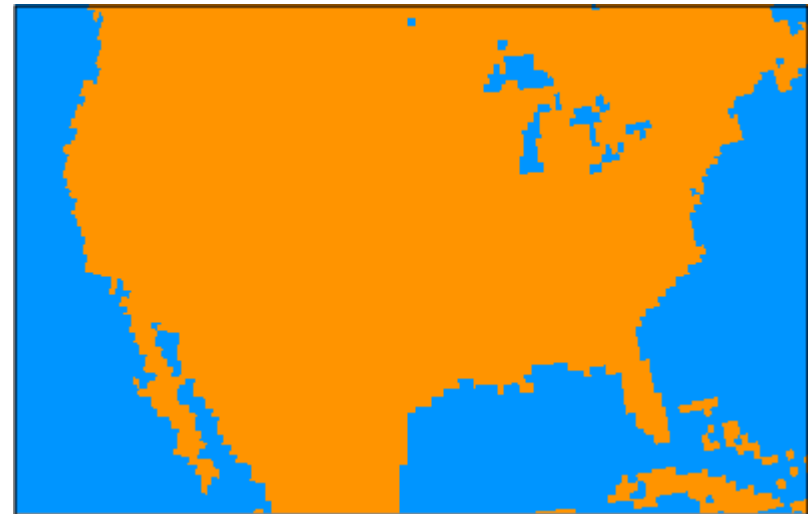


METGRID.TBL: Real-time System Example

When metgrid interpolated SM000010, it used the GFS landmask for a field masked by the AGRMET landmask!

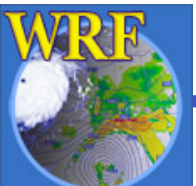


GFS LANDSEA field



AGRMET LANDSEA field

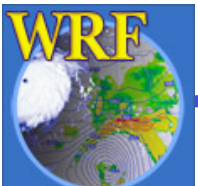
Note the disagreement between the two data sources near coastlines.



METGRID.TBL: Real-time System Example

Solution:

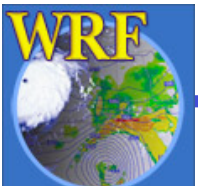
- Rename LANDSEA to *AGR_LAND* in Vtable.AGRMET
- Rename LANDSEA to *GFS_LAND* in Vtable.GFS
- Create separate entries in METGRID.TBL
 - one for GFS SM000010 field
 - another for AGRMET SM000010 field



METGRID.TBL: Real-time System Example

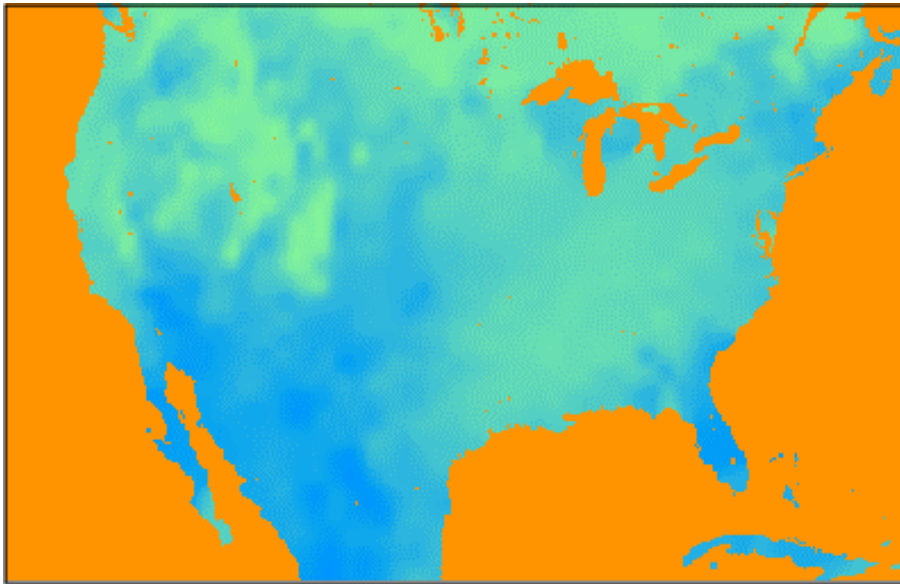
```
=====
name=SM000010; from_input=GFS
interp_option=sixteen_pt+four_pt+wt_average_4pt+search
masked=water
interp_mask=GFS_LAND(0)
fill_missing=1.
flag_in_output=FLAG_SM000010
=====
```

```
=====
name=SM000010; from_input=AGRMET
interp_option=sixteen_pt+four_pt+wt_average_4pt+search
masked=water
interp_mask=AGR_LAND(-1.E30)
fill_missing=1.
flag_in_output=FLAG_SM000010
=====
```

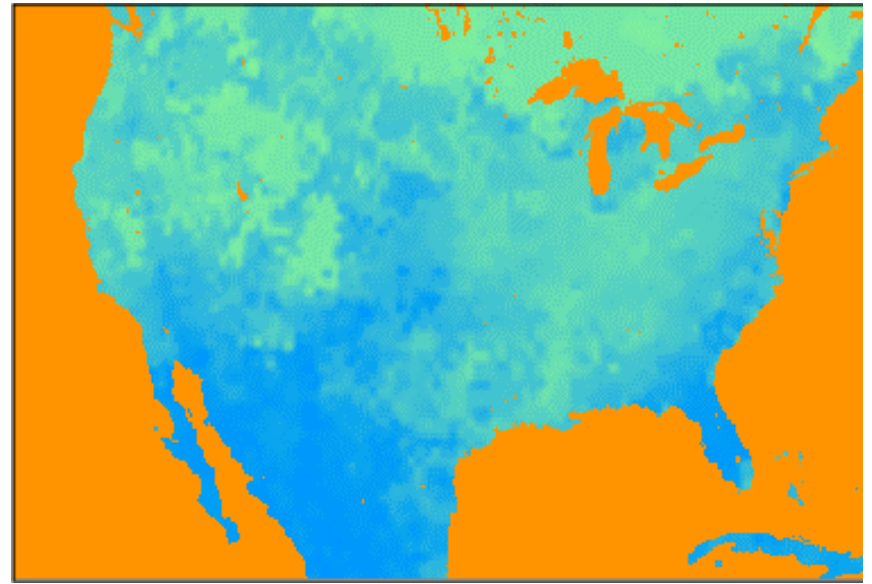


METGRID.TBL: Real-time System Example

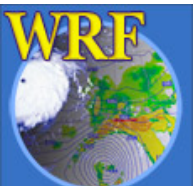
With modified Vtables and METGRID.TBL:



The SM000010 field when only GFS files are available



The SM000010 field when both GFS and AGRMET files are available



Summary

- In this lecture, we've seen
 - What the GEOGRID.TBL and METGRID.TBL files do
 - How to use new geographical data sources in the WPS
 - High-resolution land use and topography data
 - How to use the METGRID.TBL file to correct two types of interpolation-related problems
- For more other features of the WPS, see Chapter 3 of the User's Guide

