

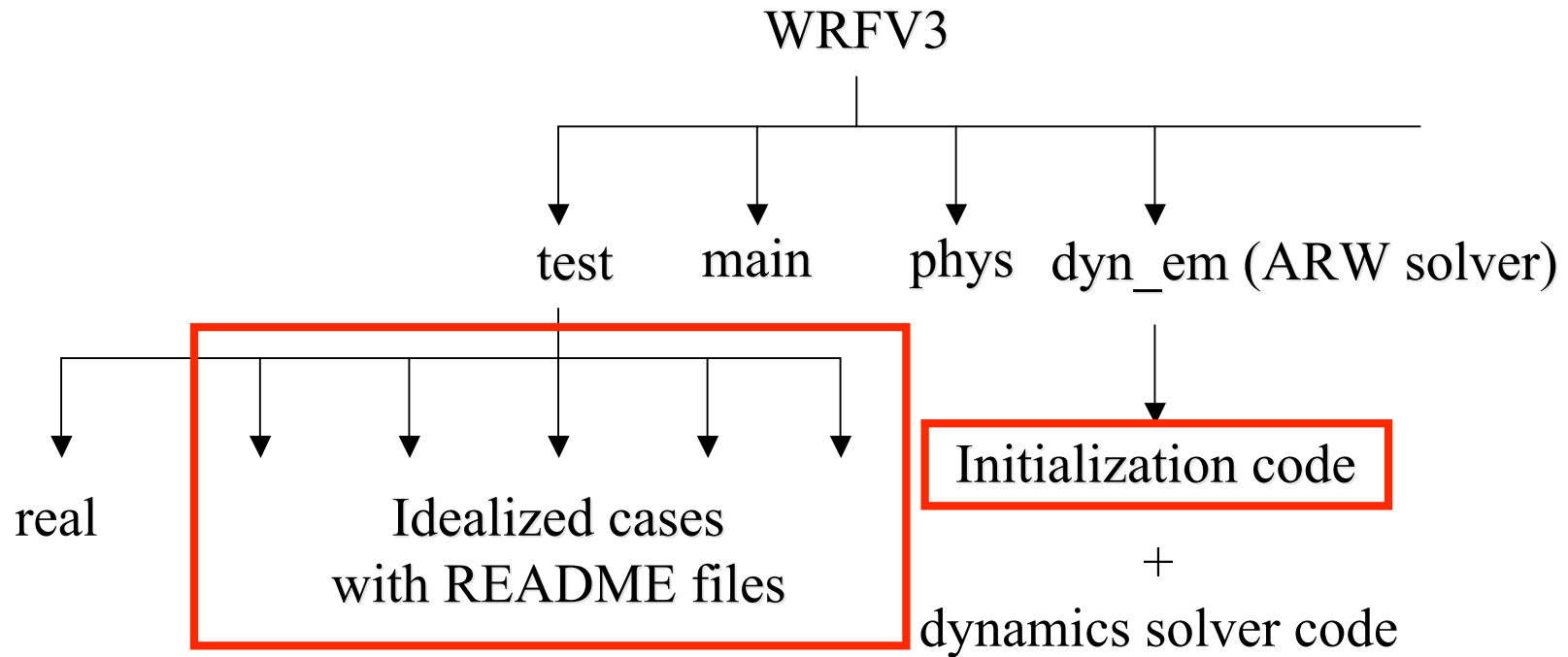
Initialization for Idealized Cases

Bill Skamarock


Why do we provide idealized cases?

1. The cases provide simple tests of the dynamics solver for a broad range of space and time scale:
LES - Δx meters, $\Delta t < \text{second}$;
Baroclinic waves - Δx 100 km, $\Delta t = 30$ minutes.
2. The test cases reproduce known solutions
(analytic, converged, or otherwise).
3. The cases provide a starting point for other idealized experiments.
4. They can be used to test physics development.
5. They are an easy starting point to test the code.

WRF ARW code



Test Cases for the WRF ARW Model

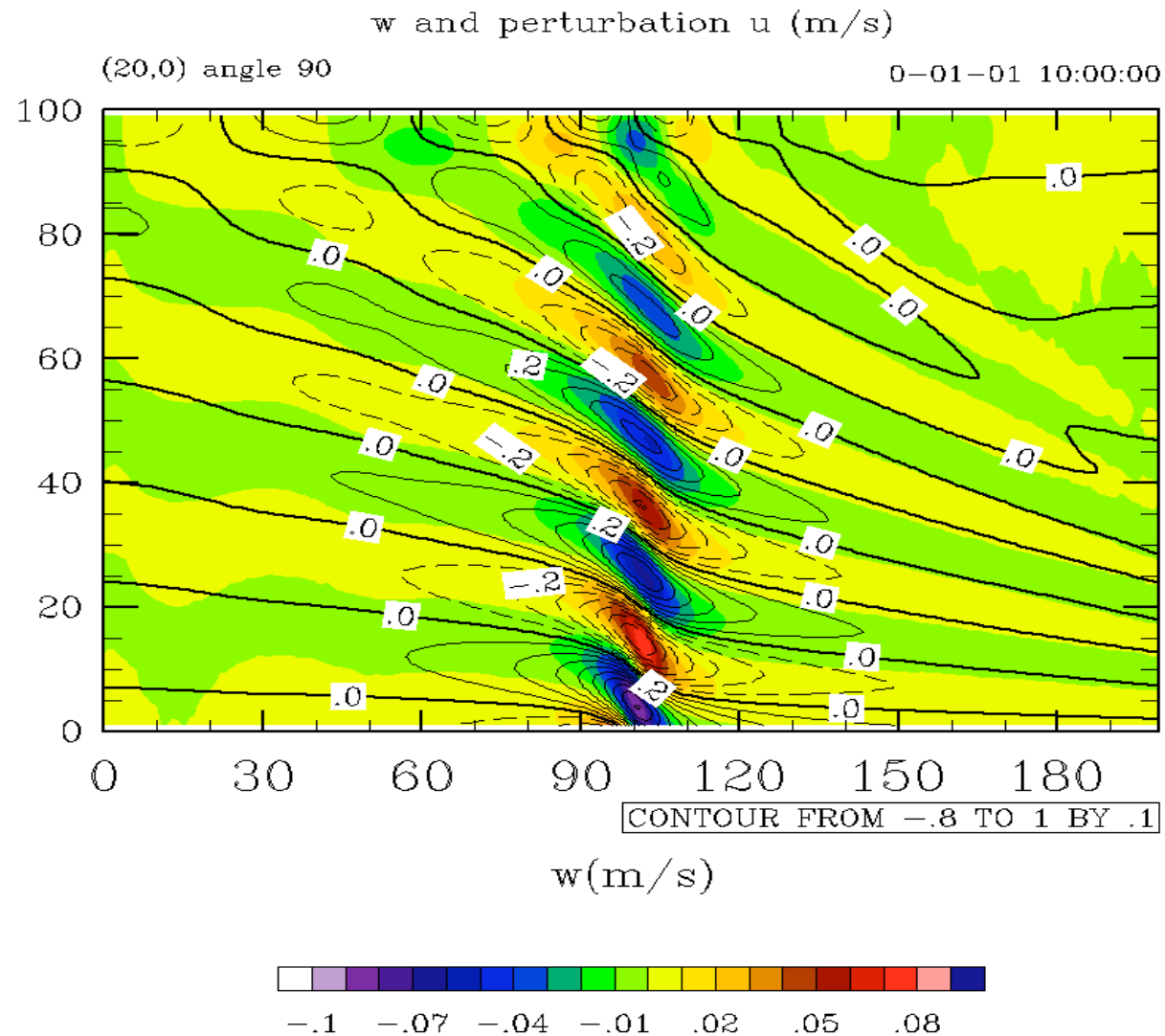
- 2D flow over a bell-shaped mountain
WRFV3/test/em_hill2d_x
 - 2D squall line (x, z ; y, z)
WRFV3/test/em_squall2d_x, em_squall2d_y
 - 3D quarter-circle shear supercell thunderstorm
WRFV3/test/em_quarter_ss
 - 3D baroclinic wave
WRFV3/test/em_b_wave
 - 2D gravity current
WRFV3/test/em_grav2d_x
 - 3D large-eddy simulation case
WRFV3/test/em_les
 - 3D global: Held-Suarez case
WRFV3/test/em_heldsuarez
 - 2D sea-breeze case
WRFV3/test/em_seabreeze2d_x
- 
- new in V3

Initialization Tasks

- Read in a single sounding (h , θ , Q_v , u and v) or pre-computed, balanced 2D profile (in the case of b_wave)
- Compute full pressure and (inverse) air density from input sounding
- Compute thermodynamic reference state, based on the sounding without moisture (dry pressure, dry inverse air density)
- Compute dry column pressure μ_d , and then model η levels
- Interpolating θ to η levels, compute inverse air density, and then geopotential - μ_d , θ , and geopotential are in exact hydrostatic balance
- Interpolating other fields to model η levels
- Model levels are set automatically; they can be stretched in η (close to equally spaced z), or equally spaced in η

2D Flow Over a Bell-Shaped Mountain

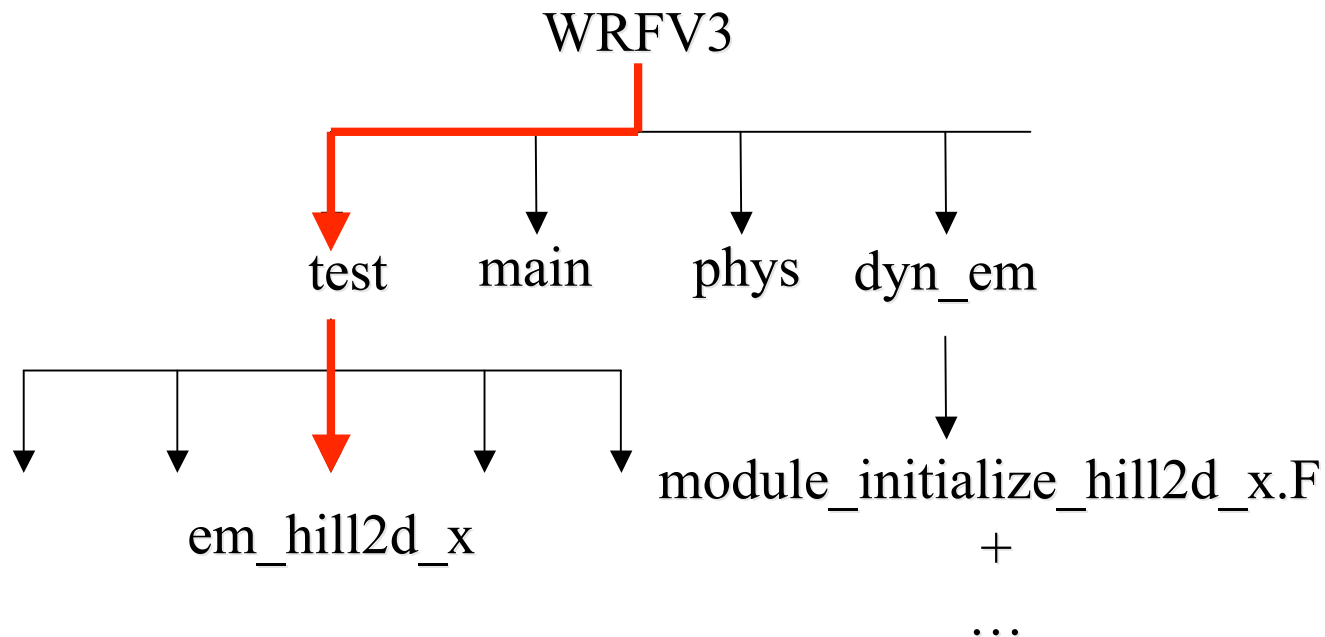
($dx = 2$ km, $dt = 20$ s, $T=10$ hr)



2D Flow Over a Bell-Shaped Mountain

Initialization module: `dyn_em/module_initialize_hill2d_x.F`

Case directory: `test/em_hill2d_x`



2D Flow Over a Bell-Shaped Mountain

Initialization code is in

WRFV3/dyn_em/module_initialize_hill2d_x.F

The terrain profile is set in the initialization code.

The thermodynamic sounding and the initial wind field is read from the ascii file

WRFV3/test/em_hill2d_x/input_sounding

The 2D solution is computed by integrating the 3D model with 3 points in periodic direction y; without an initial perturbation in y the solution remains y-independent.

Setting the terrain heights

In *WRFV3/dyn_em/module_initialize_hill2d_x.F*

```
SUBROUTINE init_domain_rk ( grid, &
```

```
...
```

```
  hm = 100.
```

```
  xa = 5.0
```

← mountain height and half-width

```
  icm = ide/2
```

← mountain position in domain
(center gridpoint in x)

```
...
```

Set height
field →

```
  DO j=jts,jte
```

```
  DO i=its,ite ! flat surface
```

```
    grid%ht(i,j) = hm/(1.+(float(i-icm)/xa)**2)
```

```
    grid%phb(i,1,j) = g*grid%ht(i,j)
```

```
    grid%php(i,1,j) = 0. ← lower boundary condition
```

```
    grid%ph0(i,1,j) = grid%phb(i,1,j)
```

```
  ENDDO
```

```
ENDDO
```


Setting the Initial Condition

In *WRFV3/dyn_em/module_initialize_hill2d_x.F*

```
SUBROUTINE init_domain_rk ( grid, &

...
!  get the sounding from the ascii sounding file, first get dry sounding and
!  calculate base state

write(6,*) ' getting dry sounding for base state '
dry_sounding = .true.
CALL get_sounding( zk, p_in, pd_in, theta, rho, u, v, qv, dry_sounding, &
                  nl_max, nl_in, .true.)

...

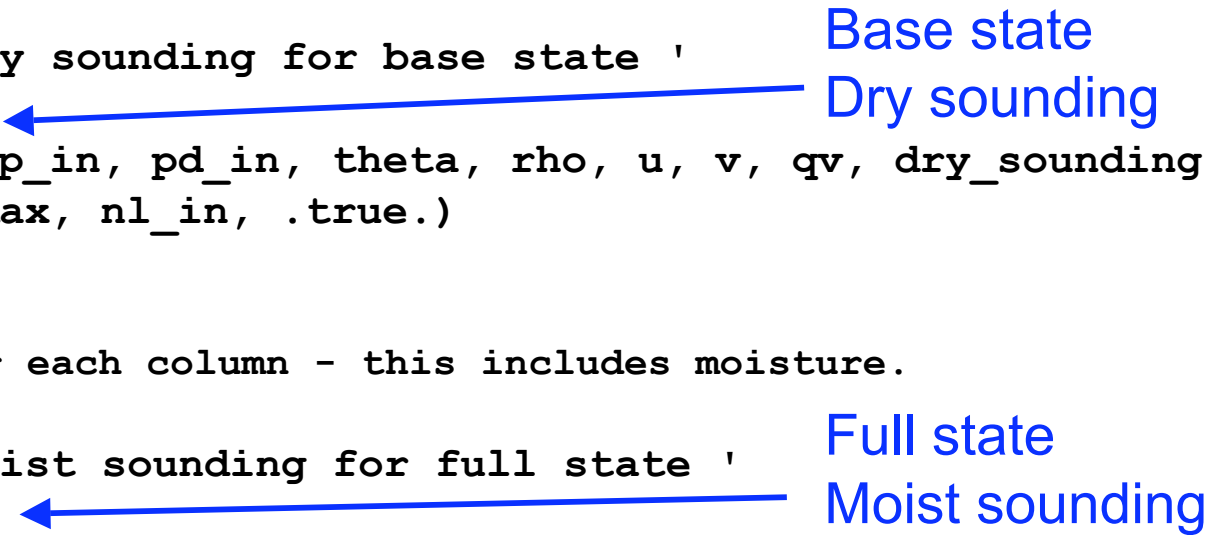
!  calculate full state for each column - this includes moisture.

write(6,*) ' getting moist sounding for full state '
dry_sounding = .false.
CALL get_sounding( zk, p_in, pd_in, theta, rho, u, v, qv, dry_sounding, &
                  nl_max, nl_in, .false. )

...
```

Base state
Dry sounding

Full state
Moist sounding



Sounding File Format

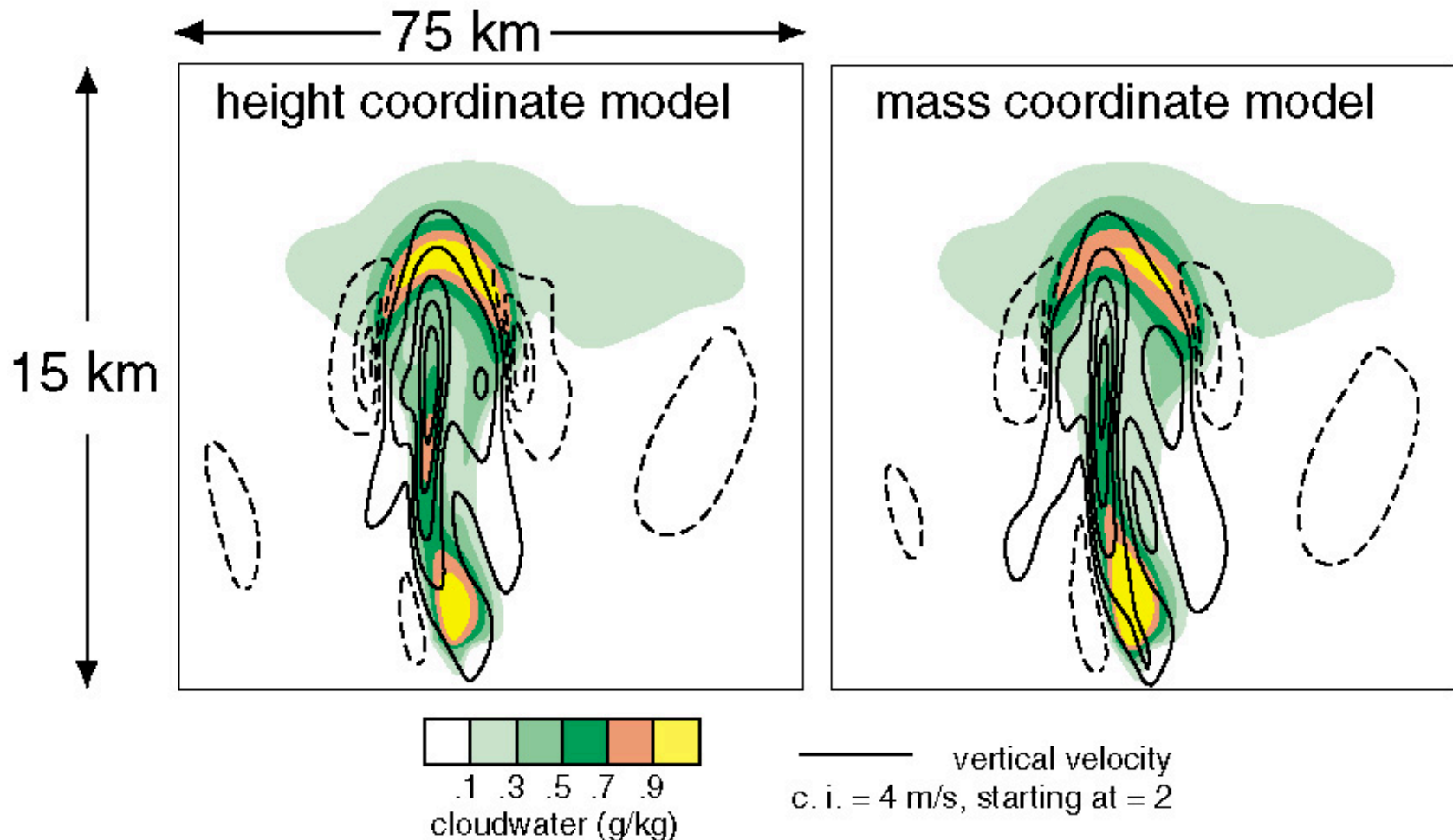
File: *WRFV3/test/em_quarter_ss/input_sounding*

	surface Pressure (mb)	surface potential Temperature (K)	Surface vapor mixing ratio (g/kg)		
line 1	1000.00	300.00	14.00		
	250.00	300.45	14.00	-7.88	-3.58
	750.00	301.25	14.00	-6.94	-0.89
each successive line is a point in the sounding	1250.00	302.47	13.50	-5.17	1.33
	1750.00	303.93	11.10	-2.76	2.84
	2250.00	305.31	9.06	0.01	3.47
	2750.00	306.81	7.36	2.87	3.49
	3250.00	308.46	5.95	5.73	3.49
	3750.00	310.03	4.78	8.58	3.49
	4250.00	311.74	3.82	11.44	3.49
	4750.00	313.48	3.01	14.30	3.49
	height (m)	potential temperature (K)	vapor mixing ratio (g/kg)	U (west-east) velocity (m/s)	V (south-north) velocity (m/s)

2D squall line simulation

Squall-Line Simulations, $T = 3600$ s

$$dx = dz = 250 \text{ m}, \nu = 300 \text{ m}^2/\text{s}$$



2D squall line simulation

squall2d_x is (x,z), *squall2d_y* is (y,z); both produce the same solution.

Initialization codes are in

WRFV3/dyn_em/module_initialize_squall2d_x.F

WRFV3/dyn_em/module_initialize_squall2d_y.F

This code also introduces the initial perturbation.

The thermodynamic soundings and hodographs are in the ascii input files

WRFV3/test/em_squall2d_x/input_sounding

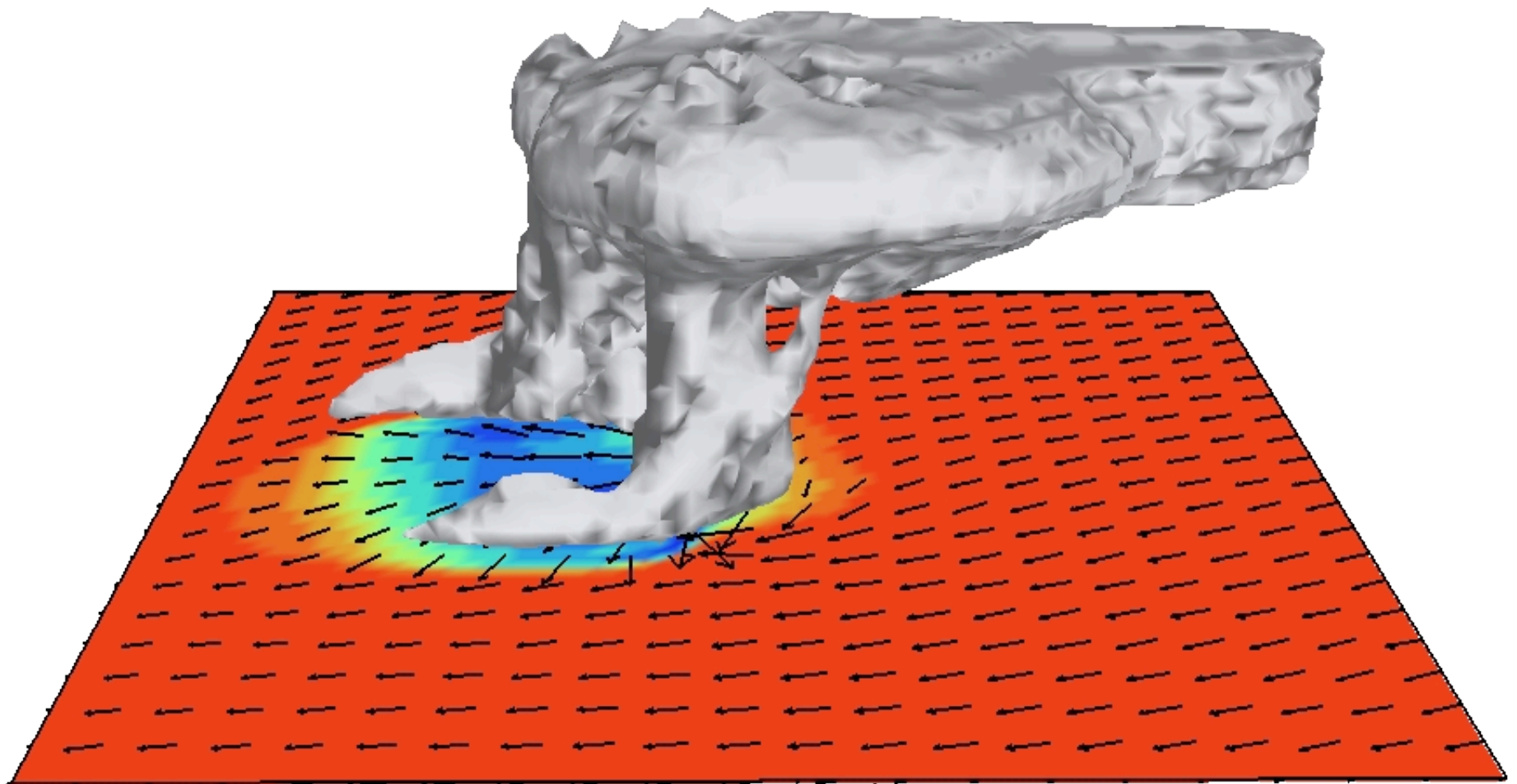
WRFV3/test/em_squall2d_y/input_sounding

3D supercell simulation

Height coordinate model

($dx = dy = 2$ km, $dz = 500$ m, $dt = 12$ s, $160 \times 160 \times 20$ km domain)

Surface temperature, surface winds and cloud field at 2 hours



3D supercell simulation

Initialization code is in

WRFV3/dyn_em/module_initialize_quarter_ss.F

The thermodynamic sounding and hodograph is read from the ascii input file

WRFV3/test/em_quarter_ss/input_sounding

The initial perturbation (warm bubble) is hardwired in the initialization code.

Setting the initial perturbation

In *WRFV3/dyn_em/module_initialize_quarter_ss.F*

```

SUBROUTINE init_domain_rk ( grid, &
...
! thermal perturbation to kick off convection
...
DO J = jts, min(jde-1,jte)
  yrad = dy*float(j-nyc)/10000.
!  yrad = 0.
  DO I = its, min(ide-1,ite)
    xrad = dx*float(i-nxc)/10000.
!    xrad = 0.
    DO K = 1, kte-1

```

horizontal radius of the
perturbation is 10 km, centered
at (x,y) gridpoints (nxc, nyc)

```

! put in preturbation theta (bubble) and recalc density. note,
! the mass in the column is not changing, so when theta changes,
! we recompute density and geopotential

```

```

      zrad = 0.5*(ph_1(i,k,j)+ph_1(i,k+1,j) &
                +phb(i,k,j)+phb(i,k+1,j))/g
      zrad = (zrad-1500.)/1500.
      RAD=SQRT(xrad*xrad+yrad*yrad+zrad*zrad)
      IF(RAD <= 1.) THEN

```

vertical radius of the
perturbation is 1500 m

perturbation added
to initial theta field

```

        grid%t_1(i,k,j)=T_1(i,k,j)+delt*cos(.5*PI*RAD)**2
        grid%t_2(i,k,j)=T_1(i,k,j)
        qvf = 1. + 1.61*moist_1(i,k,j,P_QV)
        grid%alt(i,k,j) = (r_d/p1000mb)*(t_1(i,k,j)+t0)*qvf* &
                          ((p(i,k,j)+pb(i,k,j))/p1000mb)**cvpm)
        grid%al(i,k,j) = alt(i,k,j) - alb(i,k,j)

```

maximum amplitude
of the perturbation

```

      ENDIF

```

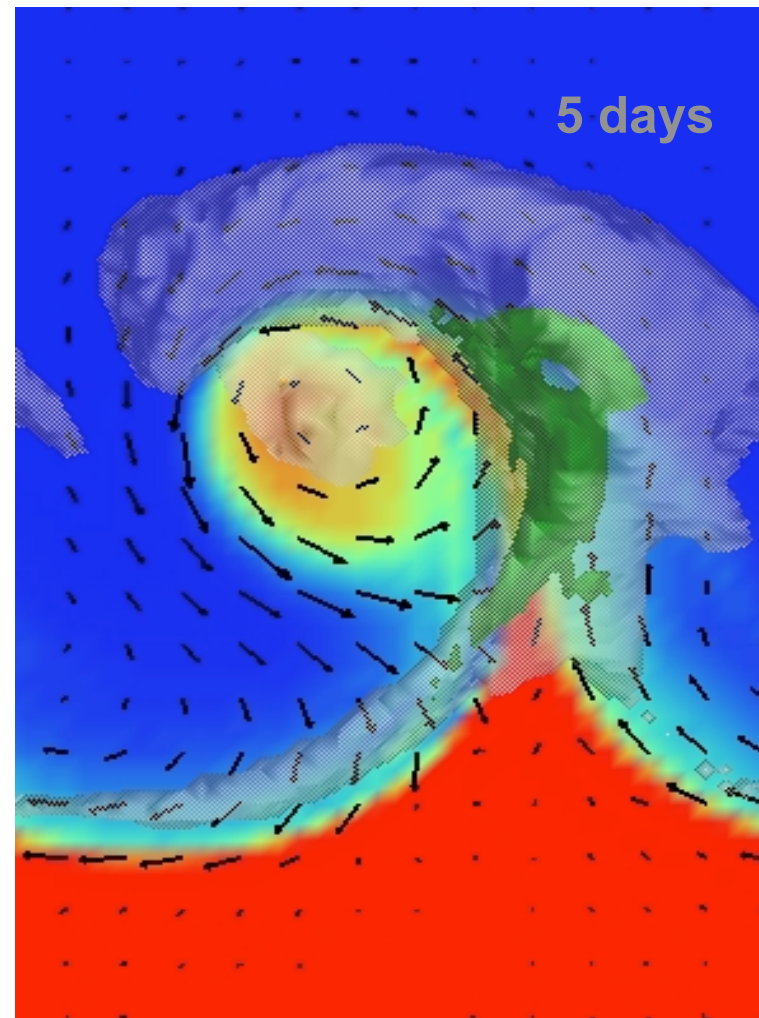
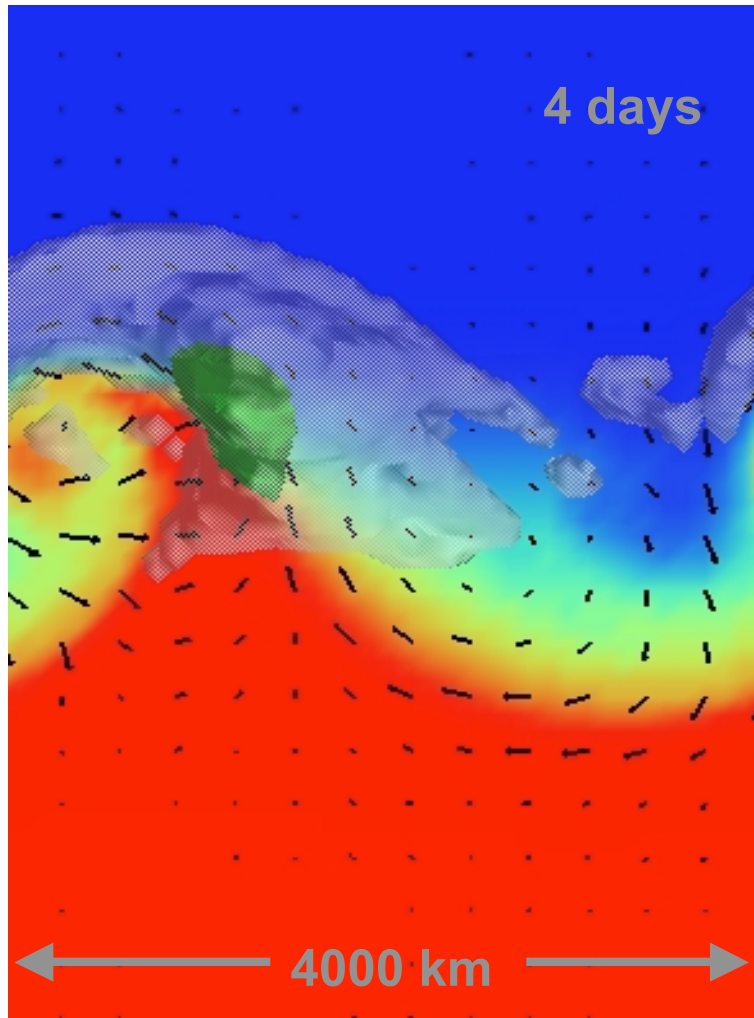
```

    ENDDO

```


Moist Baroclinic Wave Simulation

Height coordinate model ($dx = 100$ km, $dz = 250$ m, $dt = 600$ s)
Surface temperature, surface winds, cloud and rain water



Moist Baroclinic Wave Simulation

Initialization code is in

WRFV3/dyn_em/module_initialize_b_wave.F

The initial jet (y,z) is read from the binary input file

WRFV3/test/em_b_wave/input_jet

The initial perturbation is hardwired in the initialization code.

Moist Baroclinic Wave Simulation

Default configuration in

WRFV3/test/em_b_wave/namelist.input

runs the dry jet in a periodic channel with dimension (4000 x 8000 x 16 km) (x,y,z).

Turning on any microphysics

(mp_physics > 0 in namelist.input) puts moisture into the model state.

The initial jet only works for $dy = 100$ km and 81 grid points in the y (south-north) direction.

Gravity Current Simulation

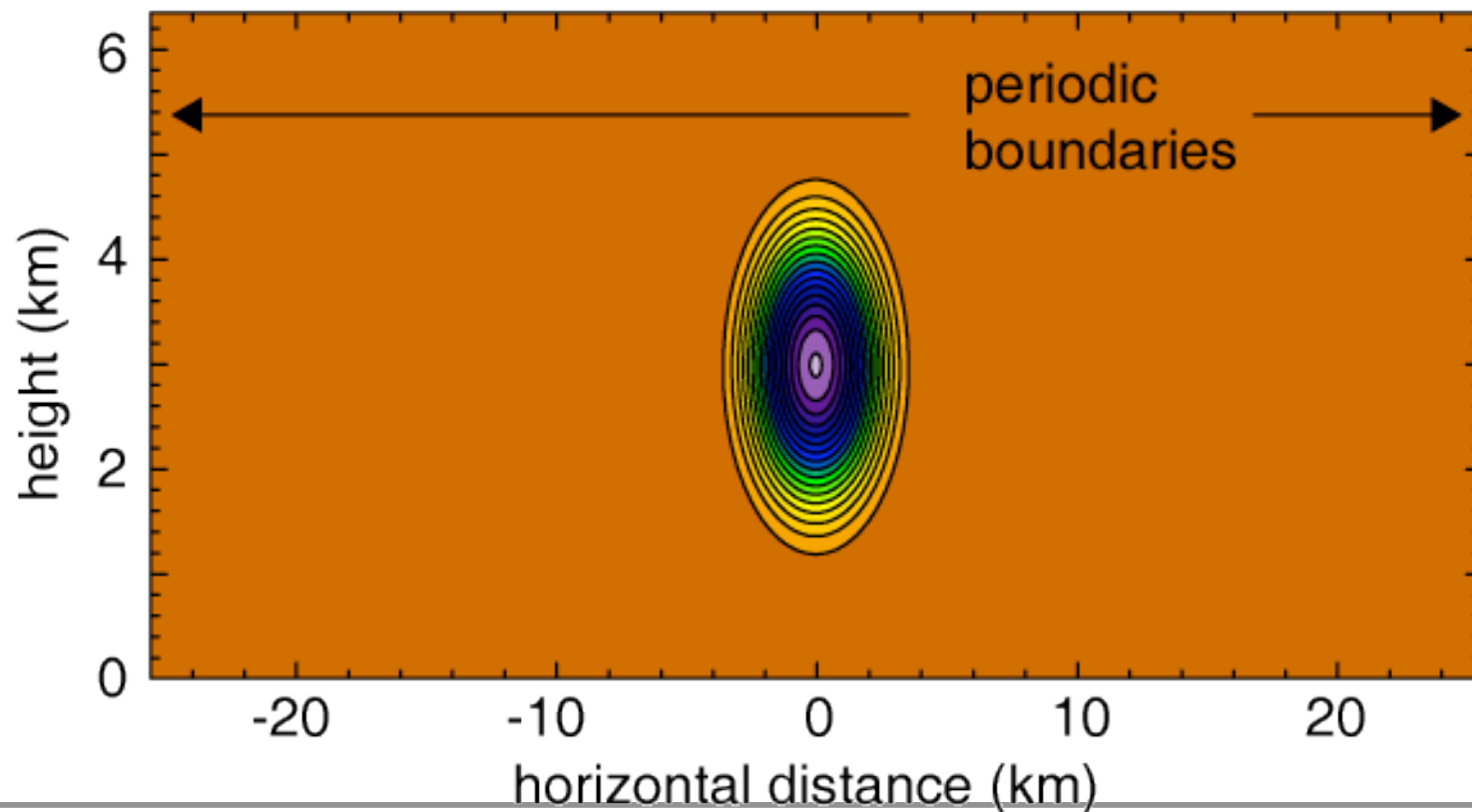
(Straka et al, IJNMF, 1993)

2D channel (x , z ; 51.2 x 6.4 km)

Initial state: $\theta = 300$ K (neutral) + perturbation (max = 16.2 K)

Eddy viscosity = $75 \text{ m}^2/\text{s}$ (constant)

Initial state, potential temperature (c.i. = 1 K)

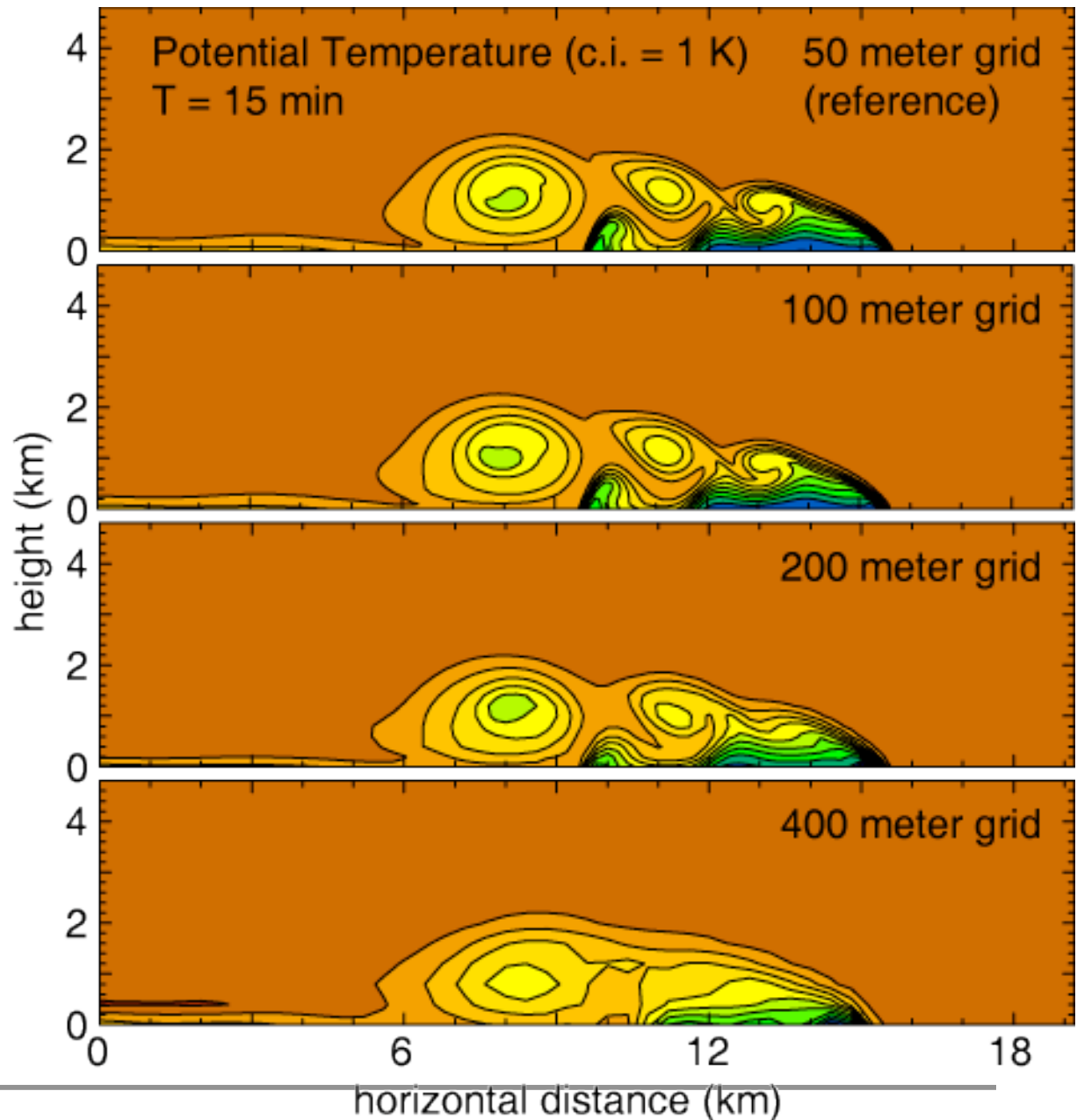


Gravity Current Simulation

Default case, $dx = 100$ m,
5th order upwind advection,
uses `namelist.input.100m`

$dx = 200$ m,
5th order upwind advection,
use `namelist.input.200m`

$dx = 400$ m,
5th order upwind advection,
use `namelist.input.400m`



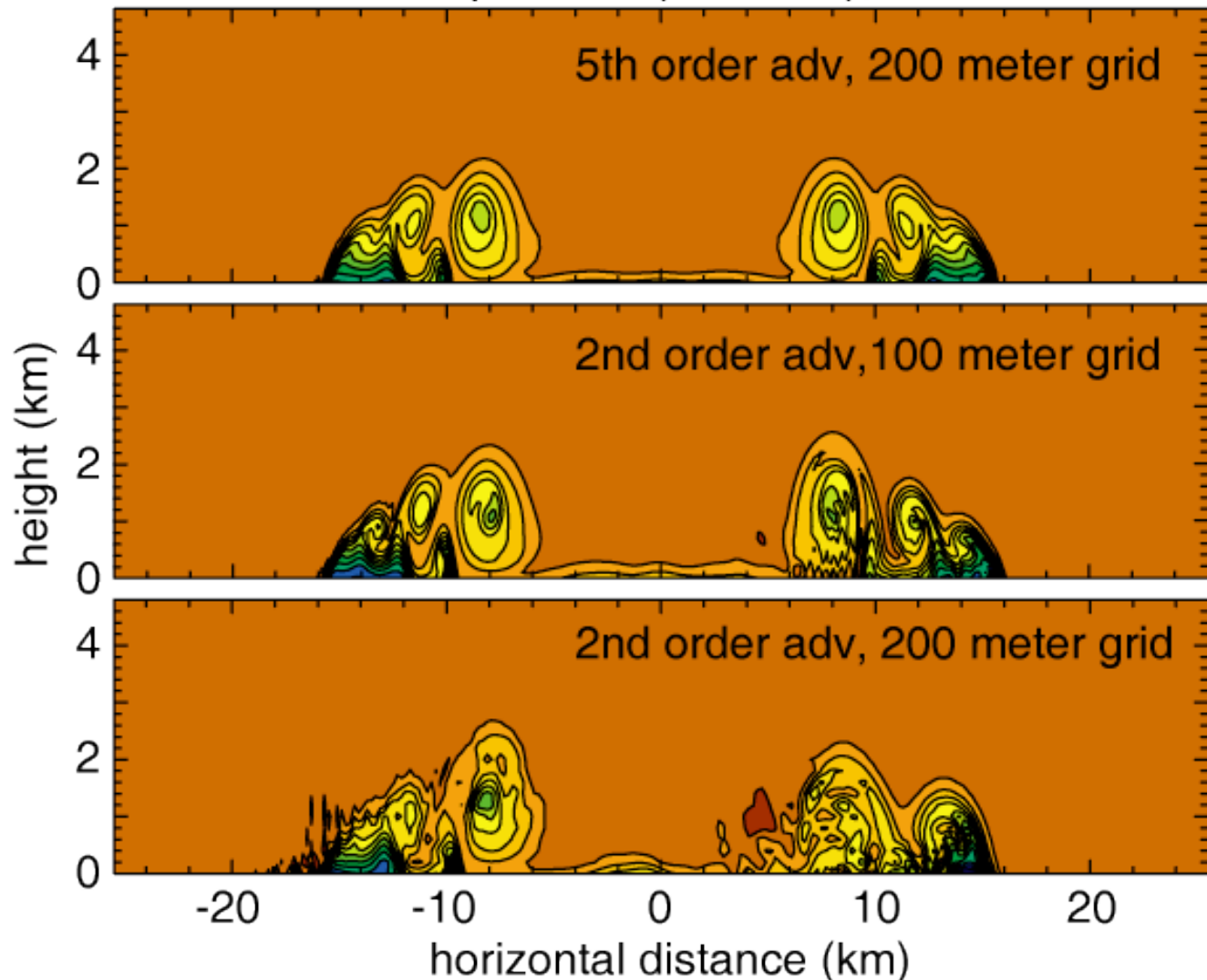
Gravity Current Simulation

Translating Density Current, $U_m = 20$ m/s
Potential Temperature (c.i. = 1 K), $T = 15$ min

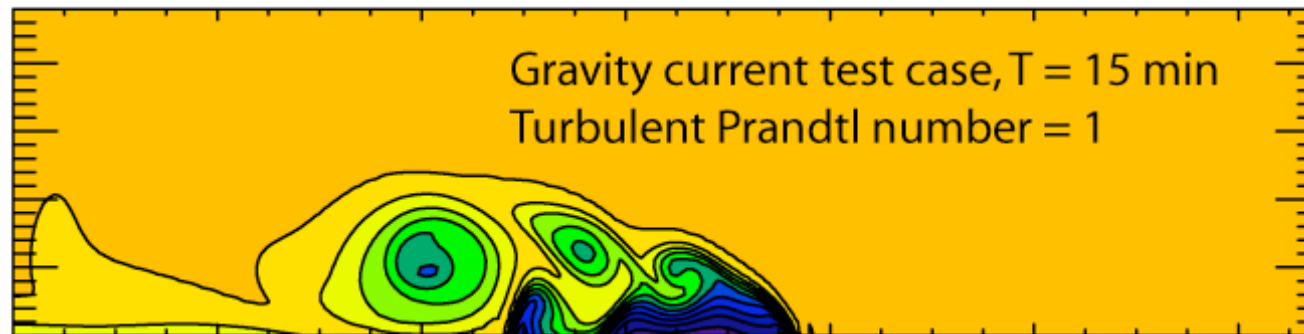
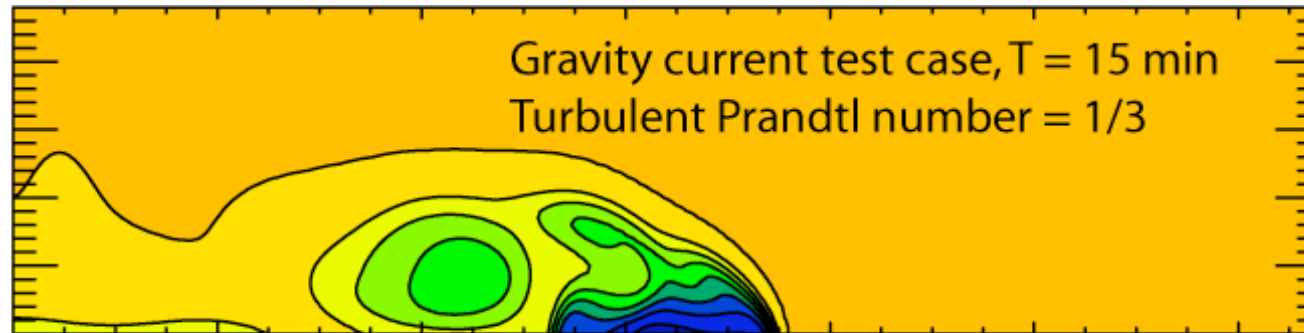
5th order upwind advection,
use namelist.input.200m
and input_sounding.um=20

use namelist.input.100m
with 2nd order advection
and input_sounding.um=20

use namelist.input.200m
with 2nd order advection
and input_sounding.um=20



Gravity Current Simulation



The turbulent Prandtl number in WRF $1/3$,
So the default WRF test case will give this solution.

To recover the Straka et al (1993) solution,
change the parameter *Prandtl* to 1 (from $1/3$) in
WRFV3/share/module_model_constants.F
WRFV3/share/module_diffusion_em.F, *module_big_step_utilities.F*

Gravity Current Simulation

Initialization code is in

WRFV3/dyn_em/module_initialize_grav2d_x.F

The initial cold bubble is hardwired in the initialization code.

Held-Suarez Case

Initialization code is in

WRFV3/dyn_em/module_initialize_heldsuarez.F

The initial model state is an isothermal atmosphere on flat earth with no winds, and random temperature perturbation

Test case directory is in

WRFV3/test/em_heldsuarez

Large-Eddy Simulation Case

Initialization code is in

WRFV3/dyn_em/module_initialize_les.F

Test case directory is in

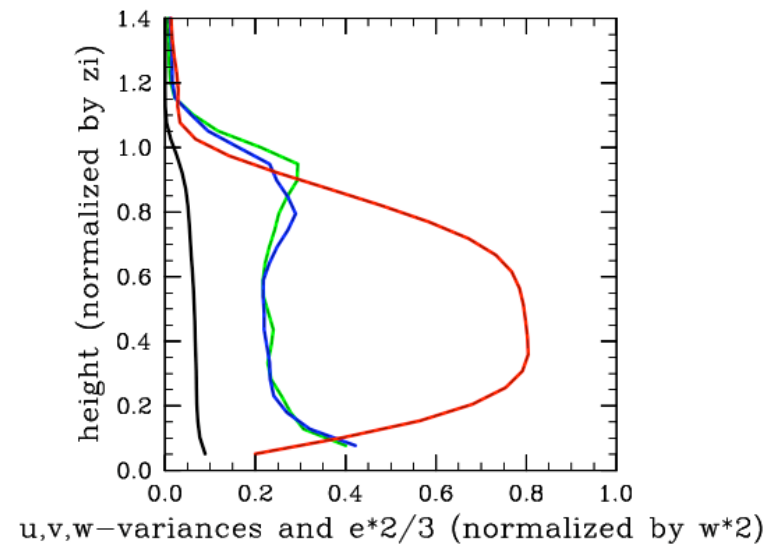
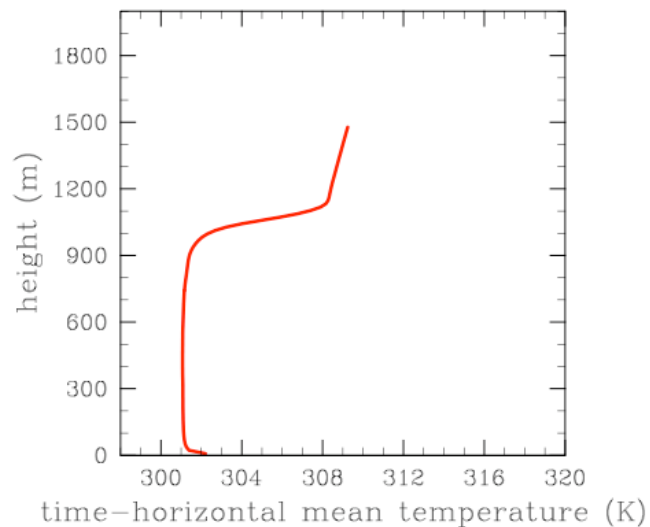
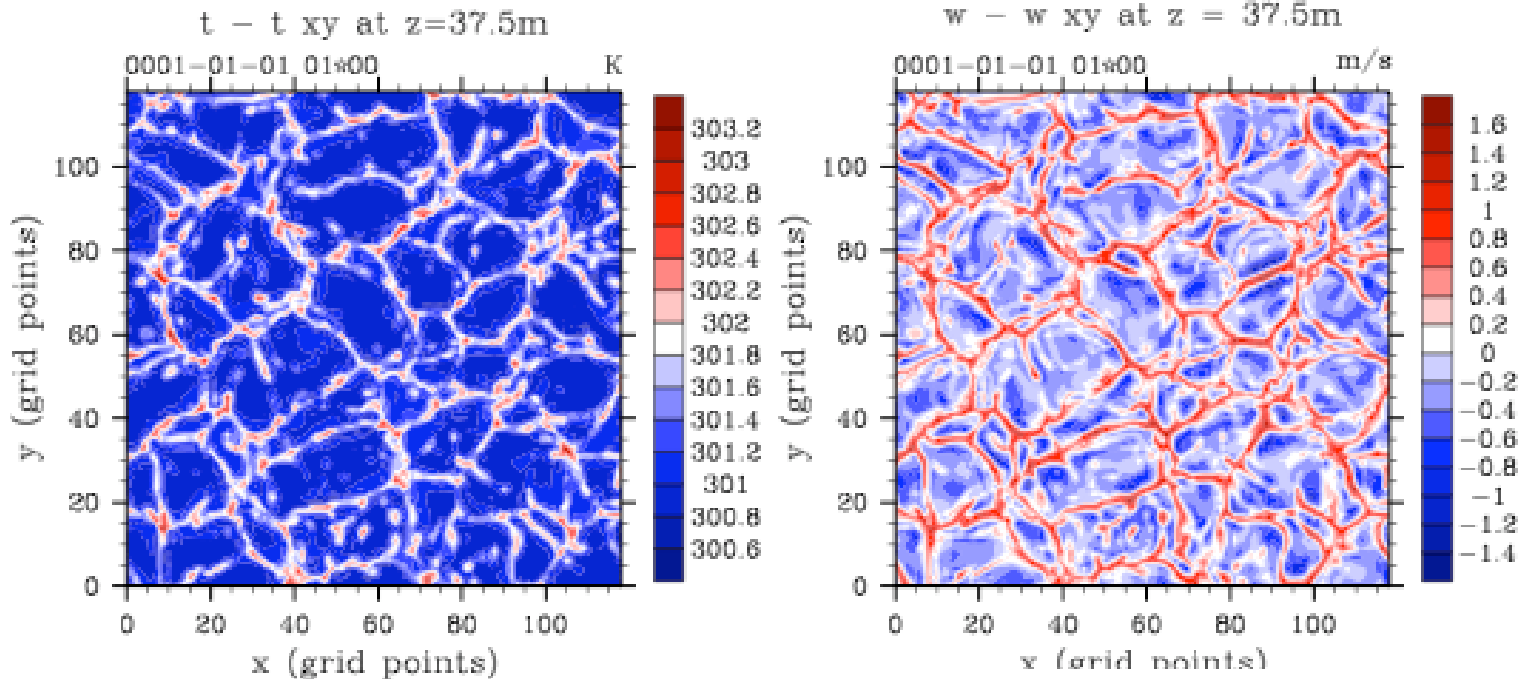
WRFV3/test/em_les

The default case is a large-eddy simulation of free convective boundary layer with no winds. The turbulence of the free CBL is driven and maintained by namelist-specified surface heat flux.

An initial sounding with mean winds is also provided.

Reference: Moeng et al. 2007 MWR

Large-Eddy Simulation Case



2D Sea-Breeze Simulation Case

Initialization code is in

WRFV3/dyn_em/module_initialize_seabreeze2d_x.F

Test case directory is in

WRFV3/test/em_seabreeze2d_x

The initial state has no wind, and is perturbed by small random temperature changes

An example to show how to set surface parameters so that one may use full surface physics

More on Idealized Cases ..

Descriptions:

WRFV3/README_test_cases

WRFV3/test/em_/README*