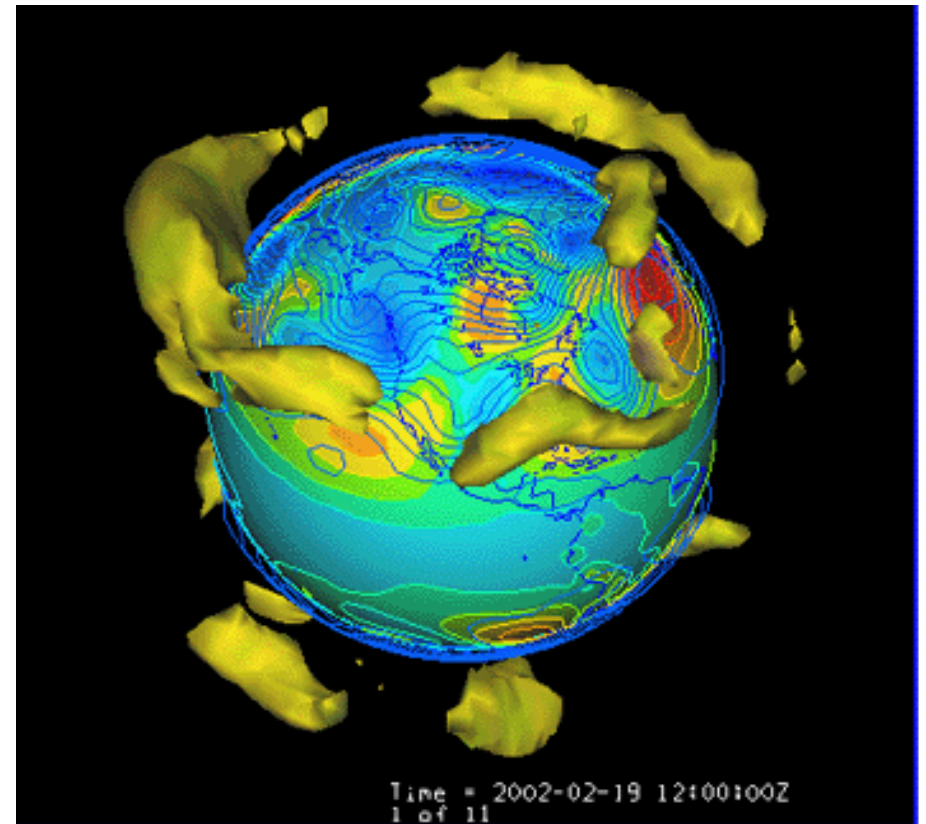
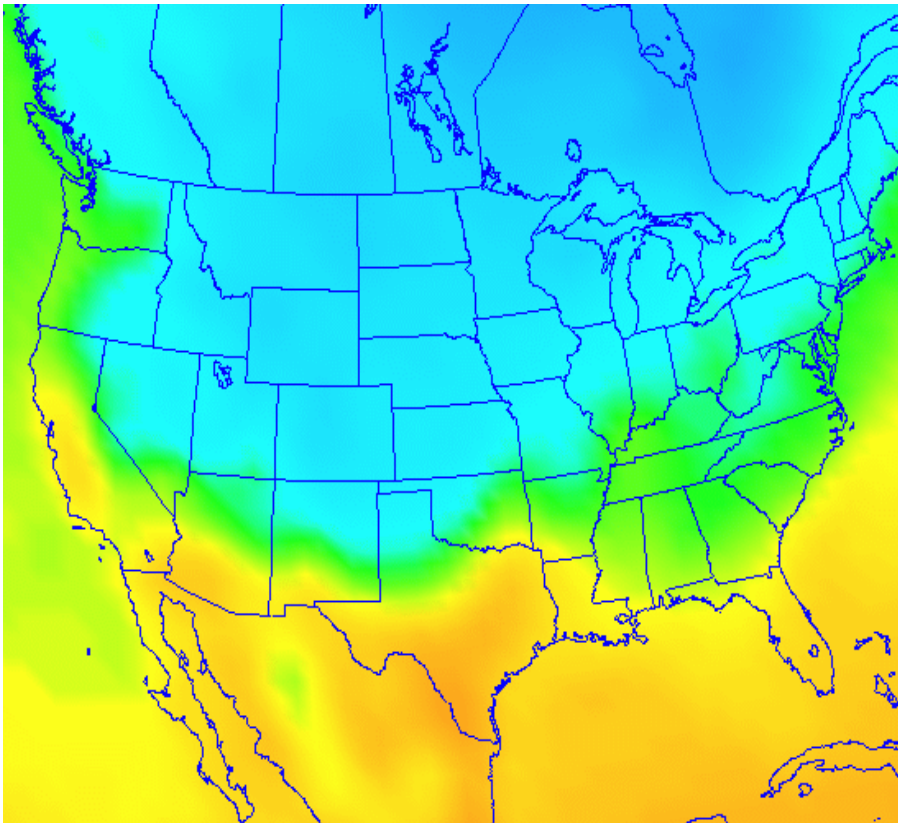


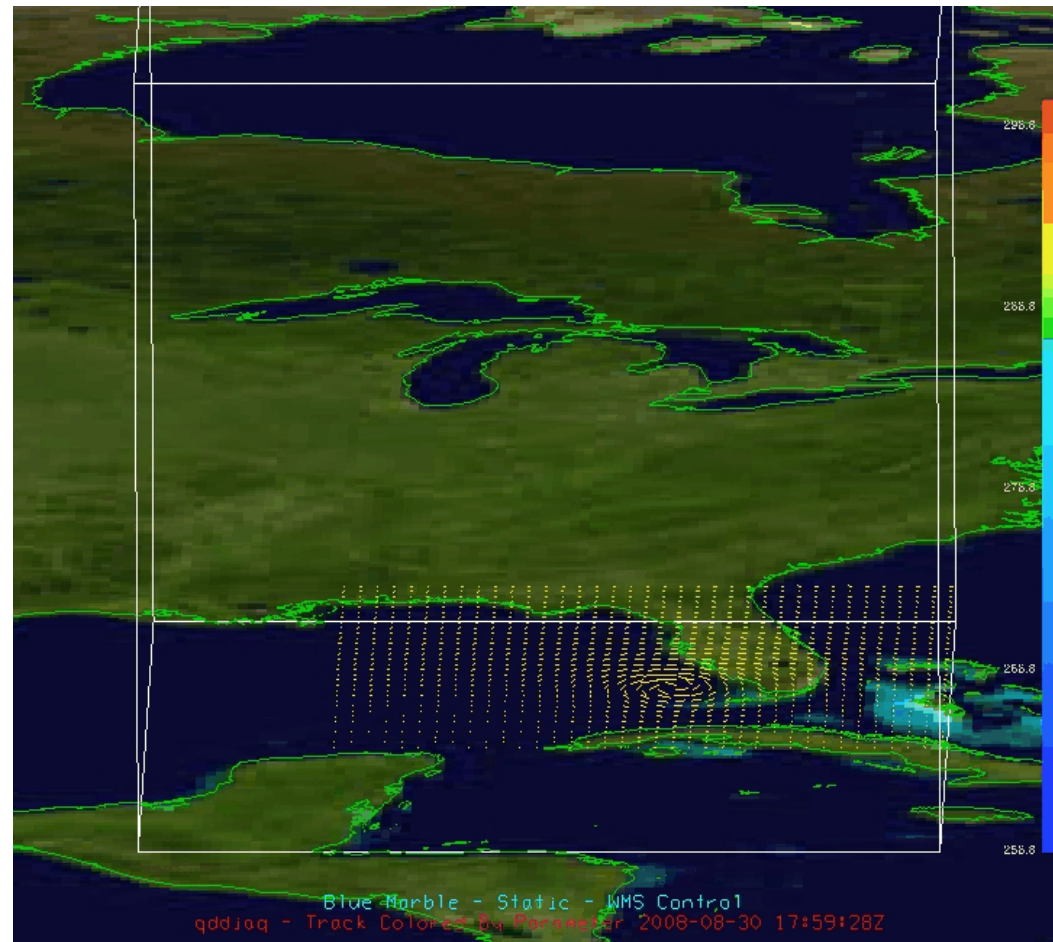
Unidata IDV – What is it?

- Unidata Integrated Data Viewer
 - 2D and 3D visualization
 - GUI or scripting (Jython, ISL) interface
 - Interactive probes for dataset exploration
 - Parameter readouts, vertical profiles, time/height displays, etc.
 - A rich set of analysis capabilities
 - Integrate model and observational data
 - Access local and remote datasets
 - Visualize and analyze post-processed WRF output
 - works best if grid is unstaggered

Unidata IDV – What can it do?



Unidata IDV – What can it do?



Unidata IDV – Where to get it?

- <https://www.unidata.ucar.edu/software/idv>
 - Point-and-click installers
 - Windows (.exe), Mac (.dmg), and Linux (.sh) installers available for both 32 and 64-bit systems
- System requirements:
 - 2+ GB RAM
 - Java 1.6
 - *Latest* video card driver