

# Introduction to WRF-Chem

Georg Grell

Steven E. Peckham, Stuart A. McKeen, Jan Kazil, R. Ahmadov + others from  
**NOAA/ESRL**

Jerome Fast, William Gustafson jr., P.L. Ma, B. Singh+ many others from **PNNL**

+ Alma Hodzic, Christine Wiedinmyer, Gabi Pfister, Mary Barth and many others  
from **NCAR**

other **University contributions**  
+ Saulo Freitas (**CPTEC, BRAZIL**)  
+new stuff from **NCSU** (Yang Zhang)

**+ many more national and international  
collaborators**

WRF-Chem web site - <http://wrf-model.org/WG11>



# WRF-Chem

**Community effort**

**Largest contributing groups: ESRL,  
PNNL, NCAR**

**Other significant contributions  
from: National and international  
Universities, CPTEC Brazil, NASA,  
AFWA, NCSU**

# Structure of Talk

1. Brief description of only the *general features* of WRF-Chem
2. Some applications of what the model may be used for are mixed in

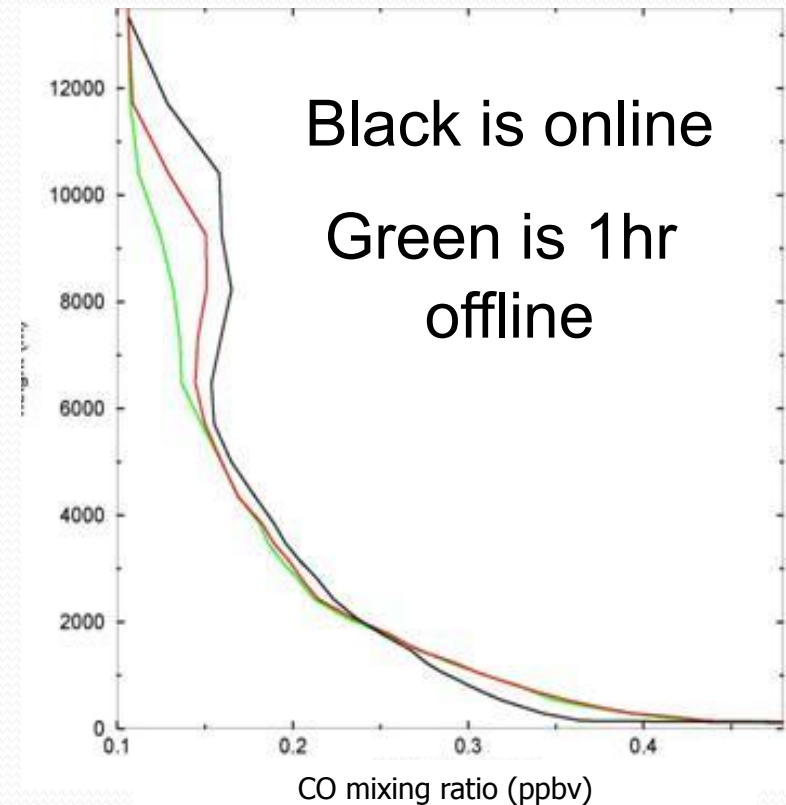
**There are more than 50 chemistry options for the main gas phase chemistry and aerosol modules!**

# WRF-Chem

- Chemistry is online, completely embedded within WRF CI
- Consistent: all transport done by meteorological model
  - Same vertical and horizontal coordinates (no horizontal and vertical interpolation)
  - Same physics parameterization for subgrid scale transport
  - No interpolation in time
- Easy handling (Data management)
- Ideally suited to study feedbacks between chemistry and meteorology
- Ideally suited for air quality forecasting on regional to cloud resolving scales

# Why Online?

- Offline modeling introduces errors for air quality applications
  - Error for offline modeling is increasing with increasing horizontal resolution
  - Power spectrum analysis can show the amount of information that is lost in offline runs
- 2-way feedback in-between chemistry and meteorology
  - Process studies relevant for global climate change
  - Ultimately it should lead to improved data assimilation (meteorology) and improved weather forecasts



# What is needed for this type of modeling system?

1. Advection and diffusion (all done by WRF)
2. Sub-grid scale transport (WRF parameterizations, PBL, convection)
3. Some processes that are specific for chemical constituents, but need meteorology: emissions (biogenic, fire, sea salt, dust, volcanic, anthropogenic), dry deposition, wet scavenging
4. Treatment of chemical reactions, aqueous phase chemistry, gas phase species and aerosols
5. “Chemical” radiation routines (photolysis routines) that provide photolysis rates necessary for (4)
6. Capability of feedback from chemistry to meteorology (meteorological radiation and microphysics parameterizations, possibly also convective parameterizations)

# What is needed for this type of modeling system?

1. Advection and diffusion (all done by WRF)
2. Sub-grid scale transport (WRF parameterizations, PBL, convection)
3. Some processes that are specific for chemical constituents, but need meteorology: emissions (biogenic, fire, sea salt, dust, volcanic, anthropogenic), dry deposition, wet scavenging
4. **Treatment of chemical reactions, aqueous phase chemistry, gas phase species and aerosols**
5. “Chemical” radiation routines (photolysis routines) that provide photolysis rates necessary for (4)
6. Capability of feedback from chemistry to meteorology (meteorological radiation and microphysics parameterizations, possibly also convective parameterizations)



# Gas Phase Chemistry Packages

**Very complex part of the modeling system: Many additional species that are fully prognostic variables and require transport**

- Hard coded: chemical mechanism from RADM2
- Hard coded: Carbon Bond (CBM-Z) based chemical mechanism
- Kinetic PreProcessor (KPP) – Many different equations files exist (also for RADM2 and CBM-Z). KPP will generate the modules from equation files. These generated modules will then be used by WRF-Chem
- IN V3.5.1/ V3.6: CRIMech gas phas scheme (U. of Manchester, 240 species, 652 reactions)
- V3.7: CBo5

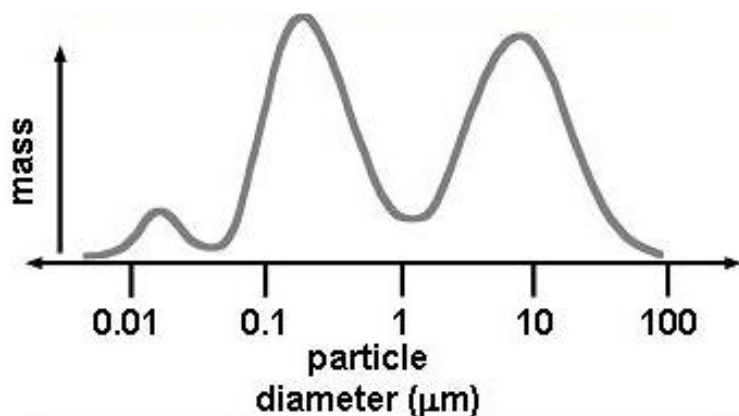


# Photolysis Packages – all coupled to aerosols and hydrometeors

- Madronich Photolysis
- Madronich F-TUV
- Fast-j photolysis scheme

# Available aerosol modules

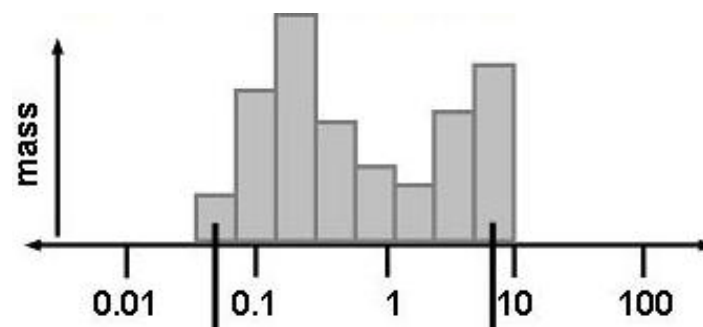
## (1) Modal



Aitken Mode	Accumulation Mode	Coarse Mode
-------------	-------------------	-------------

composition  
sulfate  
nitrate  
ammonium  
chloride  
carbonate  
sodium  
calcium  
other inorganics  
organic carbon  
elemental carbon

## (2) Sectional



(3) Bulk: Sections for dust and sea salt, otherwise total mass only

Aerosols may have a significant impact on weather forecasts through interaction with radiation (sometimes also called “direct effect”) and microphysics (sometimes also called “indirect effect”)

Aerosols may also impact meteorological data assimilation



# For NWP a bulk scheme is very attractive: GOCART (Currently used in real-time high resolution global ( $dx=30km$ ) and regional modeling (up to $dx=3km$ ) at ESRL

- Much simpler than the sectional and modal schemes
  - Calculates only with the total mass of the aerosol components
  - Provides no information on
    - Particle size
    - Particle concentration
  - E.g., when particles grow, the aerosol mass increases but we don't know how their size/number changes
- Numerically very efficient
- Coupled with radiation (Mie scattering and extinction calculations)
- Will be coupled to microphysics in future versions



# For research on aerosol direct and indirect effects modal and sectional approaches are more attractive

Less assumptions are made when coupled to atmospheric radiation and/or microphysics

**Interaction processes are very complex, they will not work for every radiation and microphysics scheme in WRF ! (takes time to implement)**



# Examples of available Aerosol Modules

- Bulk: GOCART
- Modal: MADE/SORGAM (3 modes)
- MAM (Modal Aerosol Model from NCAR Climate model)
- MOSAIC (Sectional)



# **Selection of radiation parameterizations for aerosol “direct effect”**

Since V3.5 all aerosol modules were hooked up to Goddard short wave radiation, and RRTMG short and long wave scheme, CAM radiation.



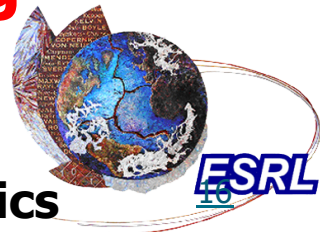


# Selection of microphysics parameterizations for aerosol “indirect effect”

Since V3.6

**Modal** and **sectional** schemes only  
can be used in combination with a  
version of the **Lin et al.** Microphysics  
scheme as well as the **Morrison**  
scheme

**Special physics choice available when using  
NCAR community climate model physics**



“indirect effect” is a result of the interaction aerosols/microphysics

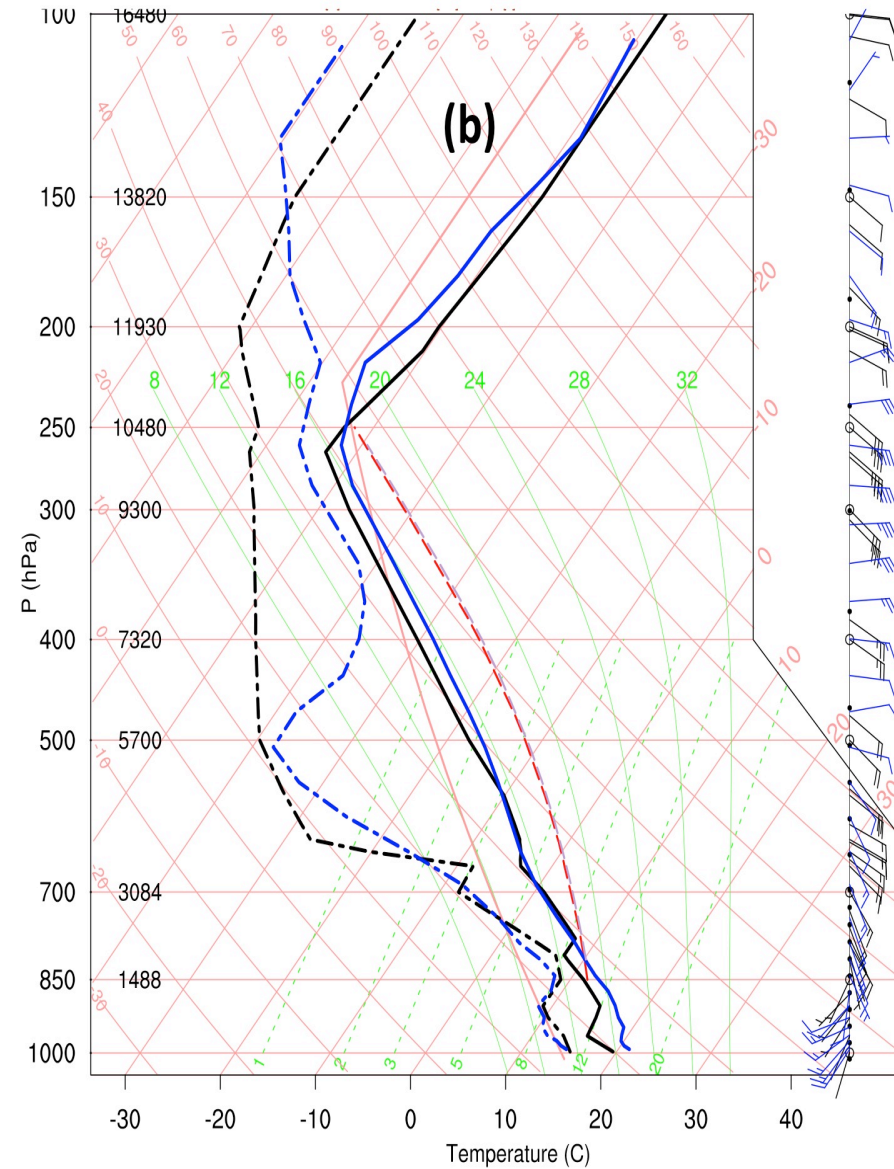
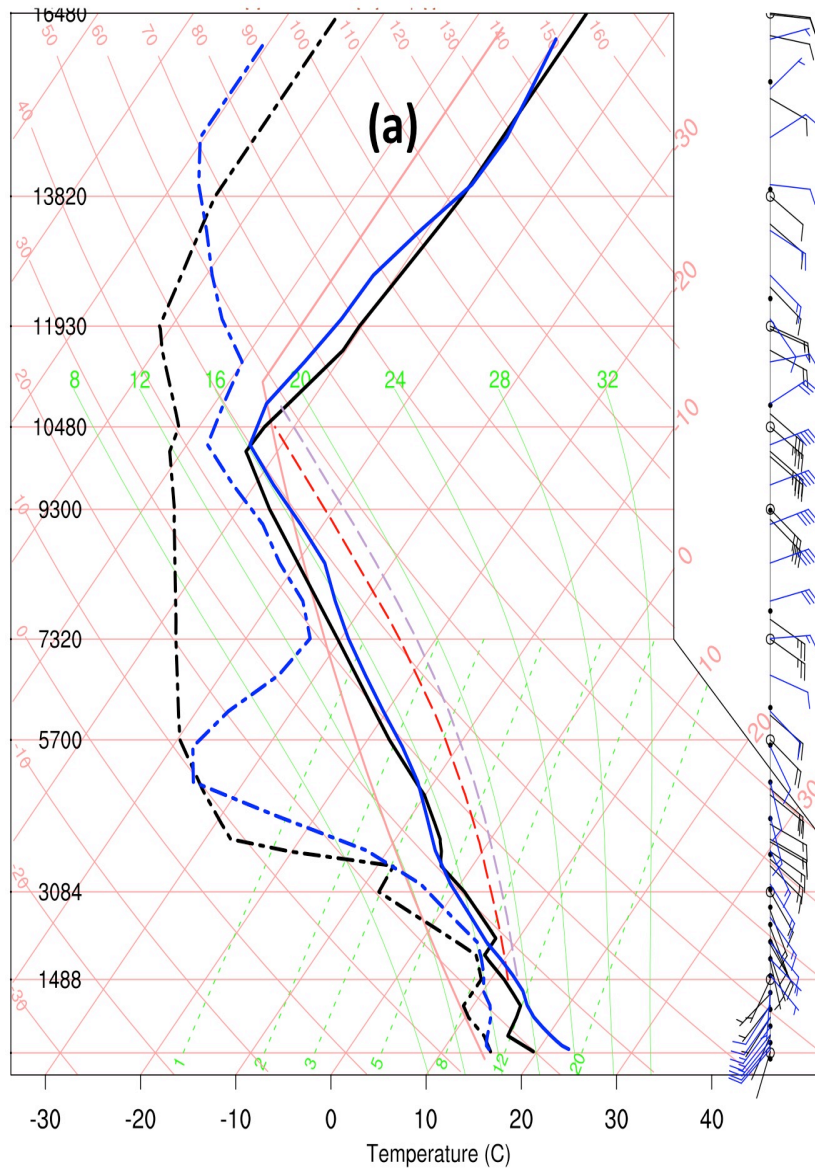
# How is the meteorological forecast affected by aerosol?

- Large importance for climate simulations is recognized (when integrating models over 100's of years, small differences in the earth's energy budget are extremely important)
- Weather forecasting for only a few days?
  - Much research needed, but chemistry may positively influence forecasts when strong signals exist
  - Influence on meteorological data assimilation

**No fires**

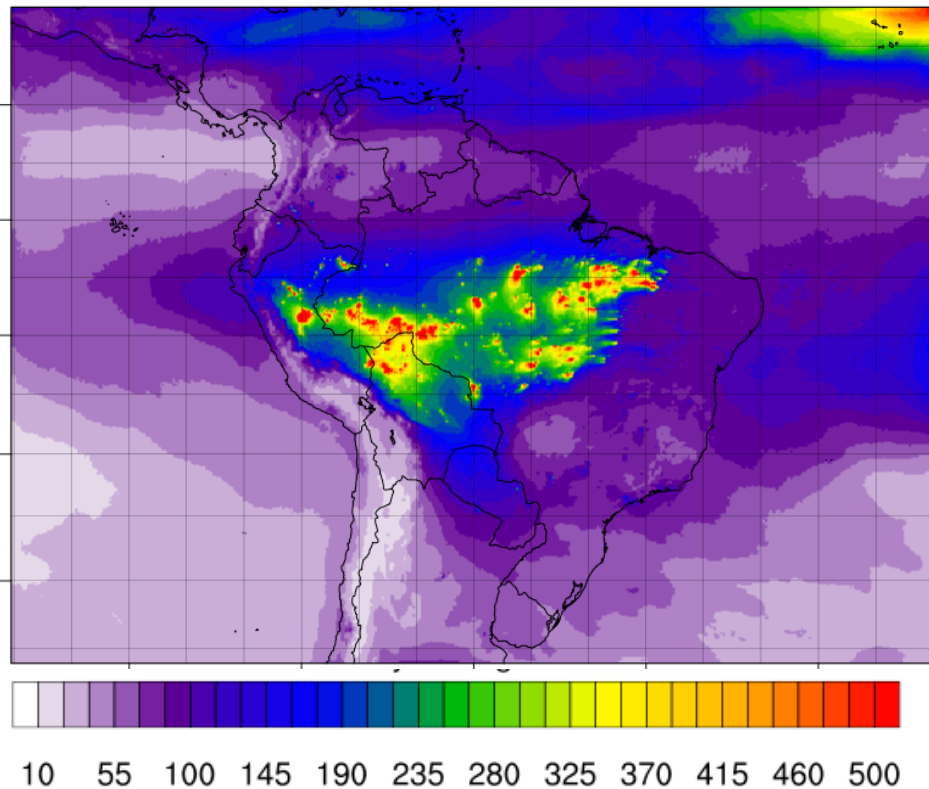
**24-hr forecast**

**With fires**

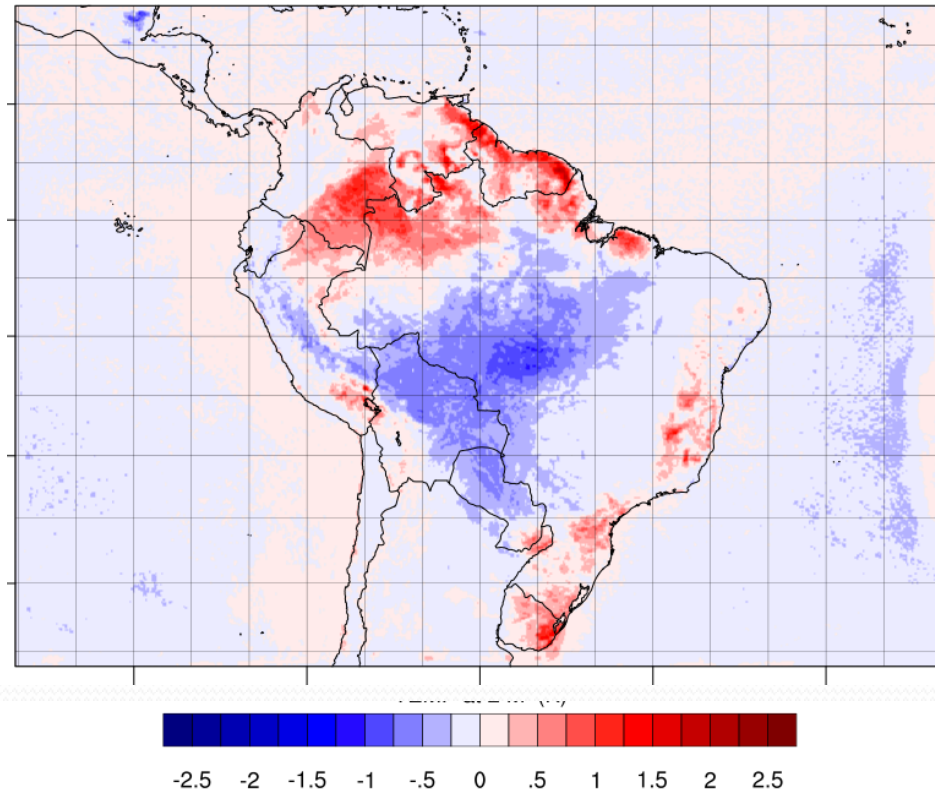


Observed (black) and predicted (blue) sounding for Fairbanks, Alaska, on July 4, 0000UTC.

## Vertically summed PM2.5



## WRF-Chem minus WRF, T2M difference at 12Z



Averaged total burden PM2.5 (left) and temperature differences at 12Z, 20 WRF-Chem runs, dx=15km, 72 hour forecasts



# Biogenic emissions

- May be calculated “online” based on USGS landuse
  - Easy to use
- May be input
- BEISv3.13 (offline reference fields, online modified)
  - Good choice, but difficult to use
- **Use of MEGAN**
  - **Best choice!!**

# **Model of Emissions of Gases and Aerosols from Nature (**MEGAN**)**

Global, high resolution biogenic emissions

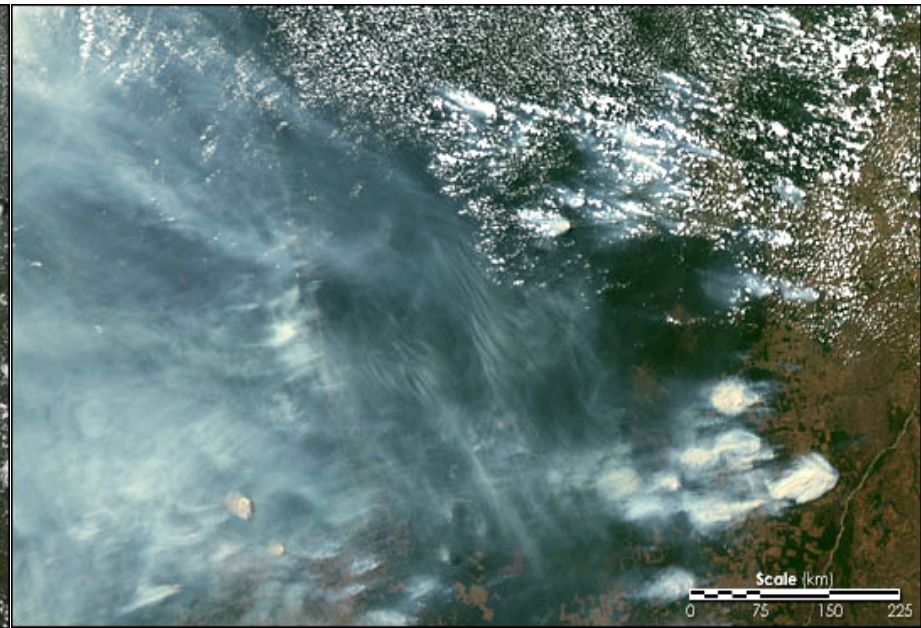
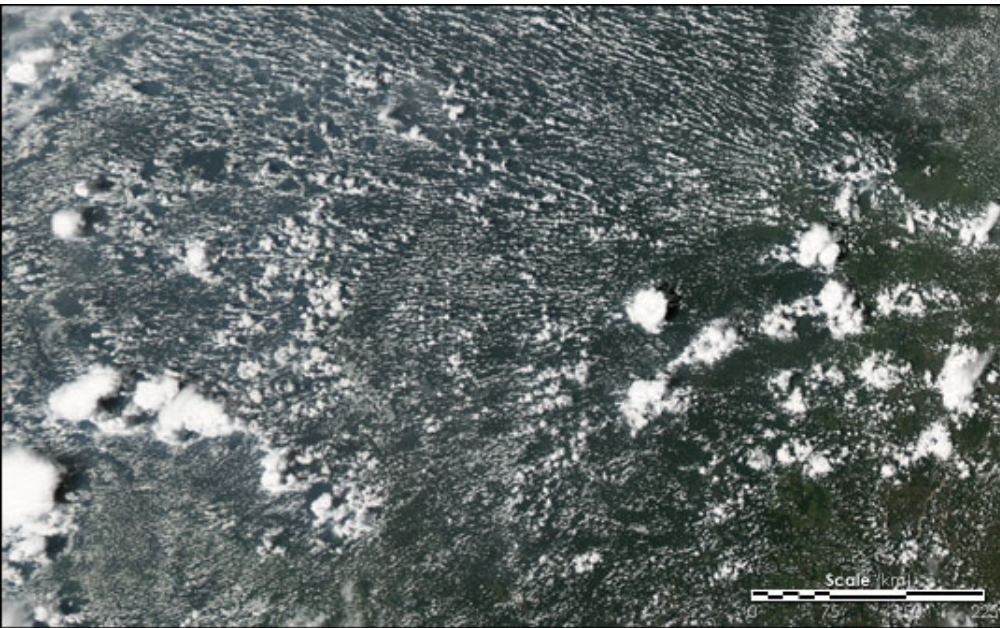
Out of available biogenic emissions modules only  
BEIS and MEGAN are actively being worked on  
(developed)

**Preprocessor for MEGAN exists and can be  
downloaded from NCAR**

# Fire Plumerise

- 1-D Cloud model used in WRF-Chem to determine injection height, wind shear effects are included
- Satellite information (other aerial and ground observations may also be used) to determine fire location and fire properties
- Emissions preprocessing may be done by (1) CPTec preprocessor, or (2) NCAR's FINN preprocessor

**Soon to come: Use of Fire Radiative Power and VIIRS Satellite data**





## Impact of Volcanoes

- Ash-fall near eruption
- Transport of fine ash in high concentrations for long distances
- Impact on weather, climate, and air quality



The plume of the 30 Sept/1 Oct 1994 eruption of Kliuchevskoi Volcano, Kamchatka taken from the space shuttle STS-68 mission (Russia)

# 10 size bins for prediction of **ash-fall** and transport of volcanic ash

Particle Size Bin	Phi	Percentage of mass
1 – 2mm	-1 – 0	2
0.5 – 1 mm	0 – 1	4
0.25 – 0.5 mm	1 – 2	11
125 – 250 $\mu\text{m}$	2 – 3	9
62.5 – 125 $\mu\text{m}$	3 – 4	9
31.25 – 62.5 $\mu\text{m}$	4 – 5	13
15.625 – 31.25 $\mu\text{m}$	5 – 6	16
7.8125 – 15.625 $\mu\text{m}$	6 – 7	16
3.9065 – 7.8125 $\mu\text{m}$	7 – 8	10
< 3.9 $\mu\text{m}$	> 8	10

- Options for transport only (4 bins or 10 bins +so2) – aerosol direct effect may be included
- Coupled with chemistry/aerosol modules (only using up to three bins – depending on size)

## 4 size bins for prediction if transport only is of interest

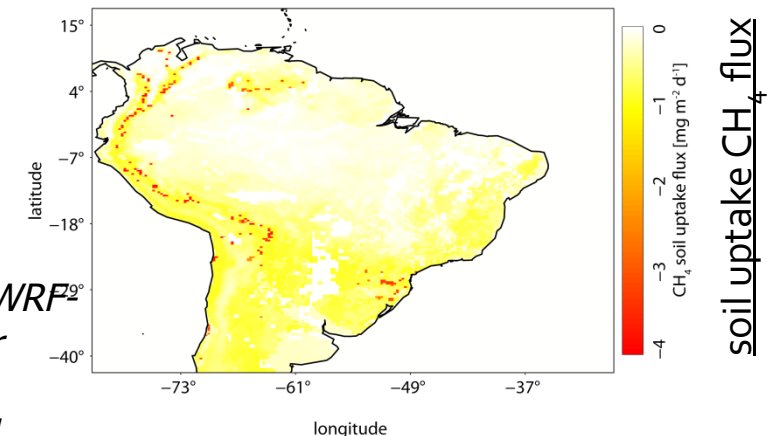
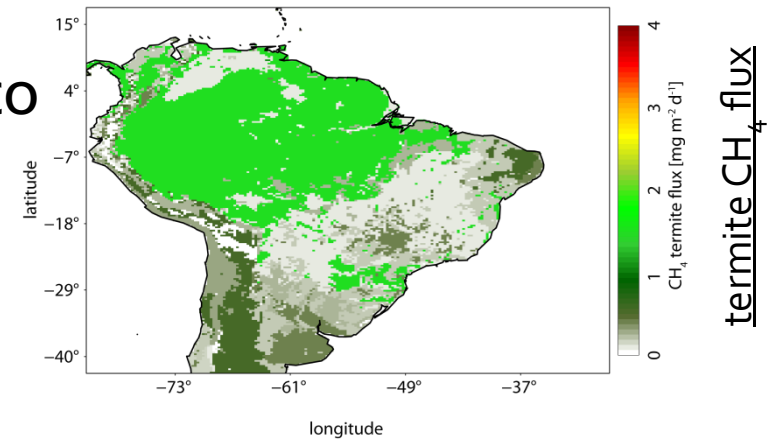
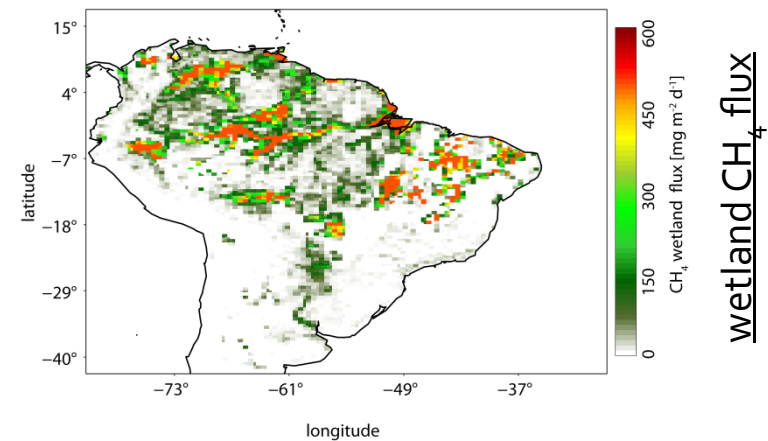
Particle Size Bin	Phi	Percentage of mass
15.625 – 31.25 $\mu\text{m}$	5 – 6	16
7.8125 – 15.625 $\mu\text{m}$	6 – 7	16
3.9065 – 7.8125 $\mu\text{m}$	7 – 8	10
< 3.9 $\mu\text{m}$	> 8	10

3 size bins for coupling with other aerosol modules

# WRF-Chem Greenhouse Gas Packages

(*chem\_opt = 17*)-new in WRF-ChemV3.4

- **Online calculation of biospheric  $\text{CH}_4$  fluxes**  
 wetland – Kaplan (2002)  
 termite – Sanderson (1996)  
 soil uptake – Ridgwell et al. (1999)
- **Passive tracer simulations for  $\text{CO}_2$ ,  $\text{CH}_4$ , and CO**  
 (including all options of  $\text{CO}_2$  tracer package, *chem\_opt=16*)
- **Tuning of wetland fluxes** through namelist options *wpeat* and *wflood* possible
- **Separate biomass burning option** for  $\text{CO}_2$ ,  $\text{CH}_4$ , and CO including plumerise calculation (*biomass\_burn\_opt = 5*)
- **Detailed description**  
*Beck et al., (2011): The WRF Greenhouse Gas Model (WRF<sup>2</sup> GHG) Technical Report No. 25, Max Planck Institute for Biogeochemistry, Jena, Germany, available online at <http://www.bgc-jena.mpg.de/bgc-systems/index.shtml>*



# Direct connection to NCAR's climate modeling system: Implementation of the Community Atmosphere Model version 5 (CAM5) Physics/Chemistry

- ▶ Includes different physics options for deep and shallow convection, microphysics, boundary layer
- ▶ **Aerosols:** *Liu et al.* (GMD, 2012), Modal Aerosol Model (MAM)
- ▶ **Gas-Phase Chemistry:** MOZART used by “CAM-Chem” already implemented in WRF-Chem by NCAR
- ▶ **PNNL** has coupled MAM with CBM-Z photochemistry in WRF-Chem

*overview paper of  
CAM5 and coupling  
of these  
parameterizations  
(Rasch et al., 2013)*

**This Climate Model package also includes aerosol direct and indirect effect, but is **limited on combinations with other packages****

Several dust and sea-salt models, used for bulk, modal, and sectional approaches

Lightning parameterization for NO<sub>x</sub> emissions

Aerosol interaction with convective parameterization is currently evaluated in Grell-Freitas scheme (maybe released in V3.8.1)

# University of Manchester: completed developments (Lowe et al.) was added in WRF-Chem 3.6

- Common Representative Intermediate Mechanism (CRIMech) (CRlv2-R5; 240 species, 652 rxns) (Watson et al., 2008)
- $\text{N}_2\text{O}_5$  heterogeneous chemistry in WRF-Chem sectional aerosol (Bertram & Thornton, 2009)
- Sea-spray emission scheme with organics (Fuentes et al., 2011)
- Organic Partial Derivative Fitted Taylor Expansion (PD-FiTE) added to MOSAIC sectional aerosol (Topping et al., 2009; 2012)

Douglas Lowe, Steven Utembe\*, Scott Archer-Nicholls, David Topping, Mark Barley, Gordon McFiggans

# Chemical data assimilation

- NCEP's Grid Point Statistical Interpolation (GSI, 3DVAR) assimilation system can be used with surface chemical data as well as with AOD: Significant improvements in forecasts.
- EnKF assimilation system has been used for WRF-Chem
- Work is on-going with hybrid EnKF/GSI system (ESRL and NCAR)
- Work is also ongoing with WRF-Chem adjoint development (project lead by Greg Carmichael)

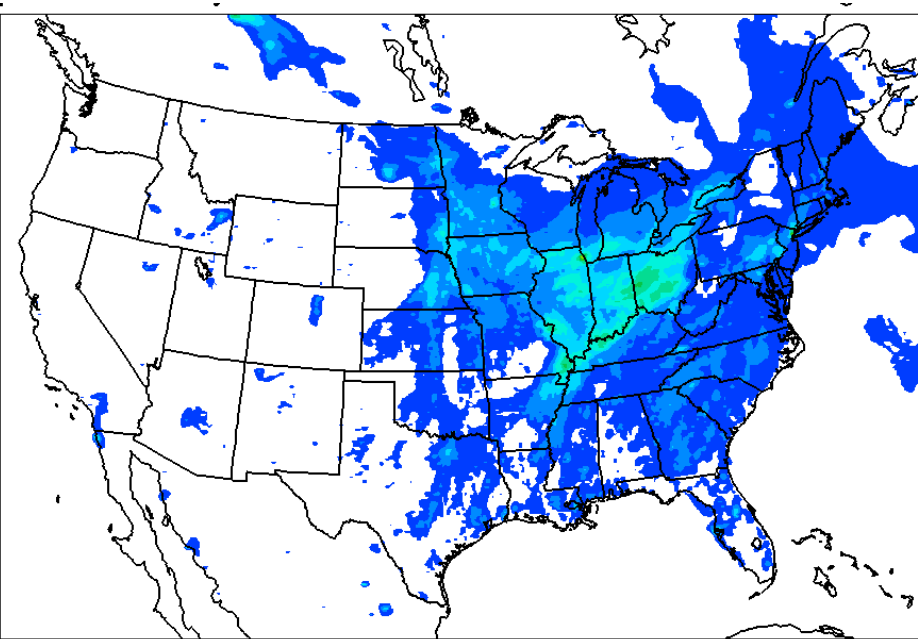
**These approaches are not released to community yet,  
but approaches with WRF DART system as well as  
the GSI are available**

Otherwise, if you need chemical data assimilation to help develop or use, email wrfchemhelp for contact information



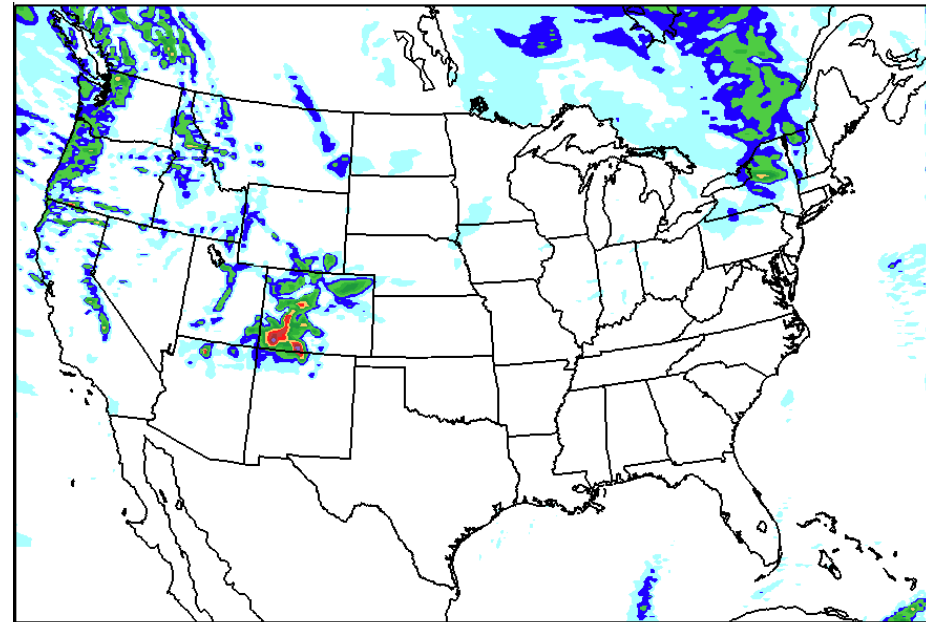
# Real-time AQ forecasting with WRF-Chem

[http://ruc.noaa.gov/wrf/WG11\\_RT/](http://ruc.noaa.gov/wrf/WG11_RT/)



0 5 10 15 20 25 30 35 40 45 50 55 60 65 70 75 80 85 90

PM2.5 at 00Z, Jan 31, 2016



0.1 1 2.5 5 7.5 10 12.5 15 17.5 20 25 50 75

3-hr precip at 00Z

WRF-Chem using MADE/VBS/RACM on Rapid Refresh  
Domain, DX=13km

# HRRR-Smoke: 3km horizontal resolution

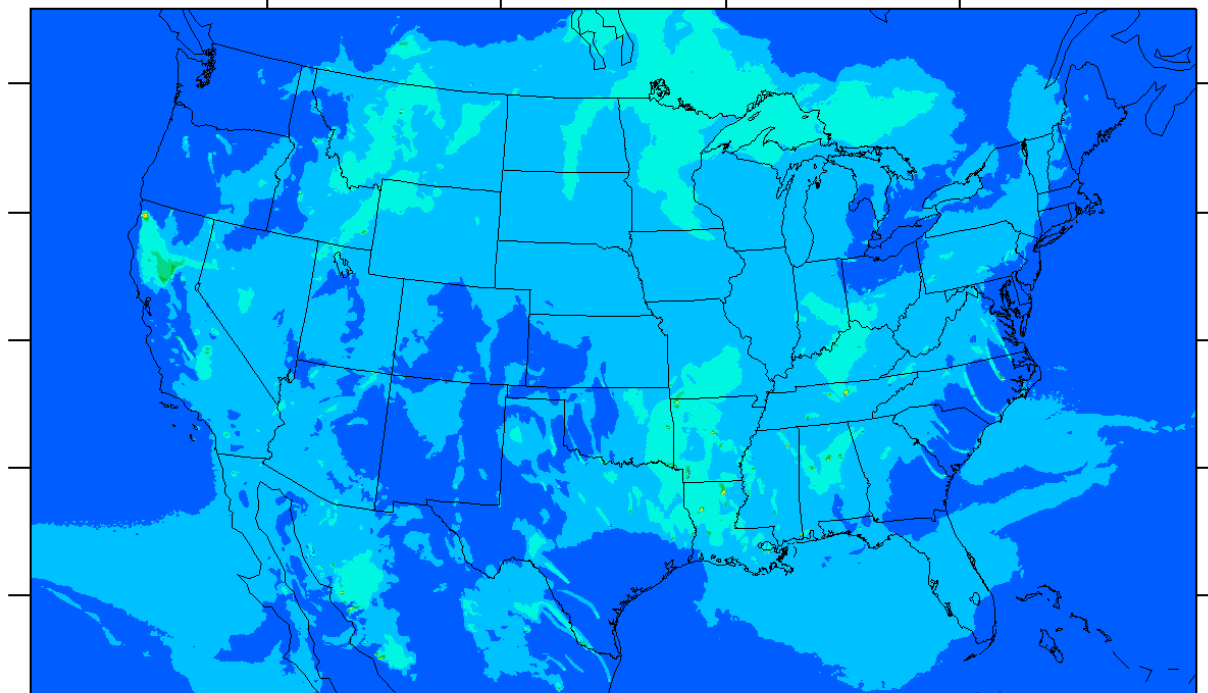
**VALID: 2015-07-27\_06:00:00**

Surface level smoke  
120°W

105°W

90°W

75°W



120°W

110°W

100°W

90°W

80°W



0 0.001 0.01 0.1 0.2 0.5 0.7 1 2 5 7 10 20 50 70 100

# Resources

- WRF project home page
  - <http://www.wrf-model.org>
- WRF users page (linked from above)
  - <http://www.mmm.ucar.edu/wrf/users>
- WRF users help desk
  - [wrfhelp@ucar.edu](mailto:wrfhelp@ucar.edu)
- WRF-Chem users help desk
  - [wrfchemhelp.gsd@noaa.gov](mailto:wrfchemhelp.gsd@noaa.gov)
- Publications (please send us yours)
  - <http://ruc.noaa.gov/wrf/WG11/References/WRF-Chem.references.htm>

**Inter-journal special issue on WRF-Chem now  
also opened: ACP and GMD**

**Thank you for your interest, Questions?**