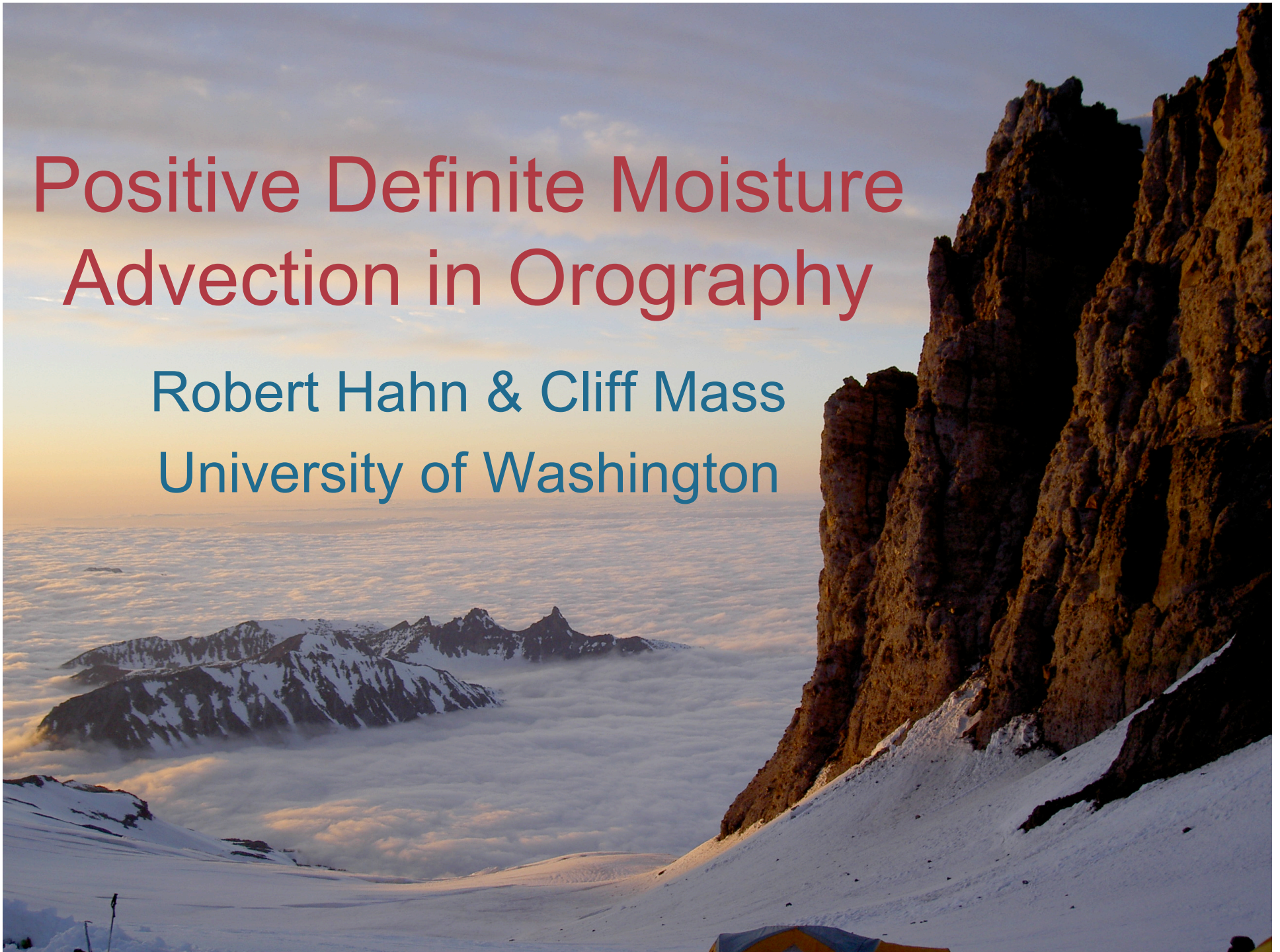


# Positive Definite Moisture Advection in Orography

Robert Hahn & Cliff Mass  
University of Washington

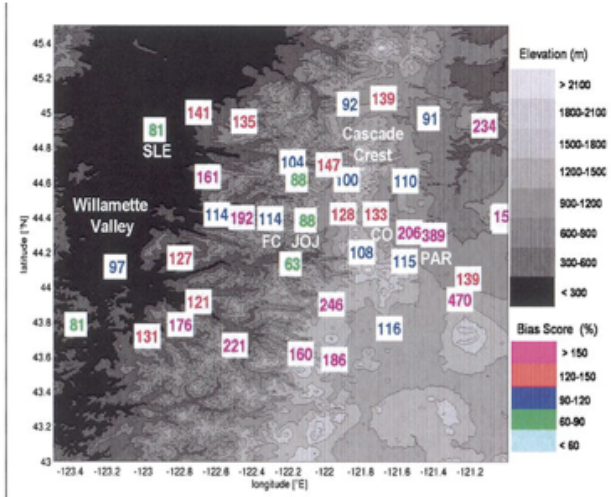


# Why Positive Definite?

- Numerous investigators have found biases in precipitation and mixing ratio fi

Bias Scores For MM5  
1.33-km

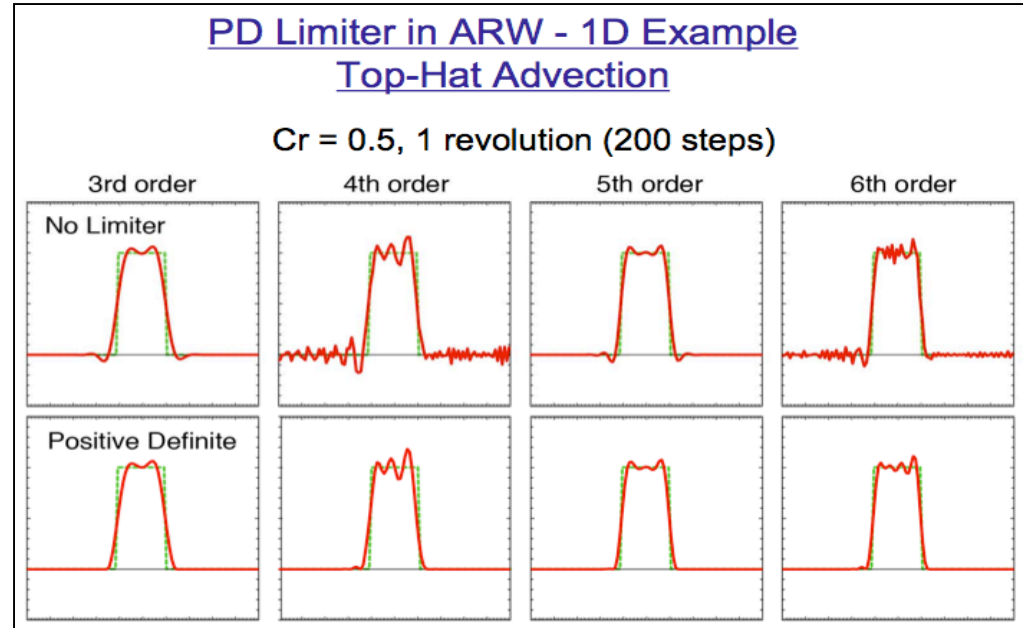
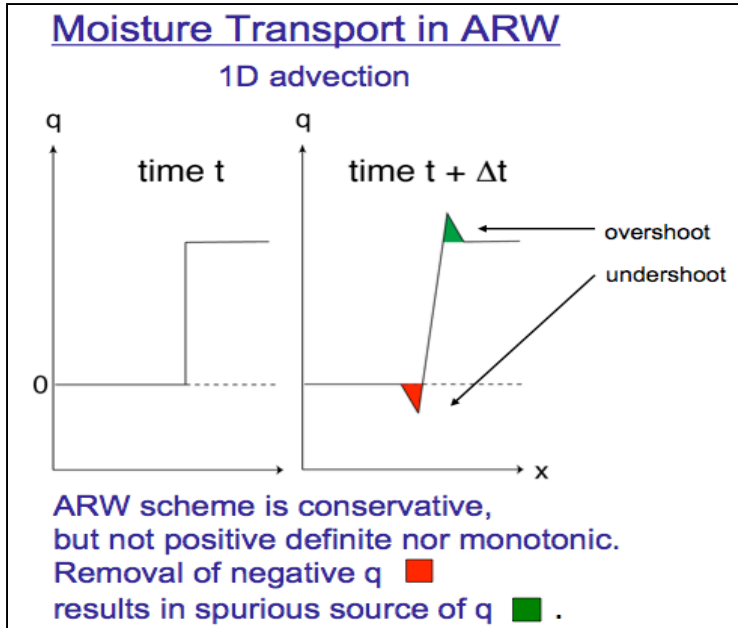
$$\text{Bias Score} = \left( \frac{\text{Modeled Precip.}}{\text{Observed Precip.}} \right) \bullet 100$$



- Until recently, mesoscale weather models did not conserve moisture because of overlooked numerical challenges in advection schemes.
- This presentation illustrates the effects of the recently-introduced positive definite moisture advection scheme in WRF at high spatial and temporal resolution.
- With an understanding of changes in model numerics, we will renew investigation of the microphysics schemes themselves.



# Advection Schemes



- Advection schemes can introduce both positive and negative errors, particularly when there are sharp gradients.
- This becomes significant when dealing with microphysical quantities because some moisture values can have sharp edges where the quantity goes to zero.
- When negative mass values are generated, models often reset or 'clip' these values to zero and moisture is added to the model, artificially.
- Positive Definite (PD) Advection schemes eliminate non-physical generation of negative values, while conserving mass (see figure).

\*graphics from a presentation by Morris Weisman

# Previous Studies

- Numerical errors in a 2-km MM5 simulation of Hurricane Bonnie contributed a mass equivalent to 13% of total condensation and 15-20% of the precipitation associated with 'clipping' of negative mixing ratios (Braun et al., 1998)
- Skamarock (2005) positive definite limiter in WRF.
- For convective cases, Skamarock & Weisman (2008) found
  - PD scheme reduces precipitation by ~15%.
  - The majority of the spurious water is added in the cloud field.
  - The PD scheme reduces positive bias most effectively for larger rain events (>1/2 inch).
- Lin & Colle (2008) investigated the aggregate effects of the PD scheme for the 4-5 December 2008 event.
  - The Non-PD run generated 25-45% more precipitation over the coast range and 10% more precipitation over the cascades. Mixing ratios for non-PD runs are increased by ~10-20%.
  - The non-PD run also generates more precipitation than there are available water sources. PD corrects this problem.



# Why Orography?



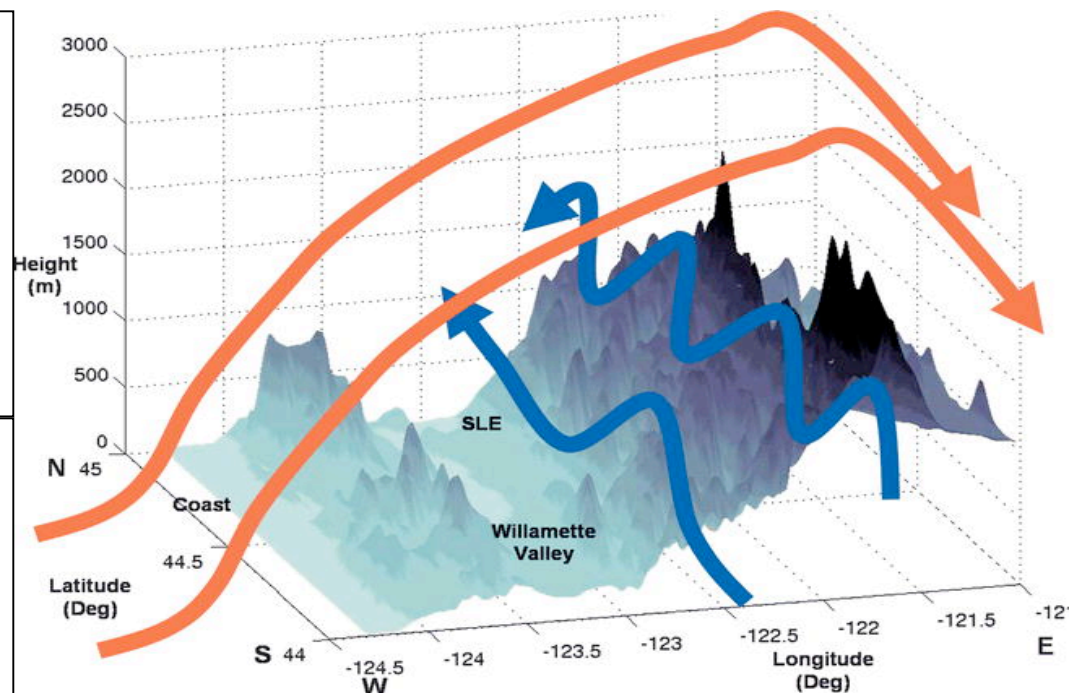
- Theory indicates that PD should have its greatest effect where large gradients in moisture species are present.
- Both convection and orography induce such large gradients in many microphysical fields.
- Orography also provides temporal stability of the flow pattern and associated microphysical fields, making it ideal for examining the generation of spurious sources of mass in a real-time simulation.

# December 13-14 Case

- A unique data assets from the IMPROVE-II field campaign has permitted microphysical investigation since 2001 by Garvert, Colle, Woods and others.
- Vigorous synoptic and orographic forcing combine to make this case ideal for the study of PD advection.

Garvert et al. (2007) found that while broad upward motion is associated with the orographic barrier, alternating upward and downward motions are prevalent as well.

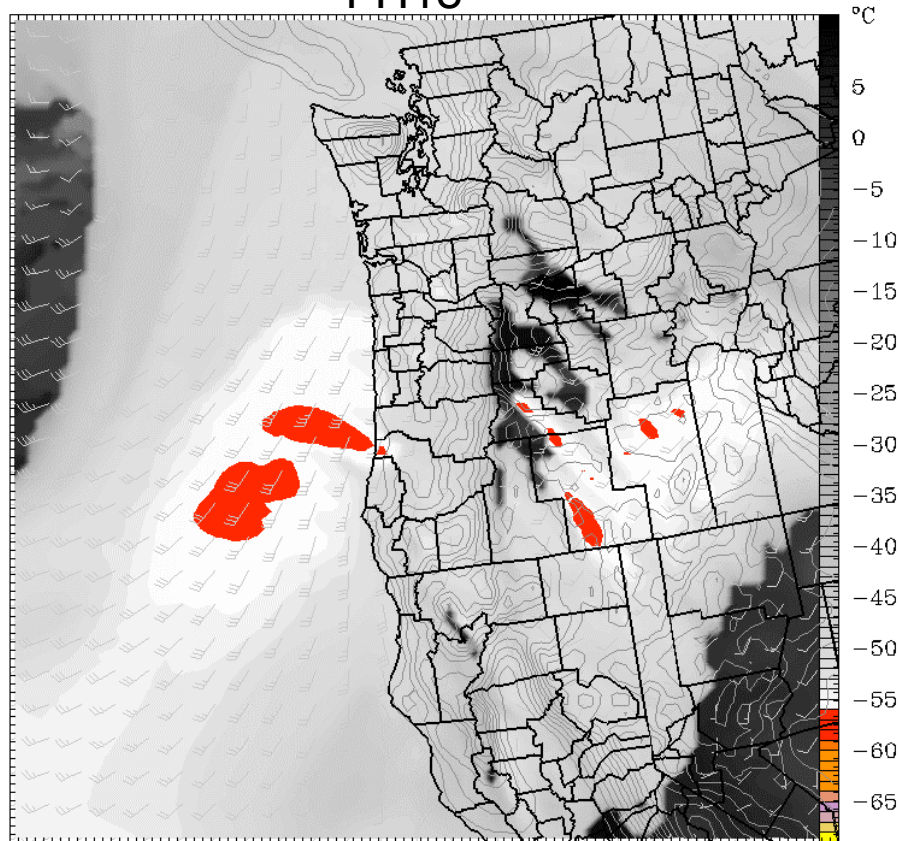
Microphysical quantities responded to the induced vertical motions, creating sharp gradients in moisture.



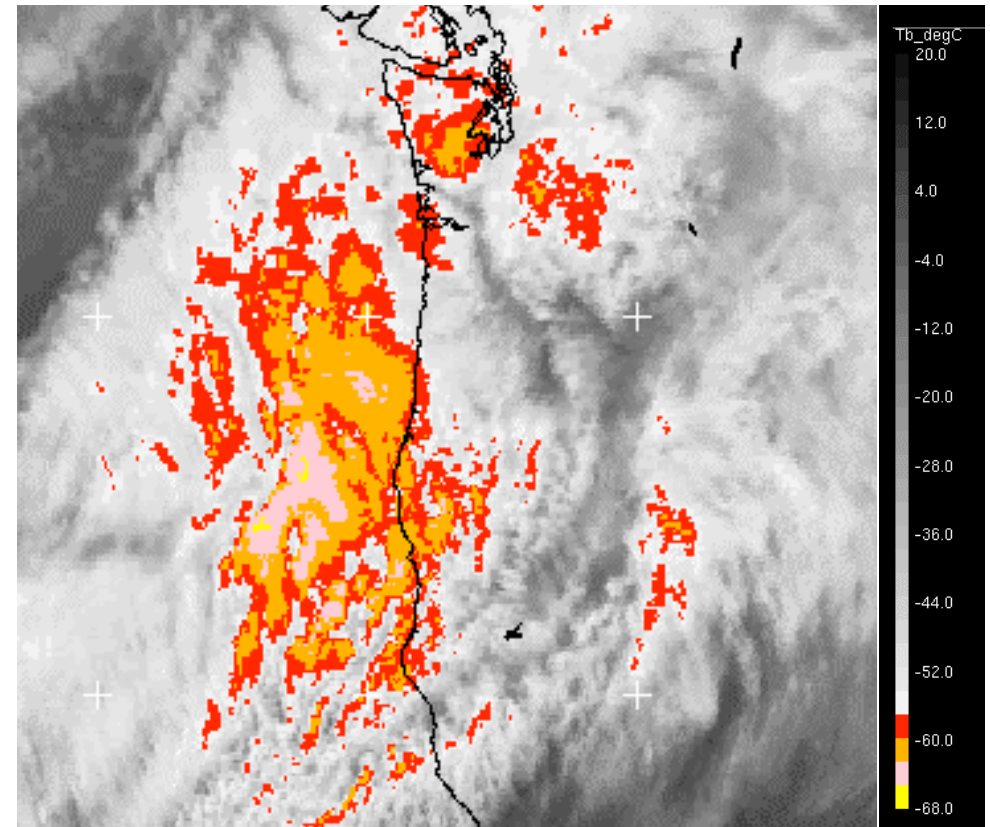


# Synoptics: 13-14 December 2001

WRF (NOPD) CLOUD  
TOP TEMPERATURE:  
FH18

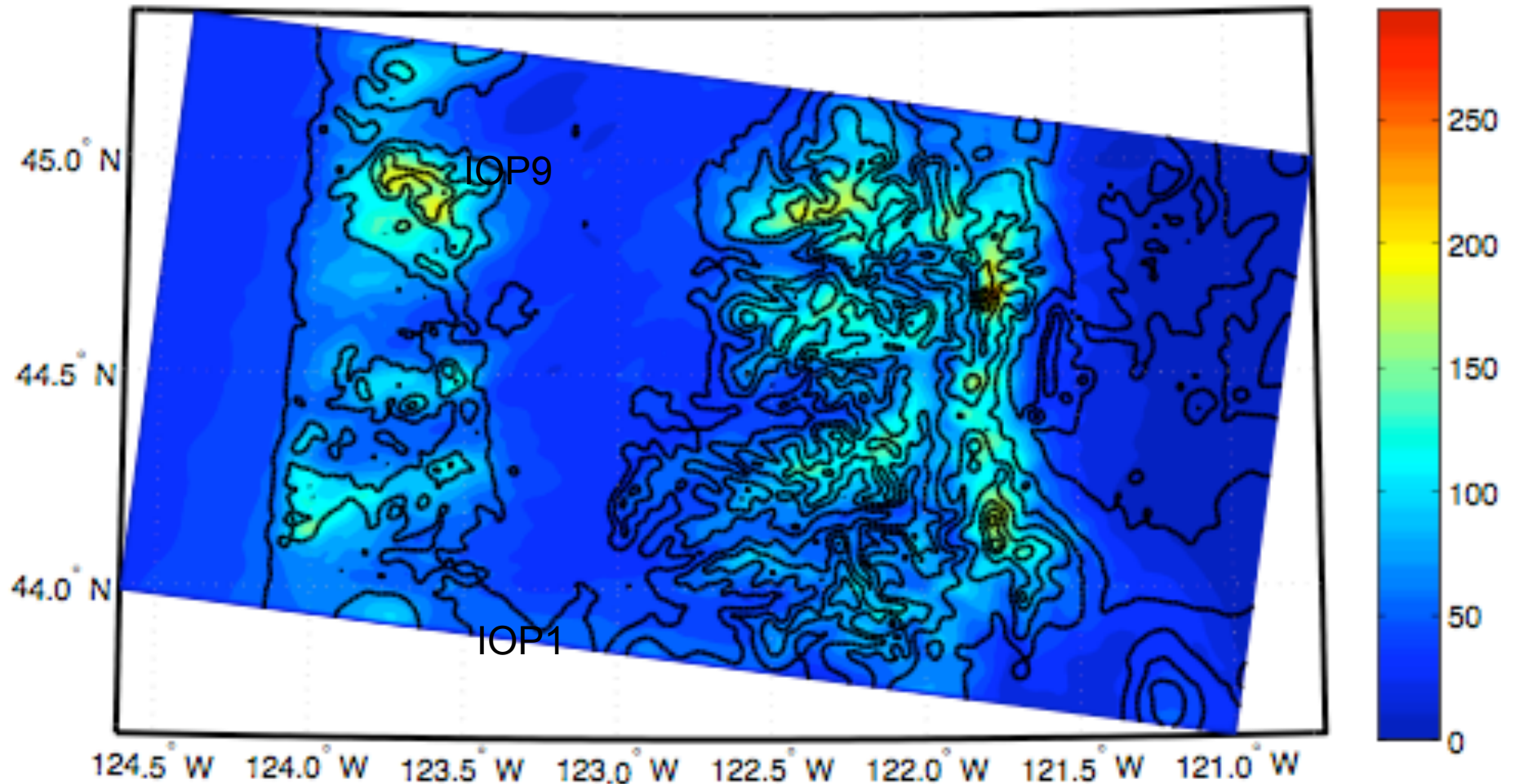


SATELLITE CLOUD TOP  
TEMPERATURE: FH18

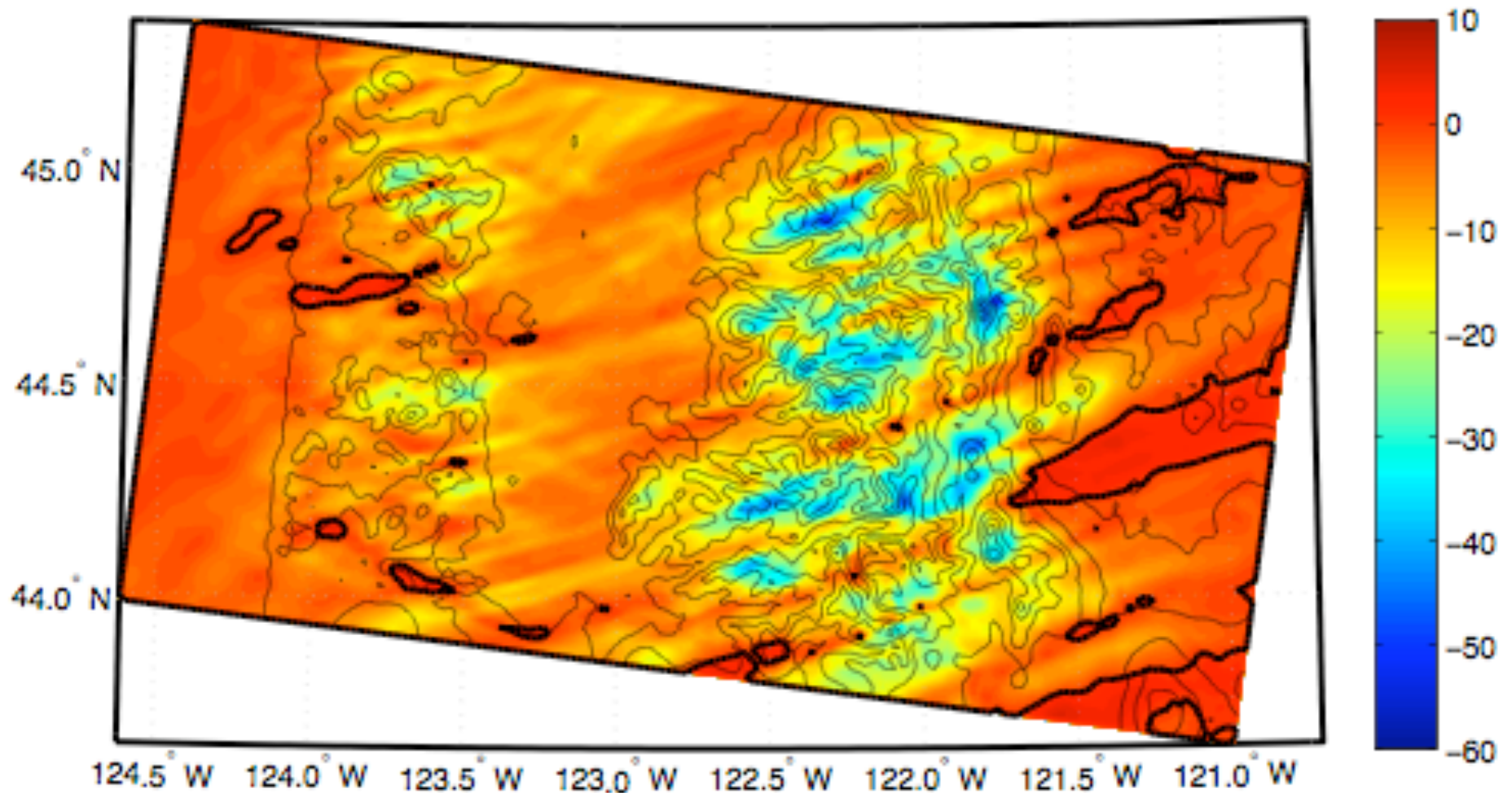




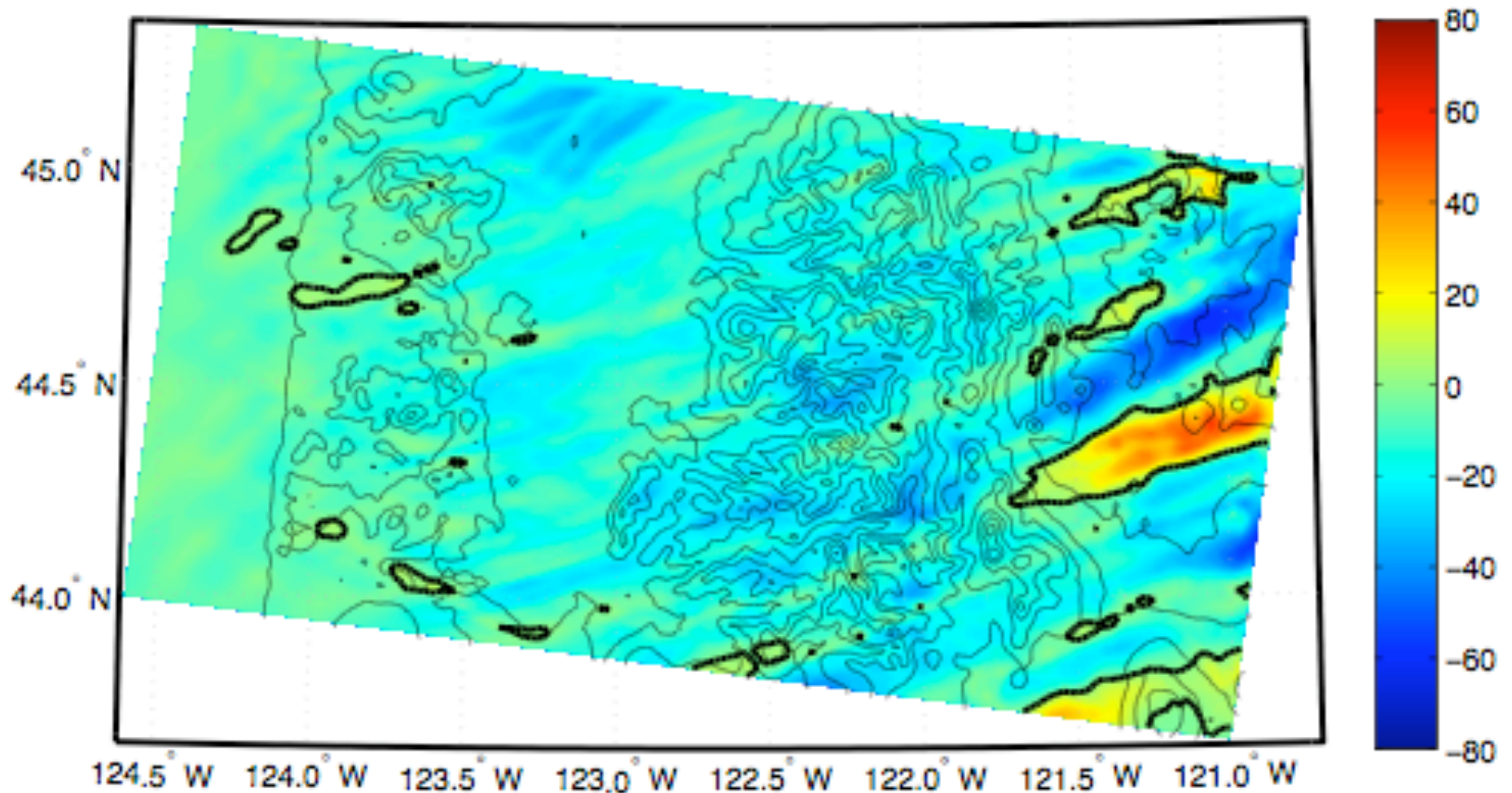
# 36-hr Accumulated Precip: 1.33-km Grid (PD applied)



# 36-hr Accumulated Precip (mm): PD-NOPD 1.33-km Grid



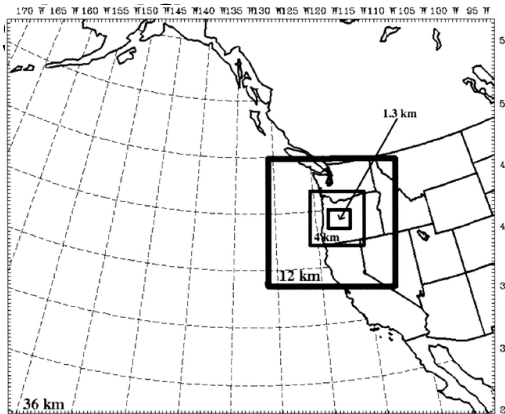
# 36-hr Accumulated Precip: %Diff PD-NOPD 1.33-km Grid



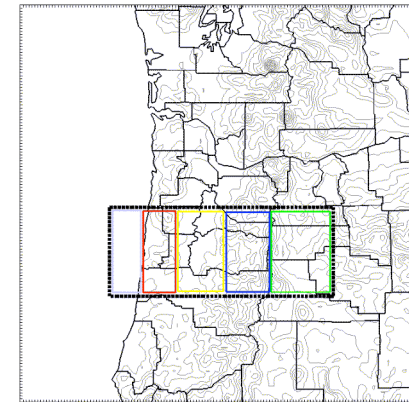


# Statistics: Percentage Difference

- Areas with orography tend to be affected more at coarser grid resolution.
- Grid spacing increases % Difference.
- Even at the lowest resolutions, the effects are



36-, 12-, 4-, 1.33-km WRF domains for this case study (from Garvert et. al, 2005)

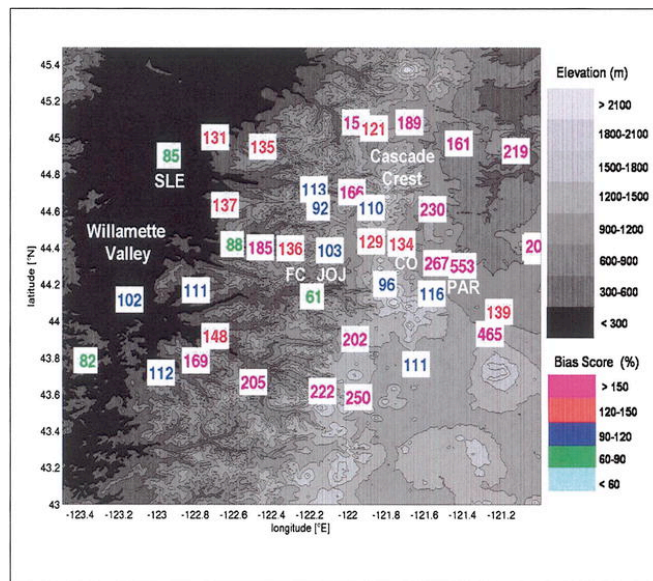


	Coastal Water	Coast Mountain	Willamett e Valley	Windward Slopes	Leeward Slopes	TOTAL
36km DOM	-3.4%	-3.8%	-4.0%	-4.9%	-12.6%	-5.9%
12km DOM	-2.5%	-4.5%	-4.1%	-7.2%	-13.6%	-6.1%
4km DOM	-8.4%	-8.9%	-15.4%	-18.7%	-16.1%	-14.6%
1.33km	-14.1%	-11.3%	-16.7%	-20.5%	-16.5%	-17.2%

# Model Grid Spacing

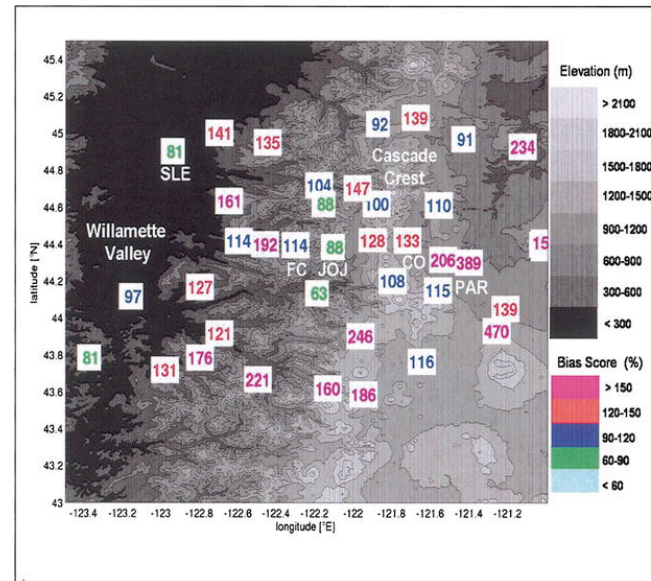
- This is an important point...the problem gets worse at smaller grid spacing.
- This explains some of the problems seen by Garvert et al. (2005) and others.
- Fig. 17. Bias scores for the (a) 1.33- and (b) 4-km model simulations for 1400 UTC 13 Dec 2001 through 0800 UTC 14 Dec 2001.

1.33km



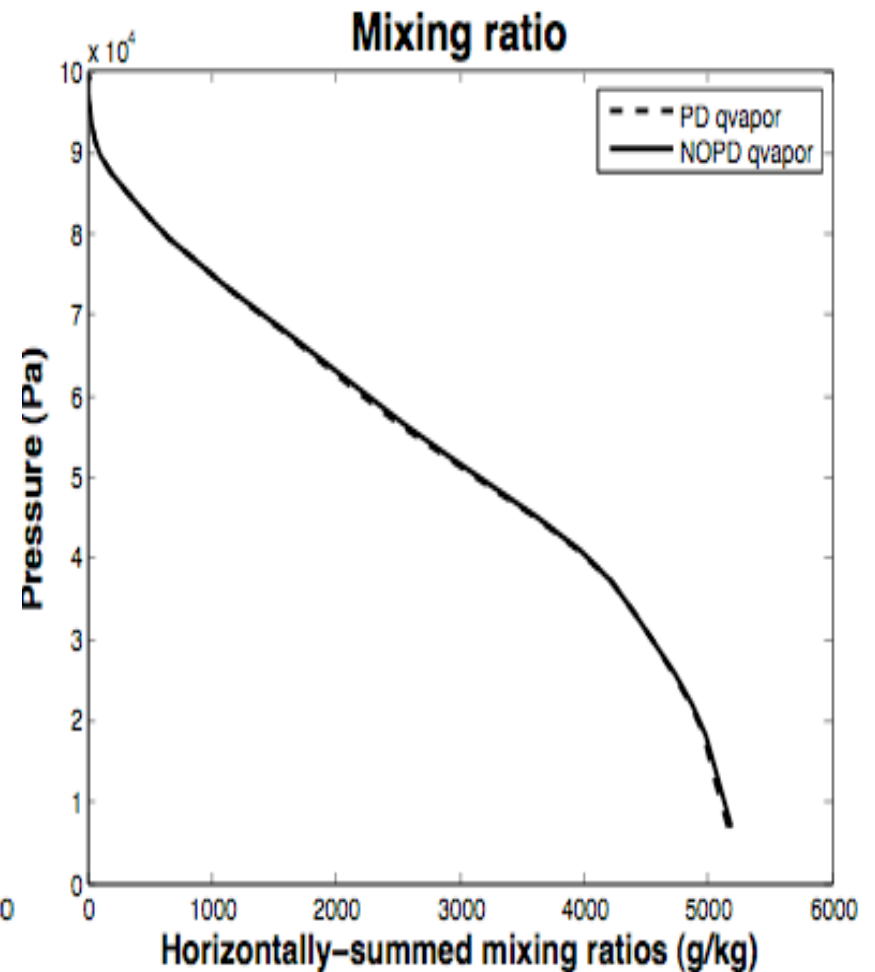
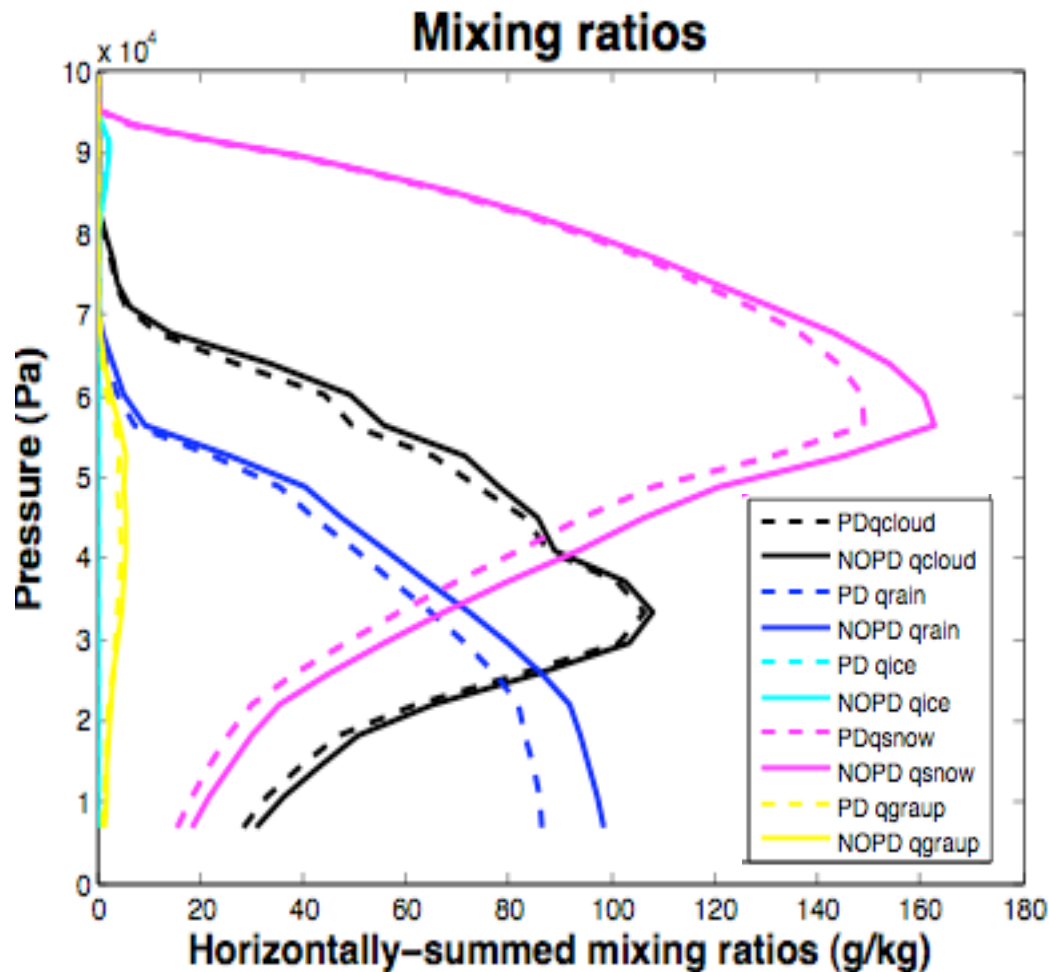
(a)

4km



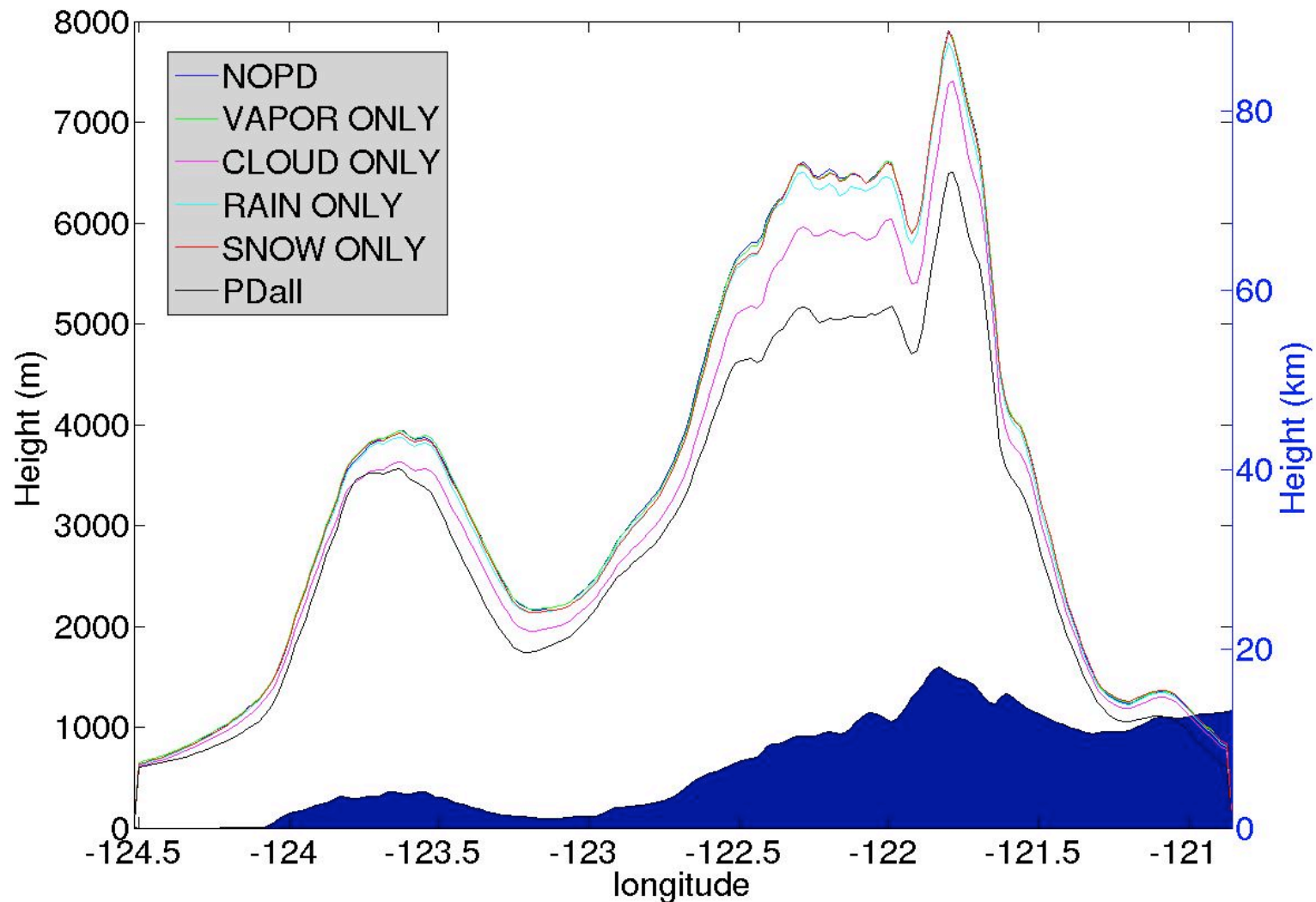
(b)

# Horizontally Summed Mixing Ratios





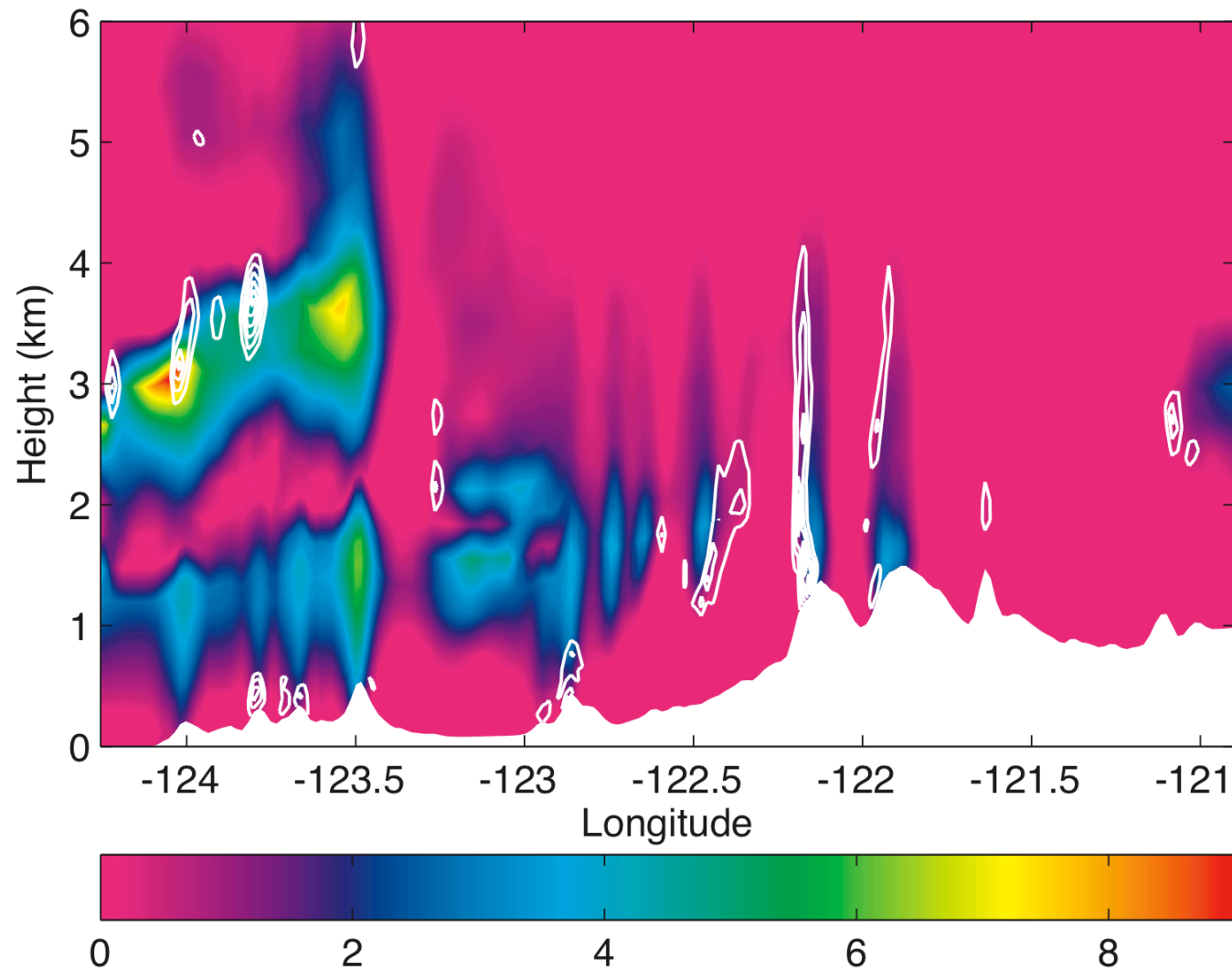
# PD applied to individual Hydrometeor Variables



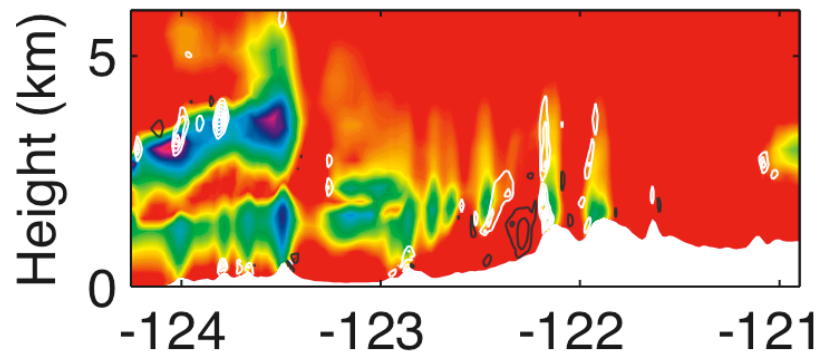
# CLOUD X-SECTIONS: PD

## CLOUD ONLY

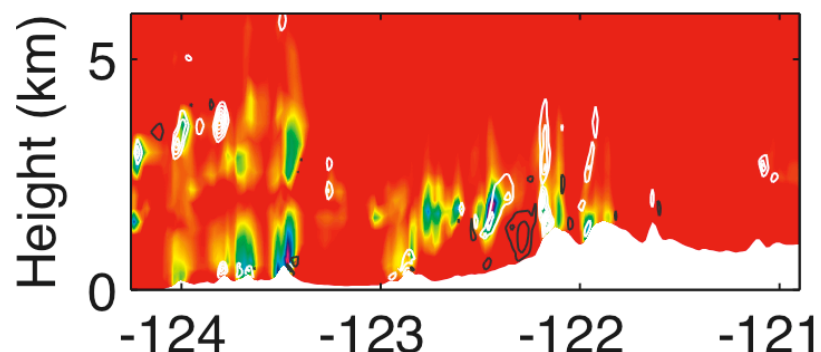
NOPD Qcl FH24:01



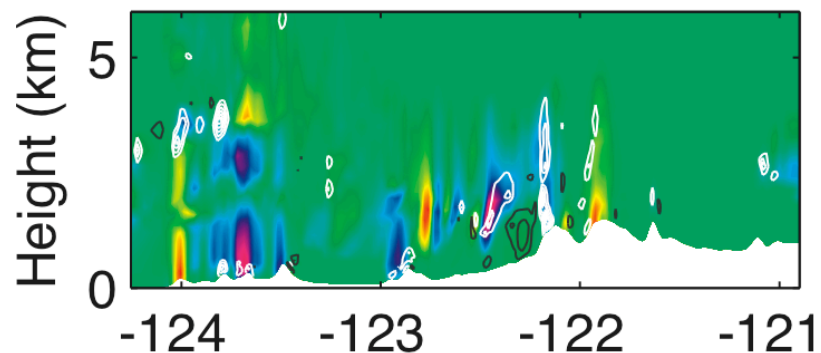
24:01 NOPD Qcl



24:01 TOTAL GRADIENT

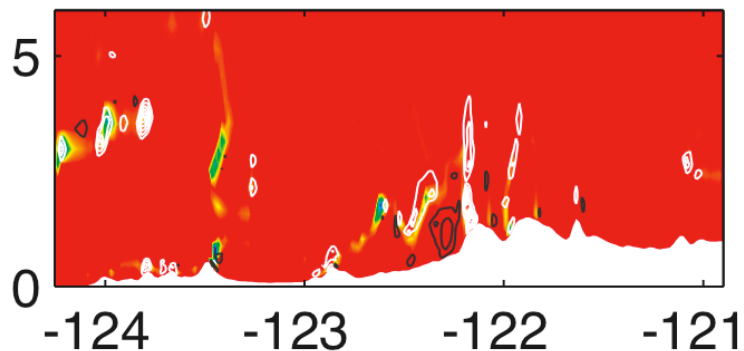


24:01 Y-GRAD int=5e-06

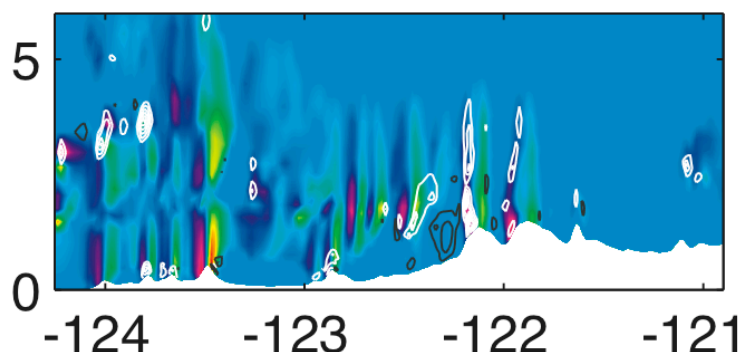


Longitude

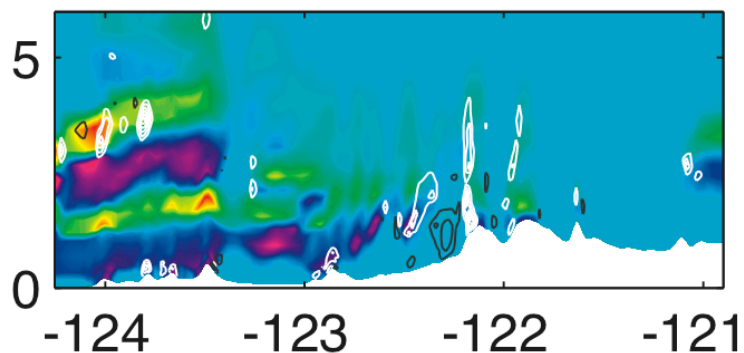
24:01 TOTAL GRAD at EDGES



24:01 X-GRAD int=5e-06



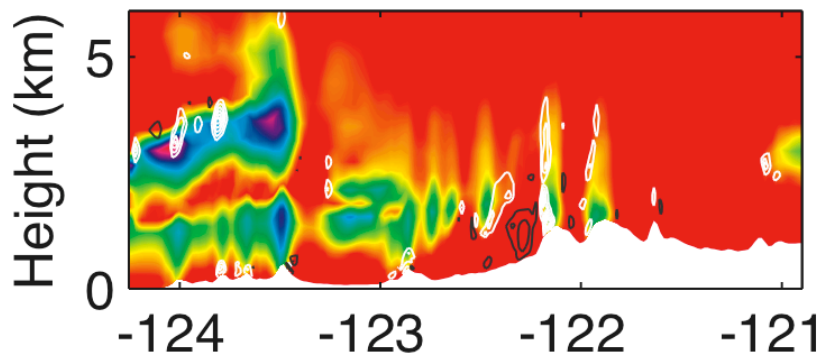
24:01 Z-GRAD int=5e-06



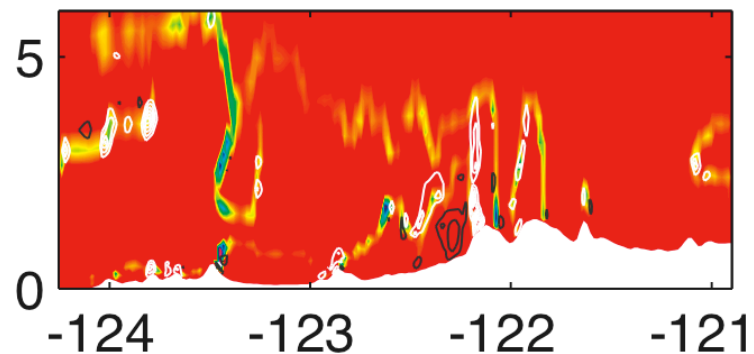
Longitude



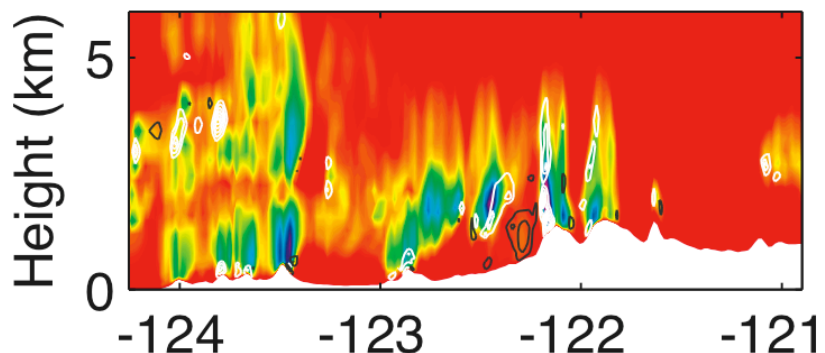
24:01 NOPD Qcl



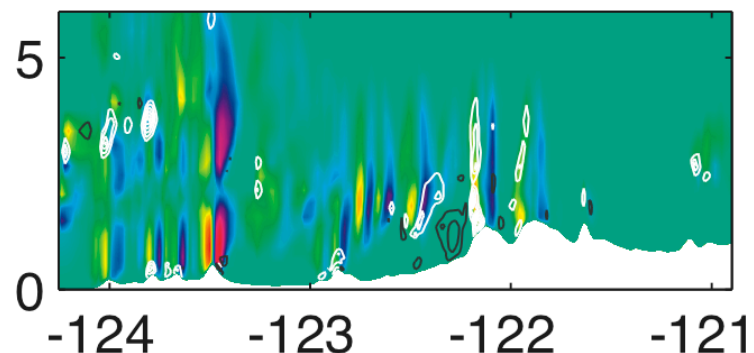
24:01 TOTAL ADV at EDGES



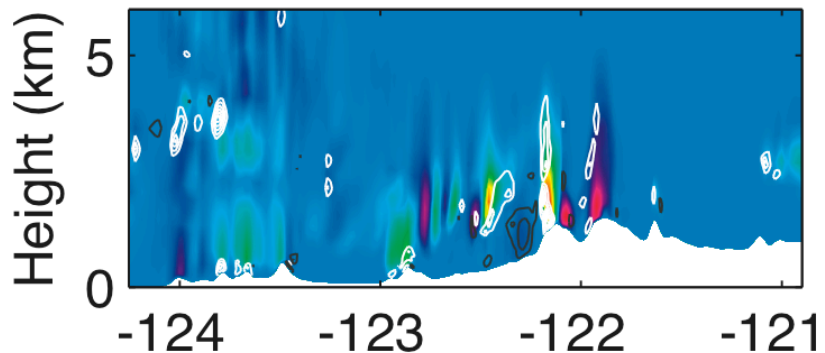
24:01 TOTAL ADVECTION



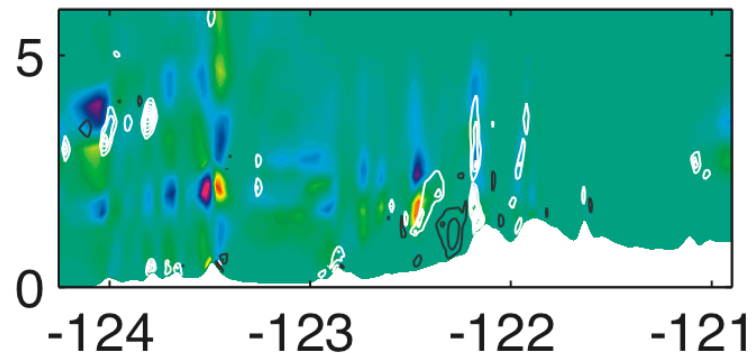
24:01 X-ADV int=5e-06



24:01 Y-ADV int=5e-06



24:01 Z-ADV int=5e-06



Longitude

Longitude

# Conclusions

- The PD moisture advection scheme removes a significant bias to the model and should be used in all mesoscale modeling applications where moist physics is involved.
- The effect of the PD scheme is significant at all resolutions modeled (36-->1.33km), but greater at higher resolution, where the largest effects were found over the Cascade Range.
- PD when applied to all variables significantly reduces moisture in all hydrometeor fields.
- The cloud field illustrates how the PD scheme removes spurious moisture generation near the edges of individual hydrometeor fields, where sharp gradients exist.
- PD paper coming soon...





The end!  
Any Questions?



# References

- Braun, S.A., 2004: High-Resolution Simulation of Hurricane Bonnie (1998). Part II: Water Budget. *J. of Atm. S.*, 63, 43-64.
- Garvert, M.F., Colle, B.A., and Mass, C.F., 2005: The 13-14 December 2001 IMPROVE-2 Event. Part I: Synoptic and Mesoscale Evolution and Comparison with a Mesoscale Model Simulation. *J. of Atm. S.*
- Medina, S., Sukovich, E., and Houze, R.A., 2007: Vertical Structures in Cyclones Crossing the Oregon Cascades. *Mon. Wea. Rev.*, 135, 3365–3586.
- Raymond, W. H., 1994: Diffusion and Numerical Filters. *Mon. Wea. Rev.*, 122, 757–761.
- Raymond, W.H., 2000: Diffusion and Numerical Filters. *J. of App. Met.*, 39, 2397–2408.
- Skamarock, W.C., 2006: Positive-Definite and Monotonic Limiters for Unrestricted-Time-Step Transport Schemes. *Mon. Wea. Rev.*
- Skamarock, W.C., and Weisman, M.L., 2008: The Impact of Positive-Definite Moisture Transport on NWP Precipitation Forecasts. Submitted: *Mon. Wea. Rev.*
- Weisman, M., Wang, X., Skamarock, W., & Klemp, J., 2007: Experiences with Realtime 3 km Explicit Convective Forecasts with WRF-ARW During the Spring 2007 Season. 8th Annual WRF User's Workshop Presentation.