

Community Hurricane WRF: support by the DTC

L. Bernardet^{1,3}, S. Bao^{1,3}, D. Stark², C. Harrop^{1,3}, L. Carson²

¹NOAA Earth System Research Laboratory

²National Center for Atmospheric Research

³CIRES, University of Colorado

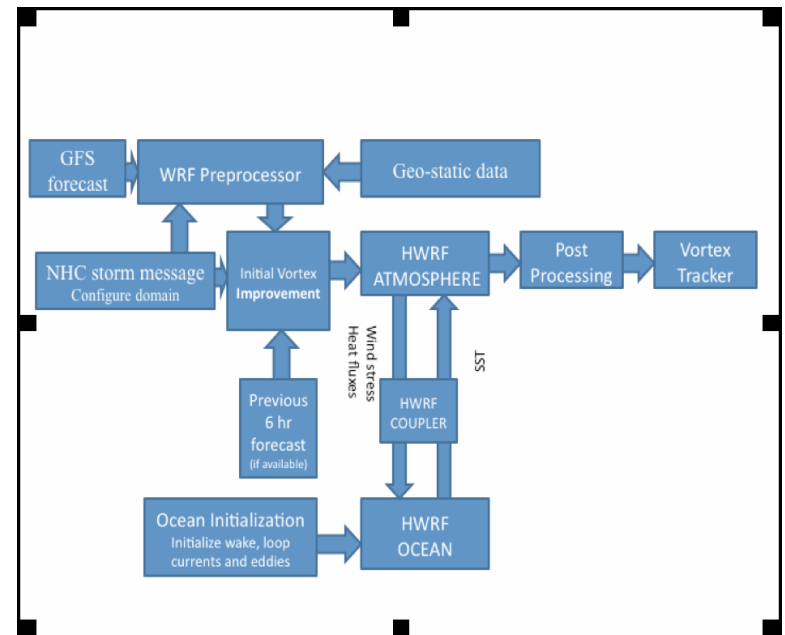
With invaluable contributions from URI and NOAA NCEP, AOML and GFDL



Developmental Testbed Center

Community HWRF Components

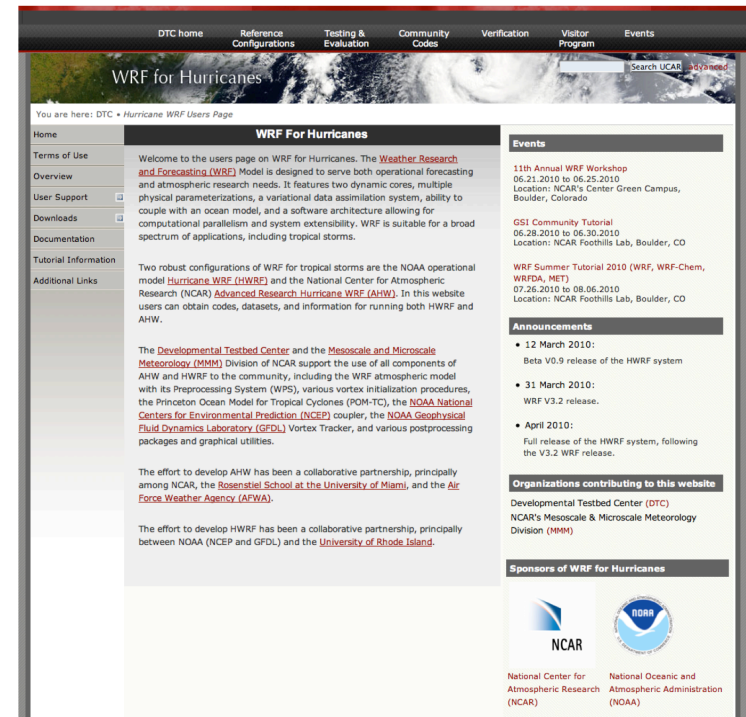
- WRF v3.2 atmospheric model (includes operational HWRF physics, dynamics and vortex-following moving nest)
- NCEP Vortex Initialization package with cycling capability
- Ocean: POM-TC
- URI ocean initialization
- NCEP coupler
- GFDL Vortex Tracker



Community HWRF Support

- Web Portal at DTCenter.org/HurrWRF/users
- Code management and releases
- Technical and Scientific Documentation
- Test datasets
- Helpdesk (wrfhelp@ucar.edu)
- Tutorial (February 2010)

AHW also available
from this Portal



Developmental Testbed Center

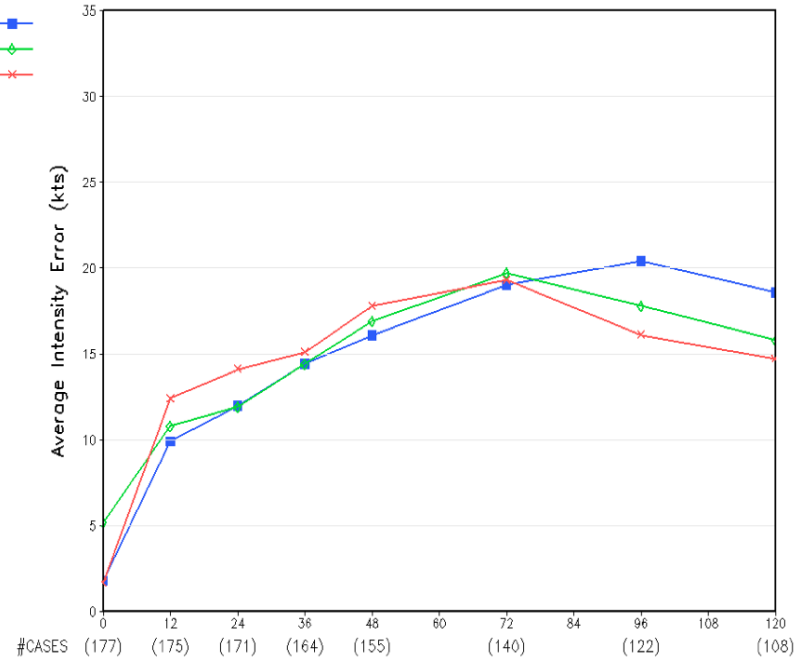
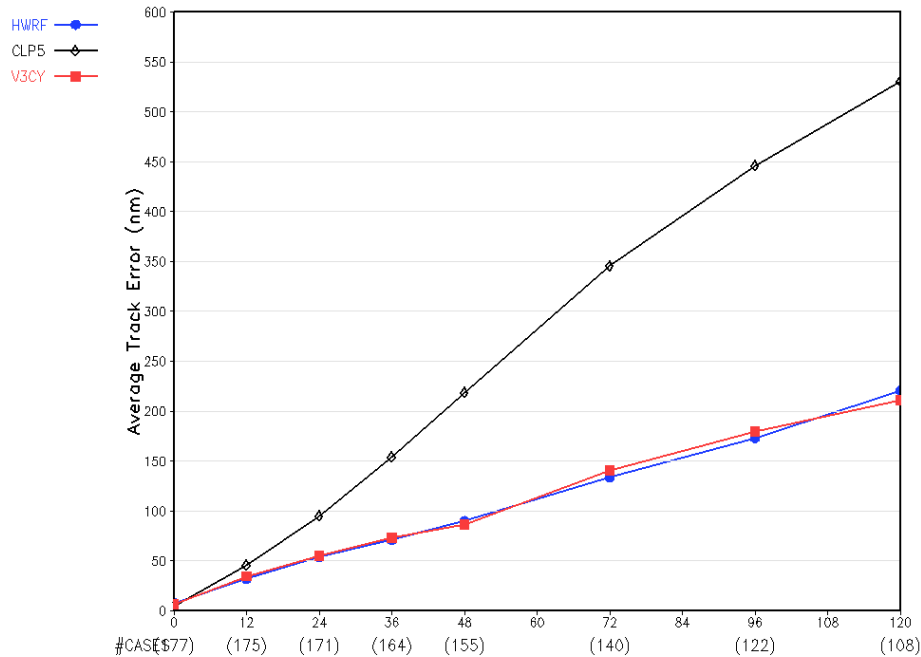
Community vs operational HWRF

	Pre-proc	GSI	WRF	Non-WRF	Initial Data
Operational	SI	Yes	2.0	Original	Spectral GFS with 64 levels
Community	WPS	No	3.2	Modified	Isobaric GFS with 27 levels

- Pending testing, NCEP will adopt Community HWRF for 2011 season
- Having a single code for research and operations will facilitate transfer of new developments to NCEP



Skill of Community HWRF



- 177 cases on 2008 storms on Atlantic Basin run on NCEP IBM
- Track skill similar to operational; intensity degraded
- More recent tests showed that skill is comparable when GSI is employed

