



WRF Downscaling: “Choosing the Best Grid-Resolution and Model Configuration for Explicit Forecasts of Precipitation”

Barry Lynn, Ruby Leung, Alexander Khain, Daniel  
Rosenfeld, Guy Kelman, and Amir Givati

June 23, 2011

# Compare WRF Forecasts for Twelve (30 hr) Case Study Days in 2010-11

Model Simulations with WSM6

1.3 km Grid Resolution

4 km Grid Resolution

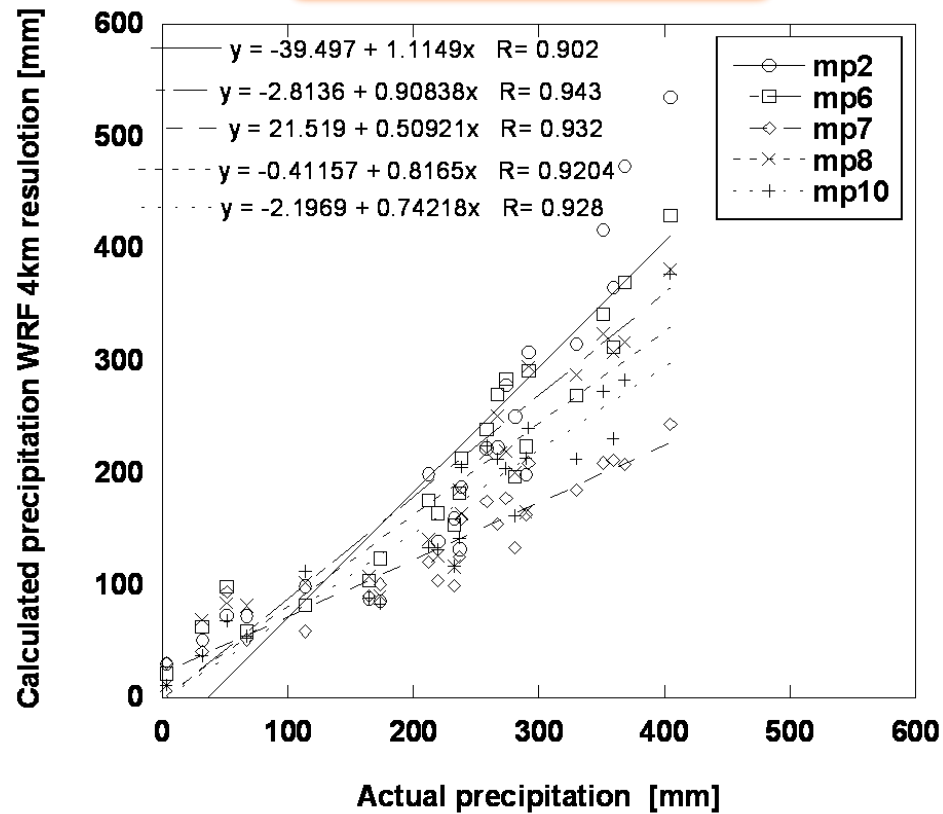
1.3 km Grid Res. GEFS Ensemble

4 km Grid Res. GEFS Ensemble

1.3 km Grid Res. With SBM (with  
polluted cities)

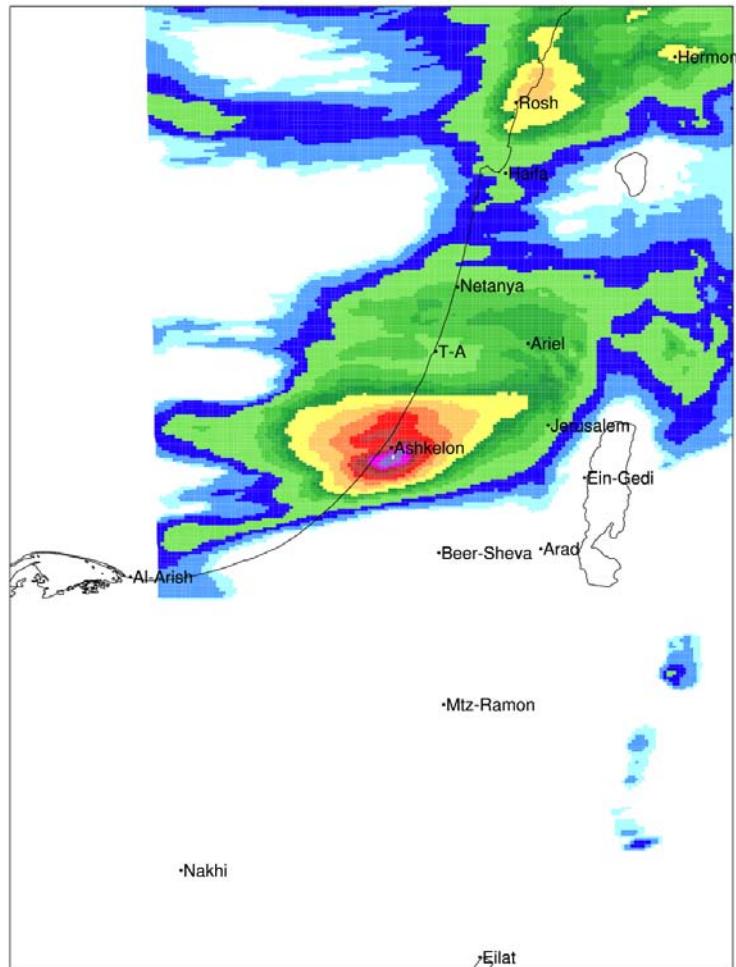
Which Configuration Has Better Precipitation Skill?

Over Several Storms  
WSM6 Was The Best!

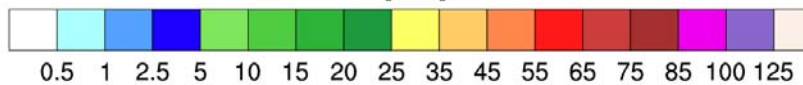


# 1.3 km Ensemble Forecast (Left) Versus 4 km Ensemble Forecast (Right)

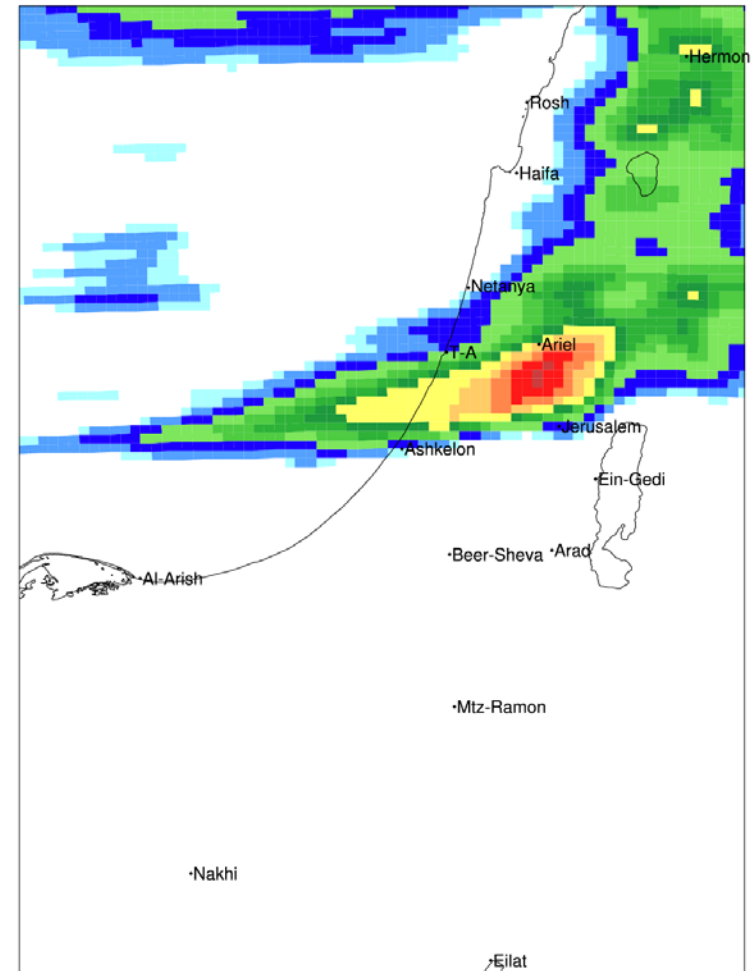
Ensemble\_Best\_Pr  
iss:2010-12-11\_00:00  
eff:2010-12-12\_18:00



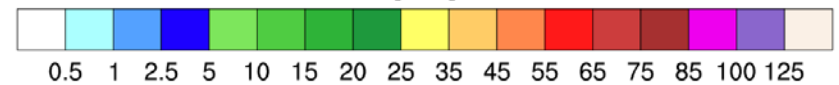
[mm]



Ensemble\_Best\_Pr  
iss:2010-12-11\_00:00  
eff:2010-12-12\_18:00



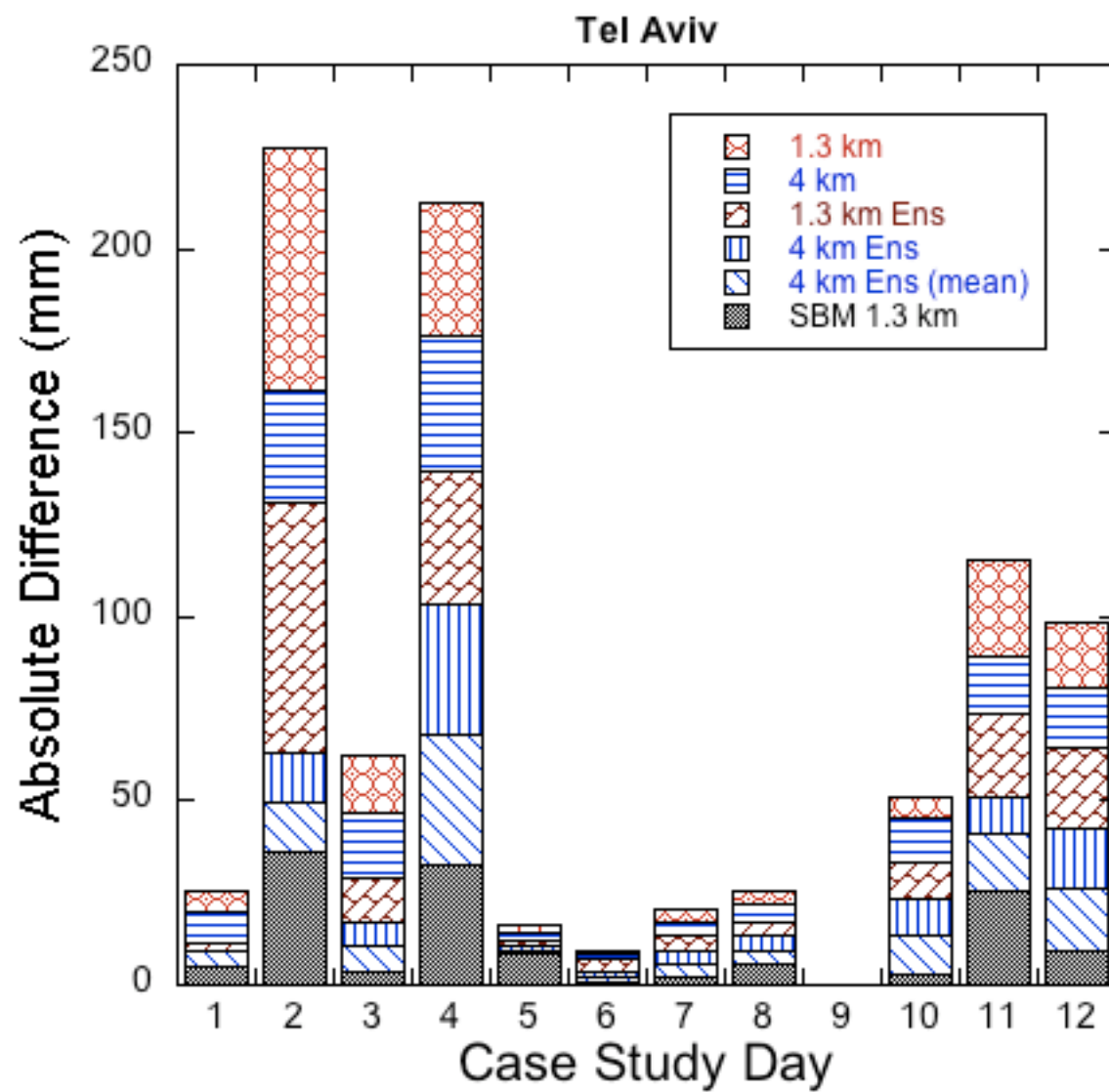
[mm]

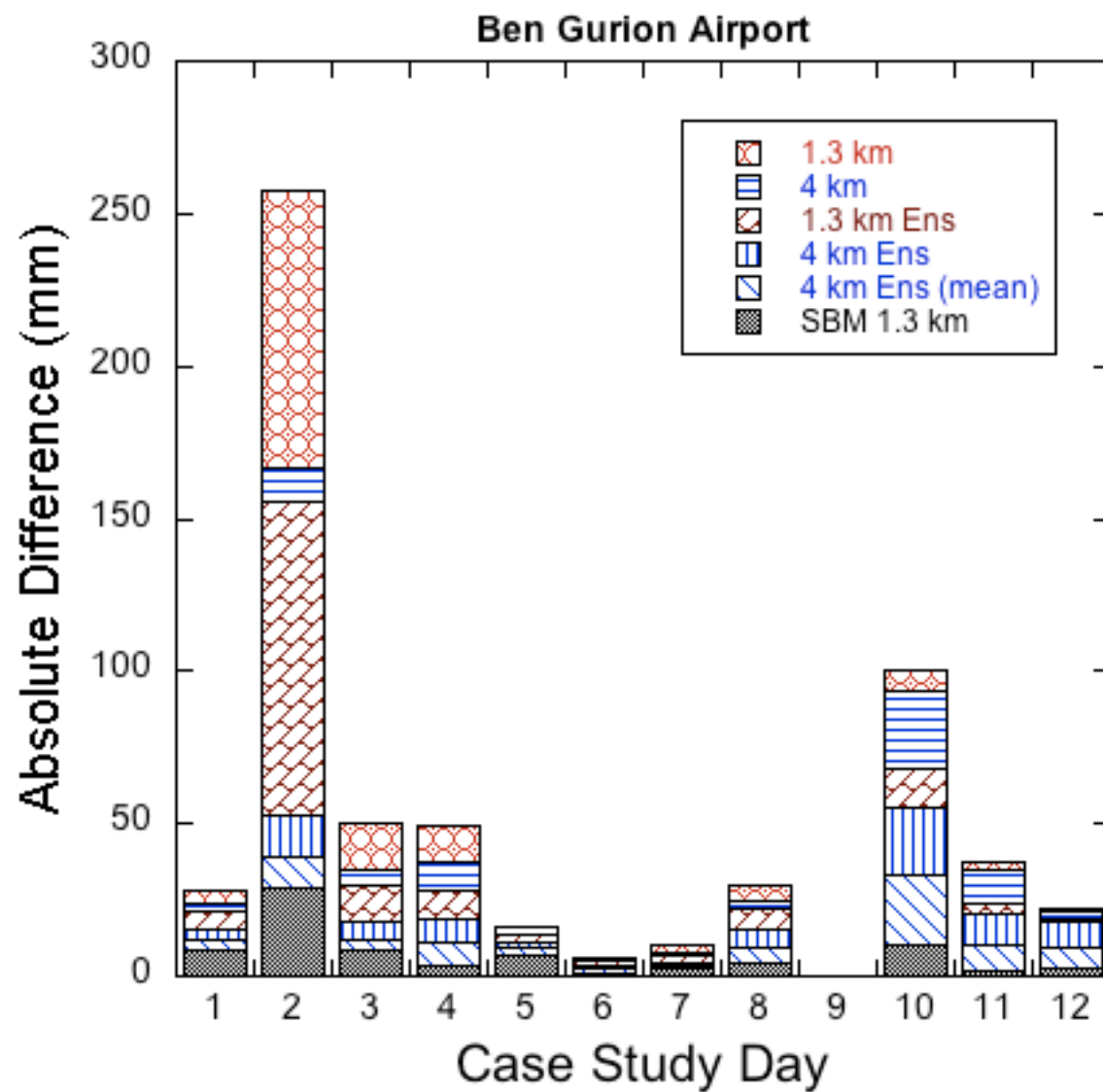


Two Ensembles: Different Forecasts

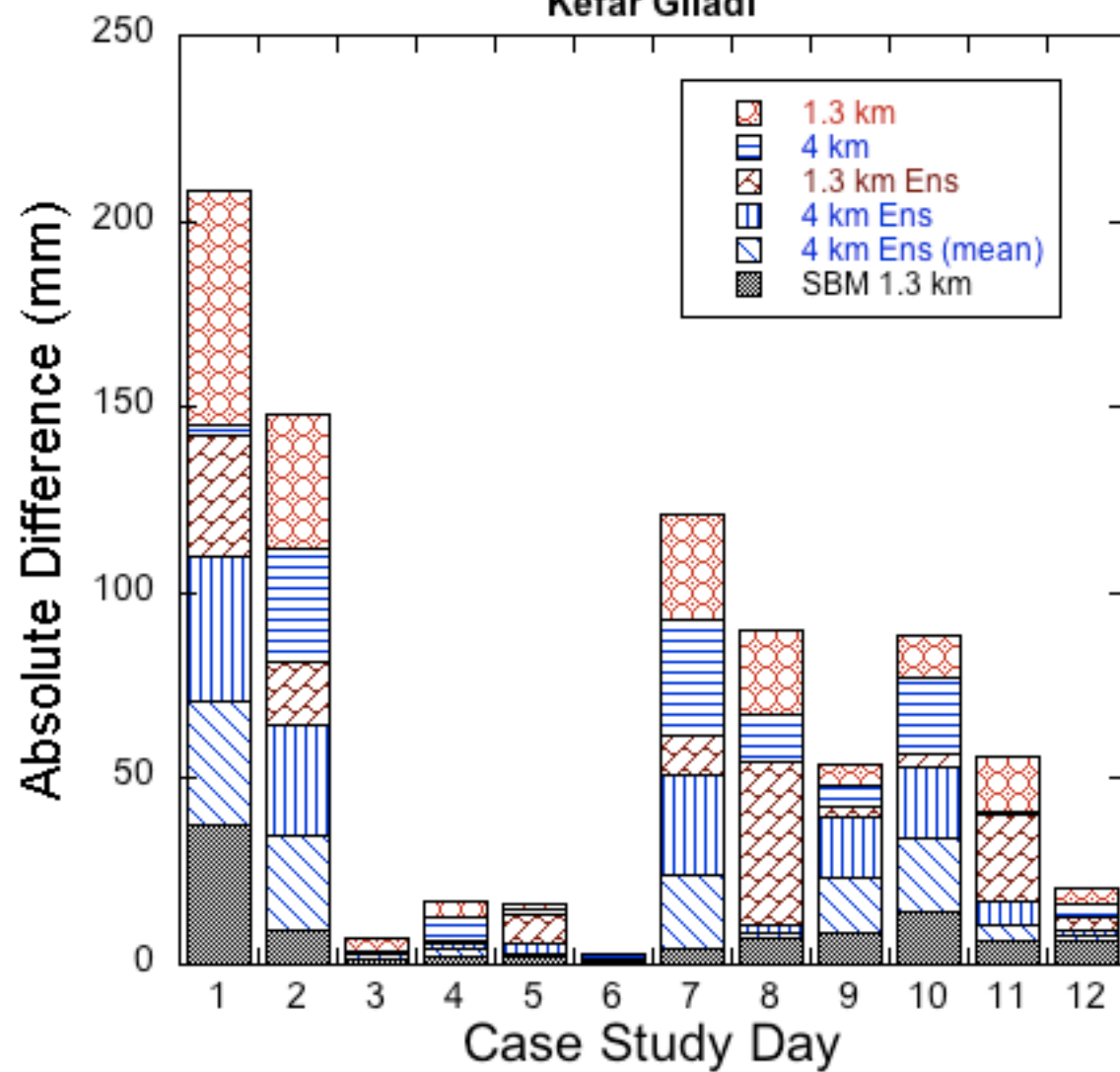
# Station Comparison

- Hermon (Northern Mountain Area)
- Kefar Giladi (Northern Hills)
- Tel-Aviv (Coastal City)
- Ben-Gurion Airport (Inland Plain)

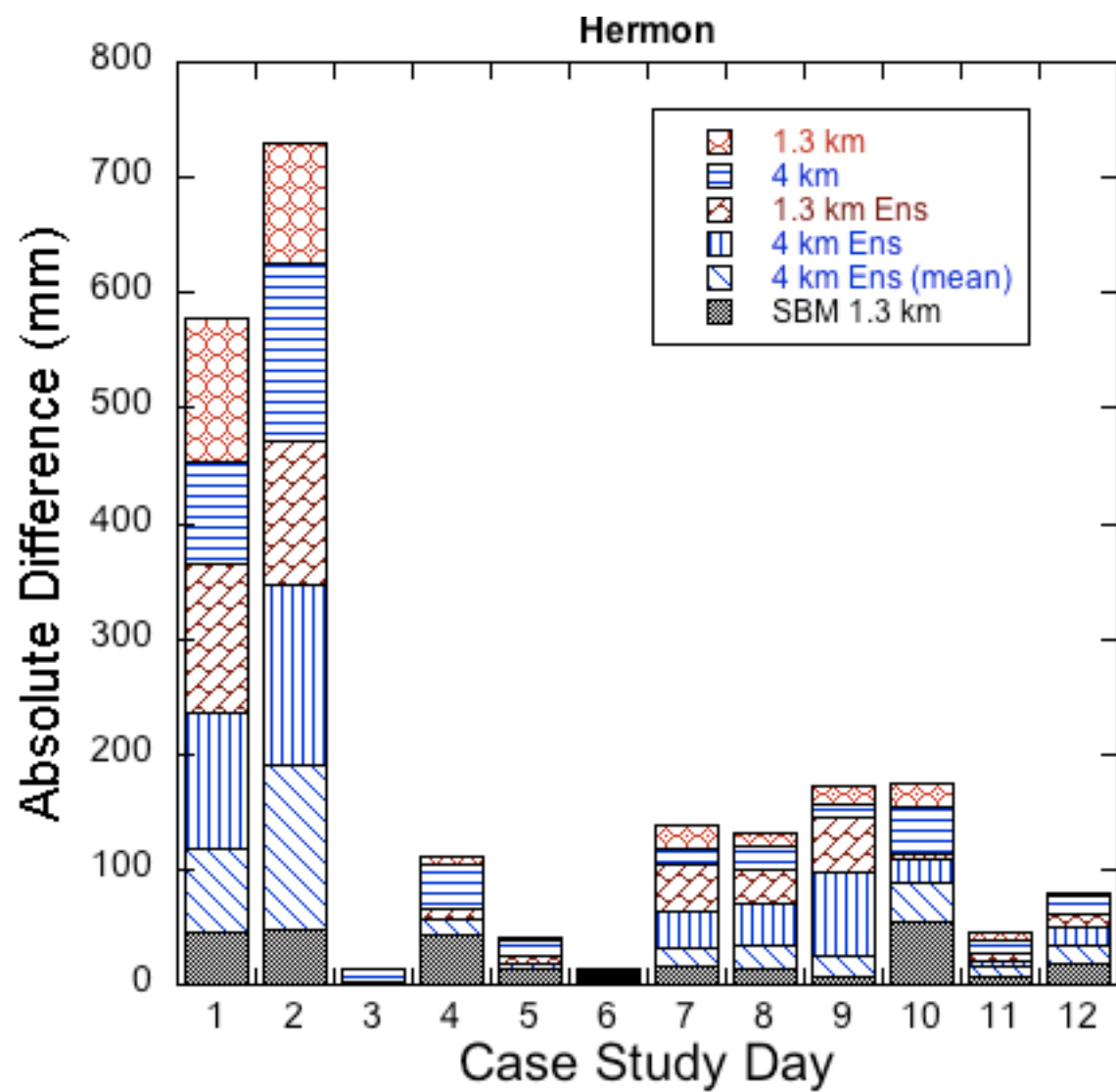


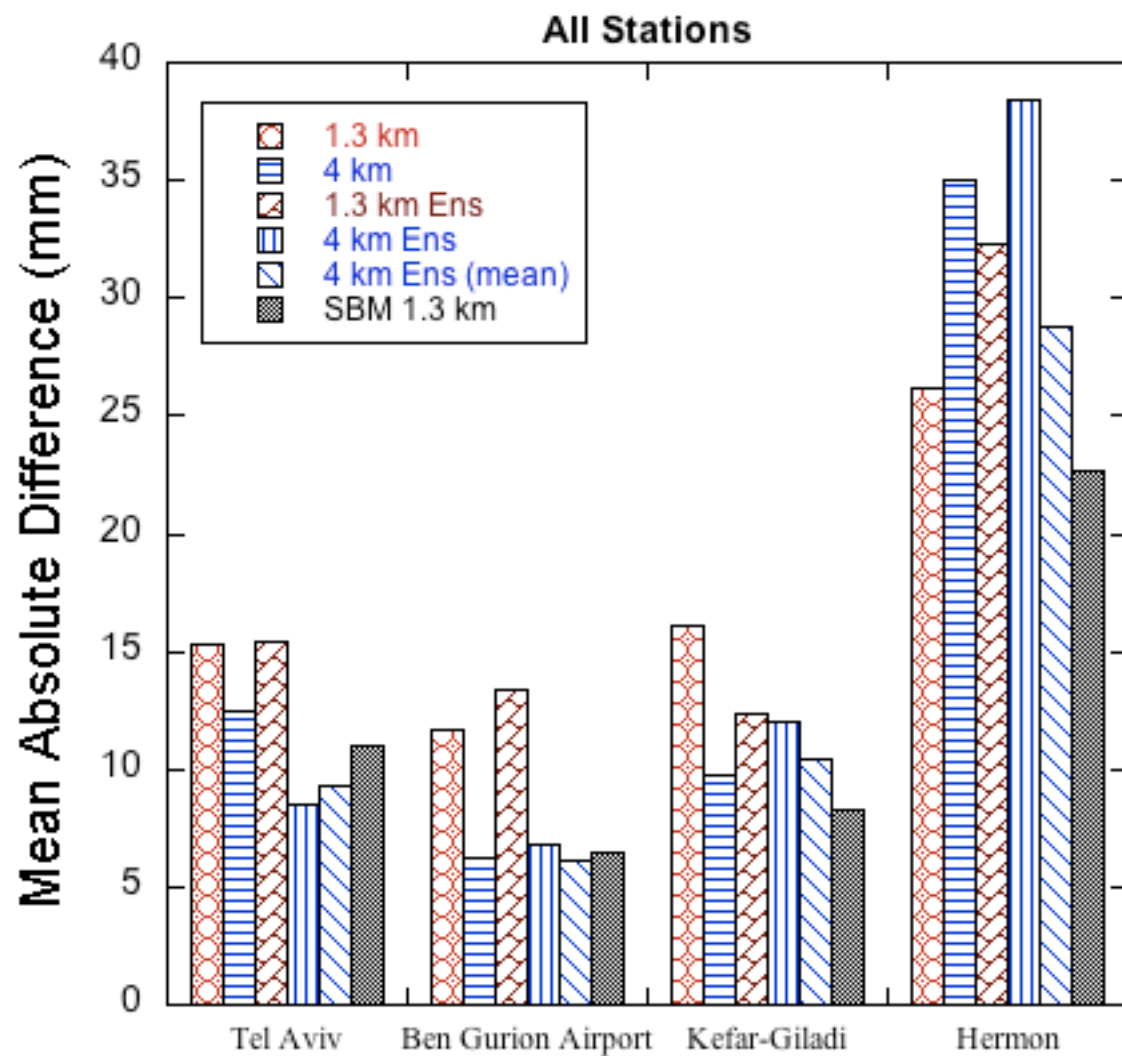


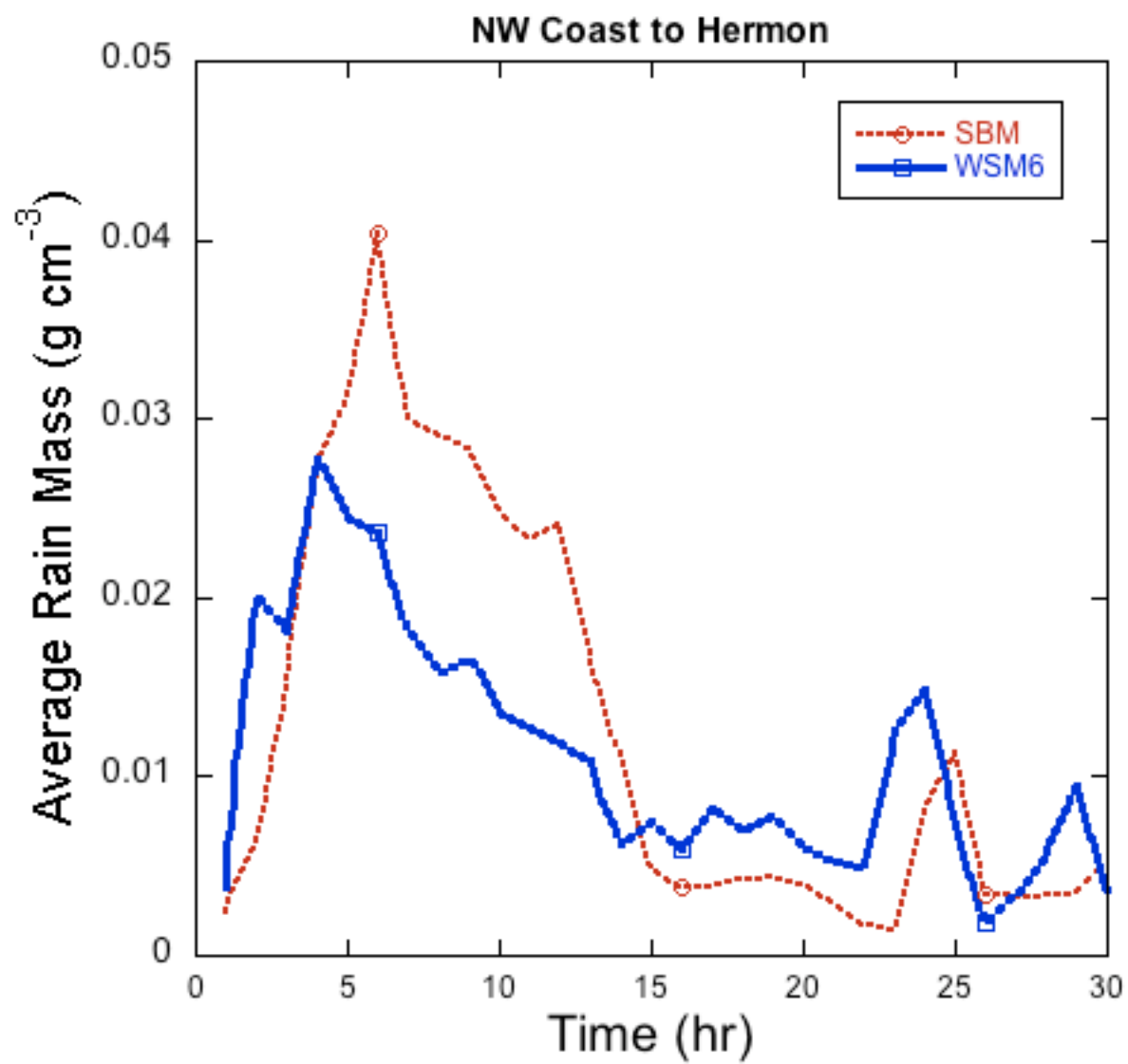
# Kefar Giladi

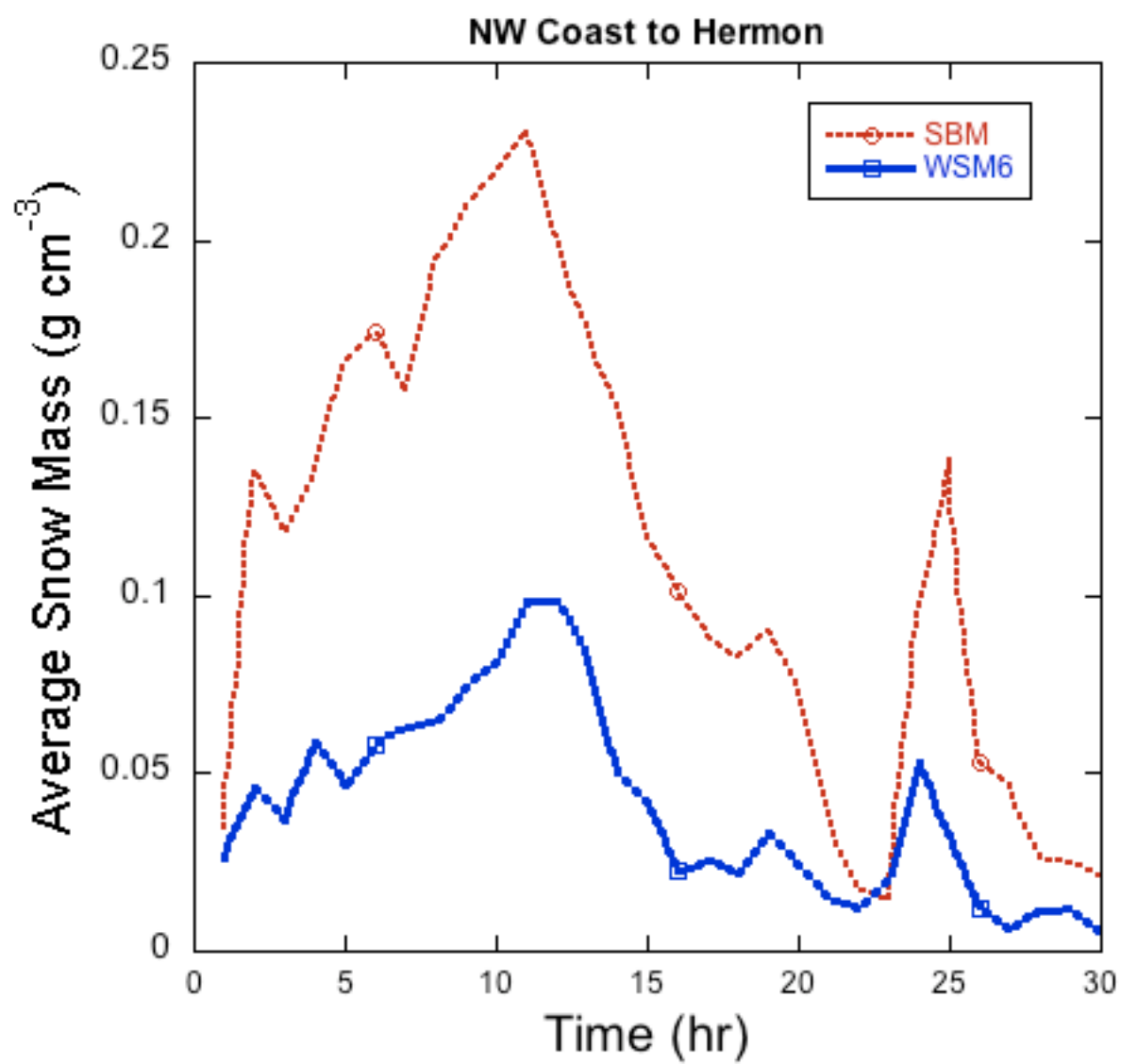






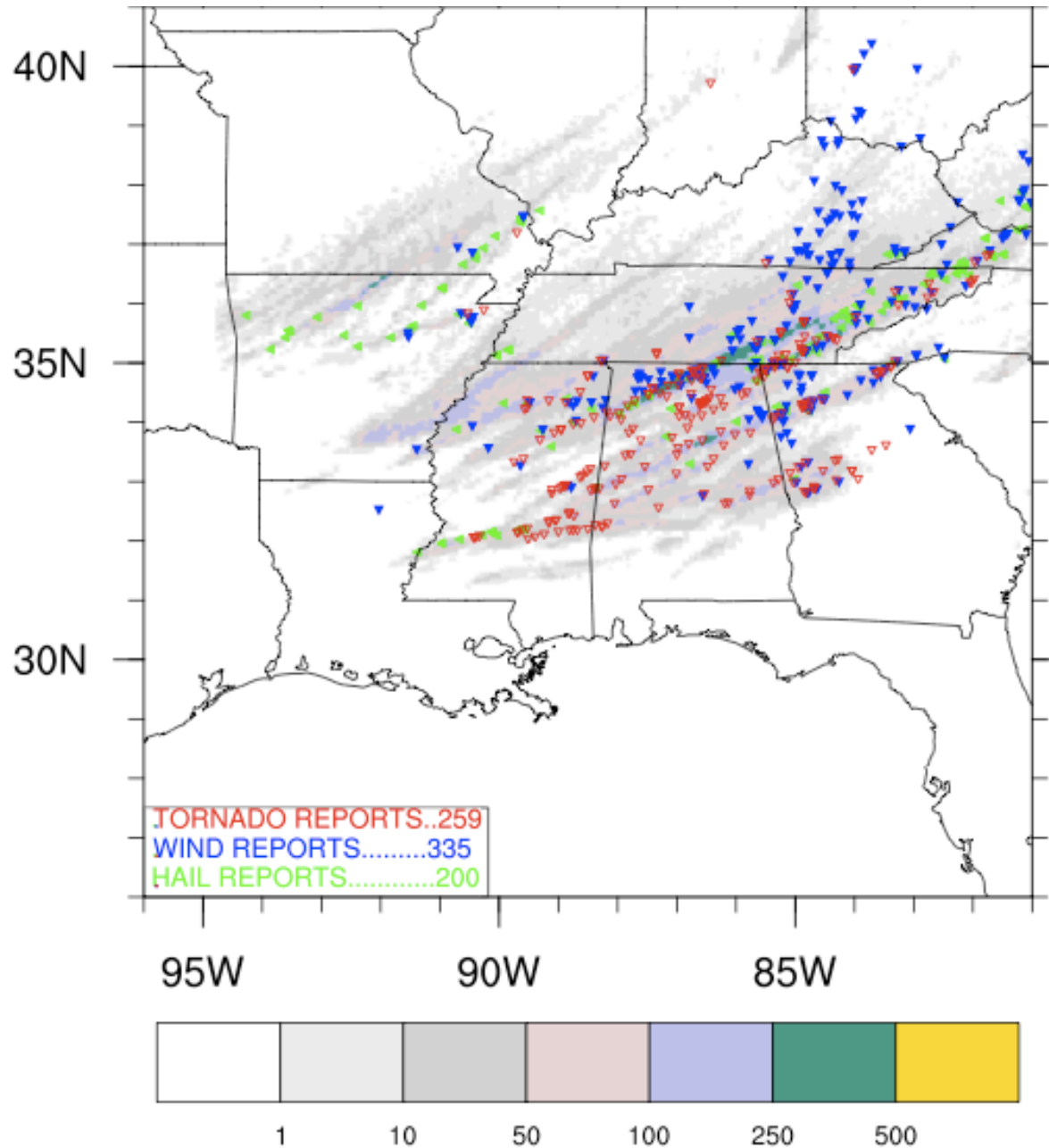






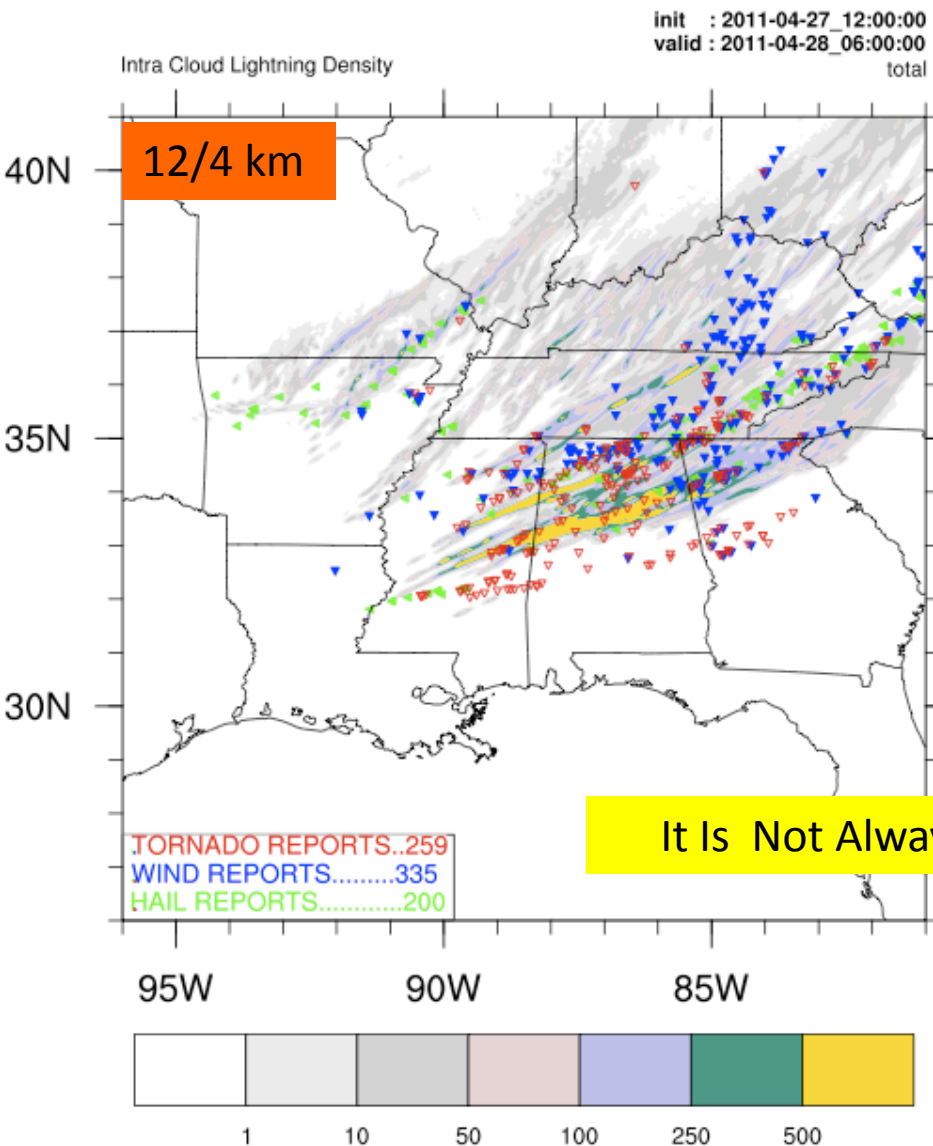
# EarthNetworks Intra-Cloud Lightning Network Obs.

USE  
LIGHTNING  
TO  
EVALUATE  
MODEL  
FORECASTS

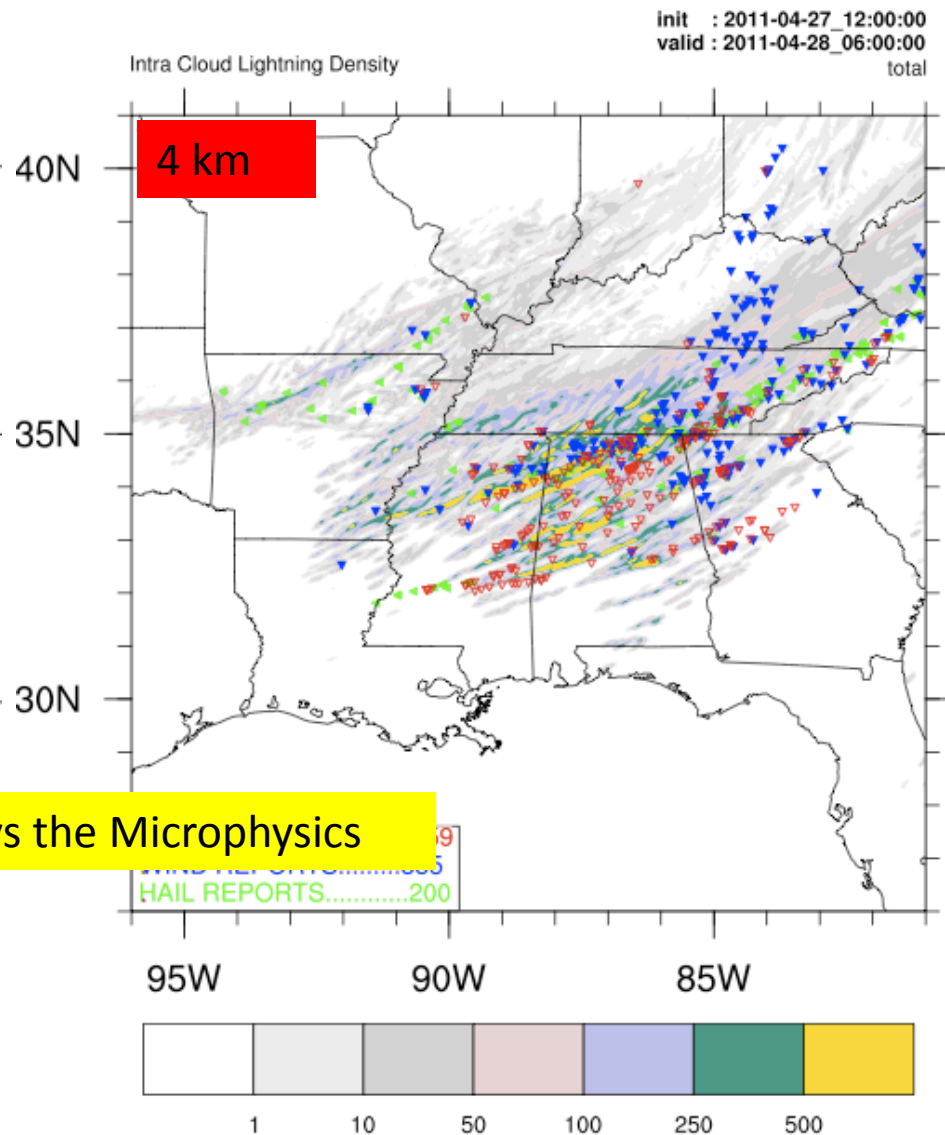


# Tuscaloosa Tornado Event – Our Lightning Forecast

## GFS Initial Conditions

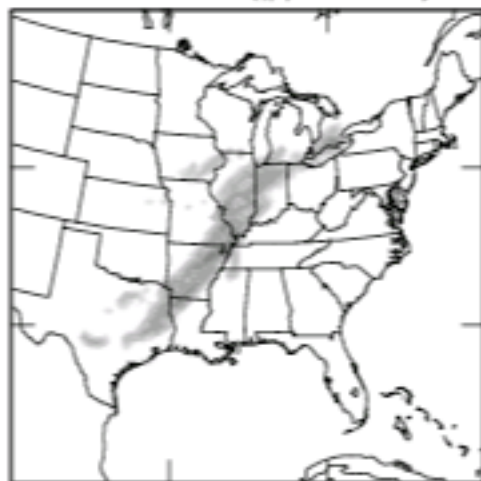


## RUC2 Initial Conditions

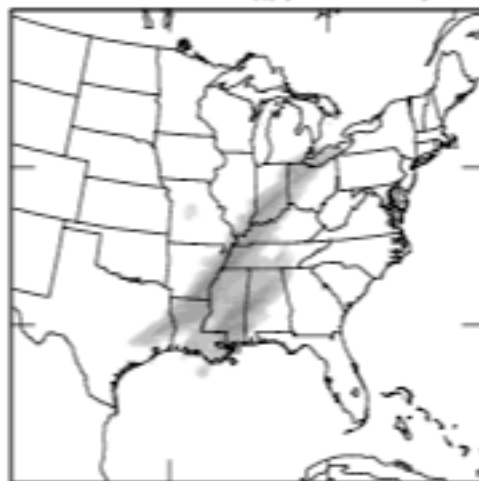


WSI NLDN

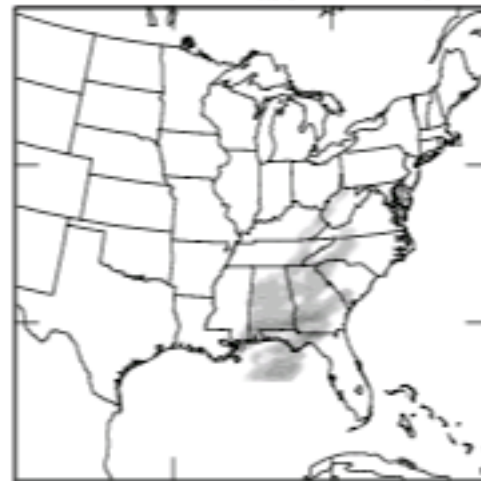
April 8  
Hour = 0  
Obs -CG (#/12 hr)



April 8  
Hour = 12  
Obs -CG (#/12 hr)

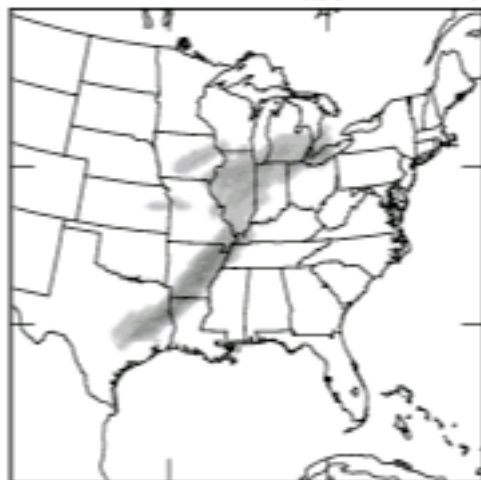


April 9  
Hour = 0  
Obs -CG (#/12 hr)

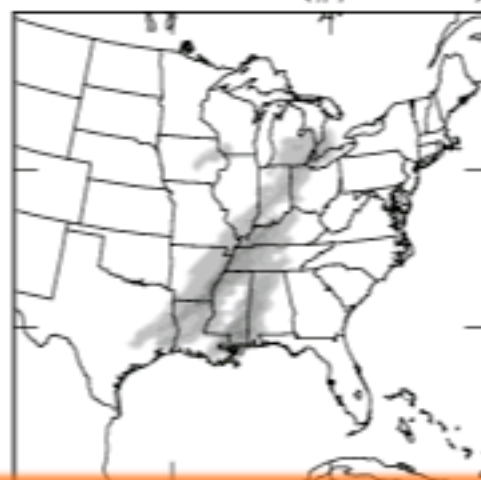


OUR FORECAST

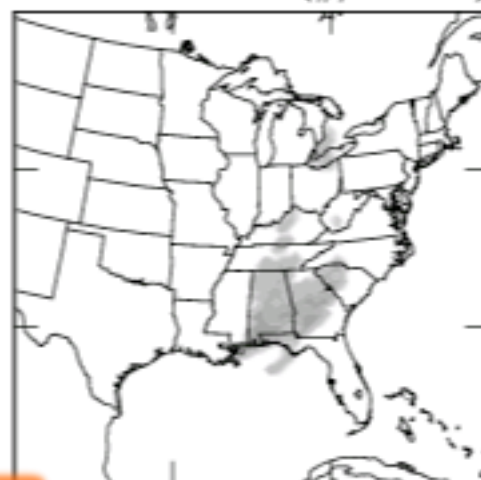
Forecast -CG (#/12 hr)



Forecast -CG (#/12 hr)



Forecast -CG (#/12 hr)



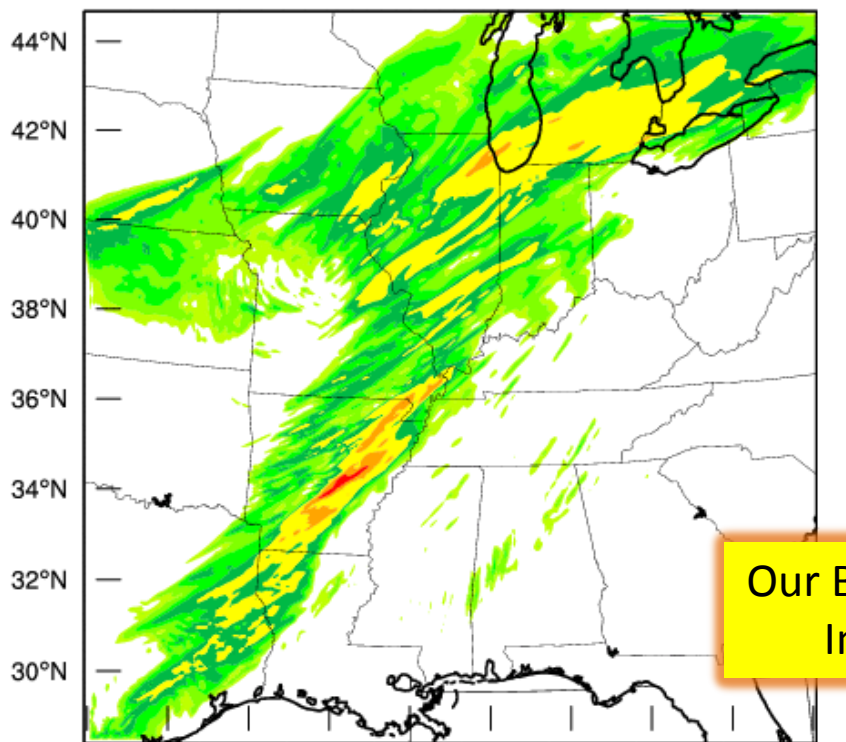
Real World Consequences



WRF Forecast

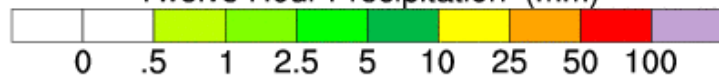
Init: 2010-04-07\_12:00:00  
Valid: 2010-04-08\_00:00:00

Twelve Hour Precipitation (mm) SBM (4 km)



98°W 96°W 94°W 92°W 90°W 88°W 86°W 84°W 82°W 80°W

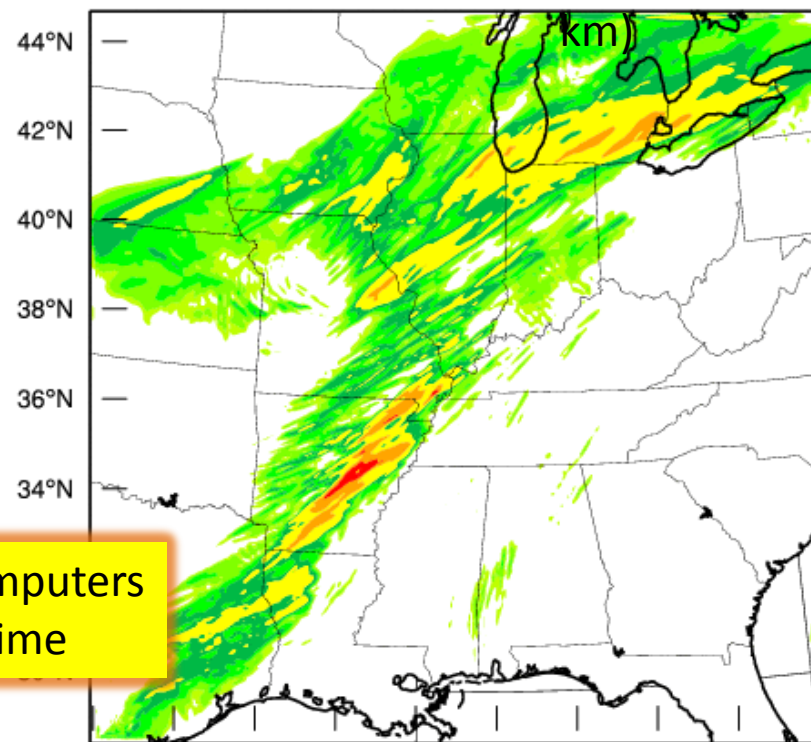
Twelve Hour Precipitation (mm)



WRF Forecast

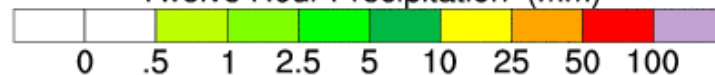
Init: 2010-04-07\_12:00:00  
Valid: 2010-04-08\_00:00:00

Twelve Hour Precipitation (mm) WSM6 (4 km)



98°W 96°W 94°W 92°W 90°W 88°W 86°W 84°W 82°W 80°W

Twelve Hour Precipitation (mm)



Our Best Computers  
In Real Time