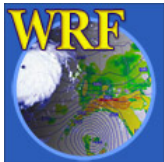


# 18<sup>th</sup> WRF Users Workshop

# *Welcome!*

177 Registered Participants (19 countries)  
~ 57 First timers!

13 -16 June 2017  
Boulder, Colorado



# WRF User Participation

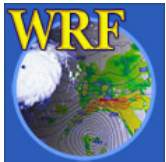
- Past 5 year statistics:
  - 20,900 new registered users
  - 5,000 new U.S. users
  - 261 different U.S. universities
  - 145 different U.S. govt./nonprofit institutions
- Registered Users: 39,180
- Active subscribers to [wrf-news@ucar.edu](mailto:wrf-news@ucar.edu) : ~ 8,000



Currently averaging 350 email inquiries per month to [wrfhelp](mailto:wrfhelp)

# Some Aspects of Workshop Format

- Monday afternoon (yesterday) lecture series
  - Ensemble forecasting
  - Will cover other topics in future workshops (suggestions welcome)
- Combination of plenary and one parallel session (59 oral presentations\*)
- Poster session tomorrow afternoon using the full CG auditorium
  - 70 poster presentations
  - Posters will only be viewable during poster session
- Two discussion sessions:
  - Tuesday: WRF physics suites
  - Thursday: Model unification issues
- Social “Information Exchange” this afternoon here on the CG Plaza
- Workshop group photo in Atrium following morning session tomorrow
- All abstracts are posted in the online agenda ([WRF-model.org](http://WRF-model.org))



\* <12 min presentation, >3 min discussion; Please keep on schedule!

# 18<sup>th</sup> WRF Users Workshop Agenda

<b>MONDAY – JUNE 12, 2017 (Lecture Series)</b>			
<b>Pre-Registration 12:30 – 01:30</b>			
Ensemble Forecasting <b>1:30 – 5:00</b>			
<b>TUESDAY – JUNE 13, 2017</b>	<b>WEDNESDAY – JUNE 14, 2017</b>	<b>THURSDAY – JUNE 15, 2017</b>	
<b>Registration and Coffee</b> <i>Registration between 07:30 – 8:30</i>	<b>Coffee</b>	<b>Coffee</b>	
<b>Plenary</b> Session 1: WRF Modeling System Development Updates <b>08:40 – 10:00</b>	<b>Plenary</b> Session 5: Application in Regional Climate Modeling <b>08:30 – 10:00</b>	<b>South Room</b> Parallel Session 7A: Development and Testing of WRF-Chem <b>08:30 – 10:00</b>	<b>Center Room</b> Parallel Session 7B: Development and Testing of WRFDA <b>08:30 – 10:00</b>
<b>Coffee Break 10:00 – 10:30</b>	<b>Coffee Break 10:00 – 10:30</b>	<b>Coffee Break 10:00 – 10:30</b>	
<b>Plenary</b> Session 2: Other Status Reports <b>10:30 – 12:15</b>	<b>Plenary</b> Session 6: Evaluation of Moist Model Physics <b>10:30 – 12:00</b> <b>12:00 - Group photo</b>	<b>Plenary</b> Session 8: Evaluation of Model Performances <b>10:30 – 12:15</b>	
<b>Lunch Break 12:15 – 01:30</b> wrfhelp desk in CG1 Atrium from 12:45 – 1:30	<b>Lunch Break 12:00 – 02:00</b> wrfhelp desk in CG1 Atrium from 12:30 – 2:00	<b>Lunch Break 12:15 to 01:30</b> wrfhelp desk in CG1 Atrium from 12:45 – 1:30	
<b>Plenary</b> Session 3: Ensemble Forecasting <b>01:30 – 02:30</b>	<b>Poster Set-up 01:45 – 02:00</b>	<b>Plenary</b> Session 9: Model for Prediction Across Scales <b>01:30 – 03:00</b>	
<b>Coffee Break 02:30 – 03:00</b>	<b>Poster Session 02:00 – 05:00</b>	<b>Coffee Break 03:00 – 03:30</b>	
<b>Plenary</b> Session 4: Evaluation of PBL and Surface Physics <b>03:00 – 04:30</b>	<b>Odd-numbered posters: 02:00 – 03:30</b> <b>Even-numbered posters: 03:30 – 05:00</b>  (with refreshments)	<b>Plenary</b> Discussion on Model Unification Issues, Wrap-up <b>03:30 – 04:30</b>	
<b>Plenary Discussion on Physics Suites 04:30 – 05:30</b>	<b>Poster Removal 05:00 – 05:30</b>		
<b>Information Exchange 05:30 – 07:00</b>			

Friday, 16 June 2017

## WRF Related Instructional Sessions

- 08:30 – 10:00
  - NCAR Command Language (NCL)
  - Visualization and Analysis Package (VAPOR)
  - WRF - Hydro
- 8:30 – 12:00
  - MPAS for WRF users
- 10:30 – 12:00
  - WRF - Python

Online survey questionnaire will be sent out following workshop. Please respond, your feedback is important for future workshop planning!

