

# Impact of resolution on the representation of polar lows in the Weather Research and Forecasting Model

Marta Moreno Ibáñez<sup>1,2</sup>, John J. Cassano<sup>1,2,3</sup>, Mark Seefeldt<sup>1,2</sup>, Amy Solomon<sup>1,4</sup>

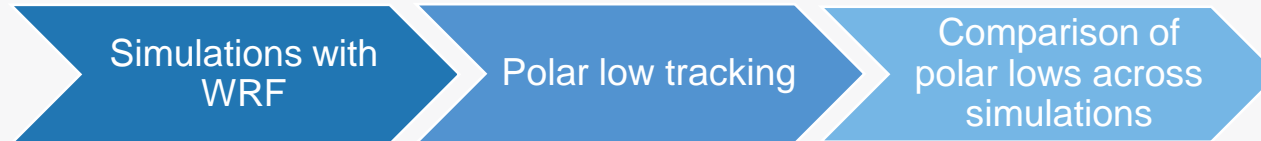
<sup>1</sup> Cooperative Institute for Research in Environmental Sciences, University of Colorado Boulder

<sup>2</sup> National Snow and Ice Data Center, University of Colorado Boulder

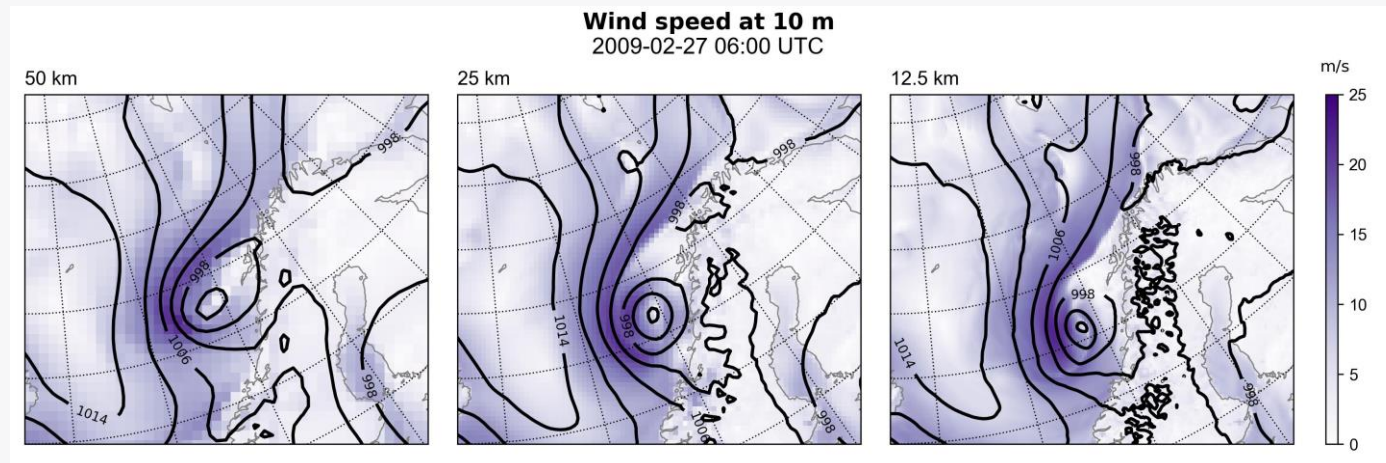
<sup>3</sup> Department of Atmospheric and Oceanic Sciences, University of Colorado Boulder

<sup>4</sup> NOAA Earth System Research Laboratory / Physical Sciences Laboratory

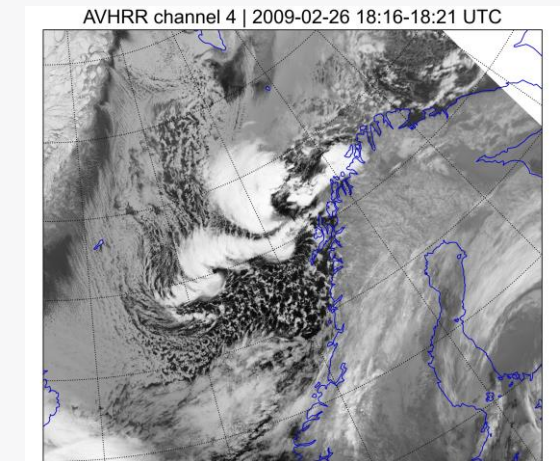
- Methods



- Results



Polar low



The polar low is weaker in the 50-km grid simulation compared to the higher-resolution simulations

